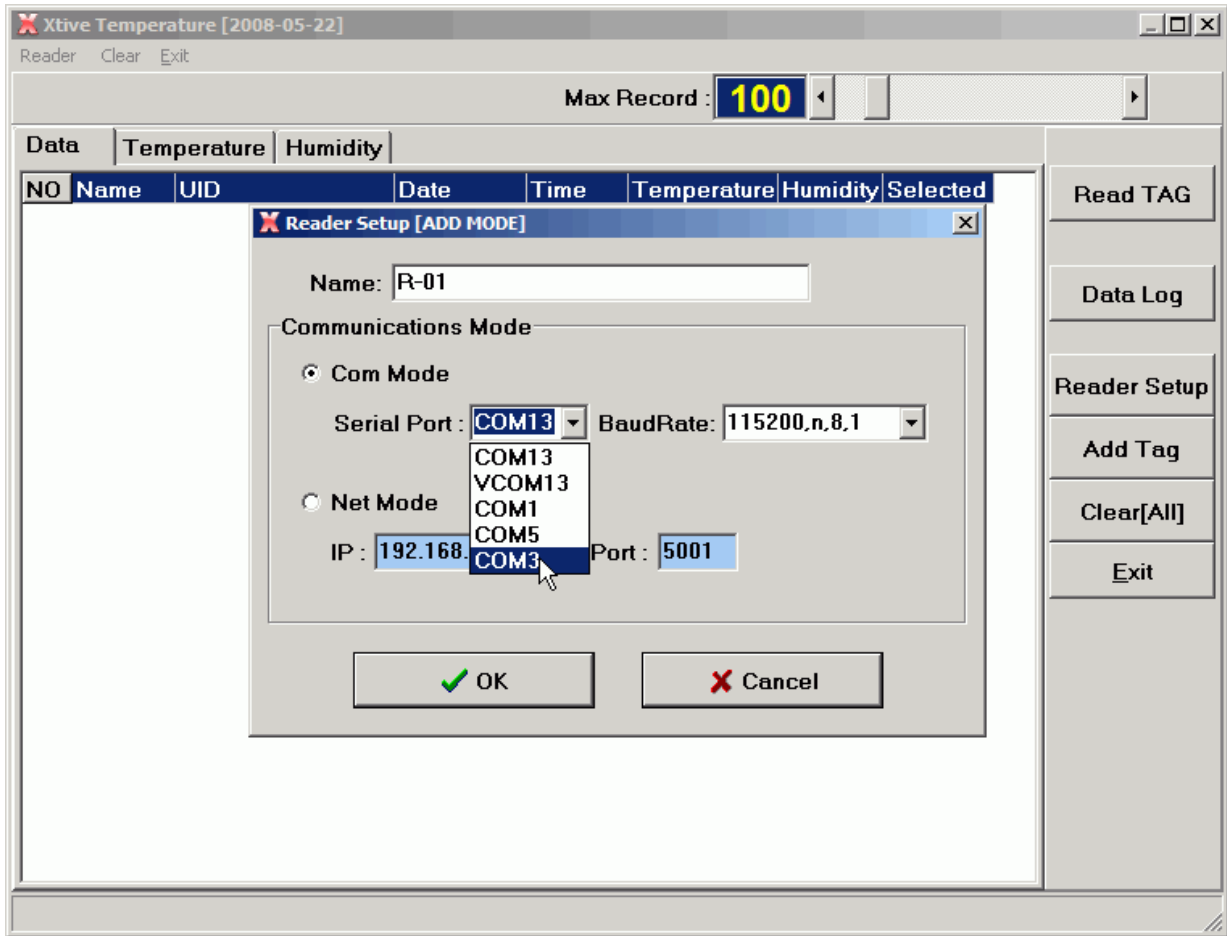


Xtive Temperature User Manual

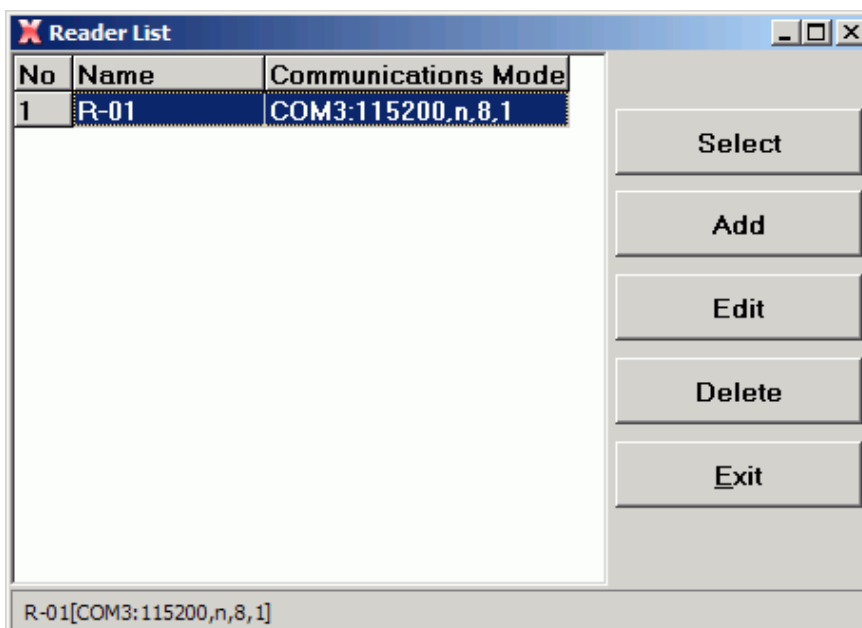


Version 1.00
2009/06/16

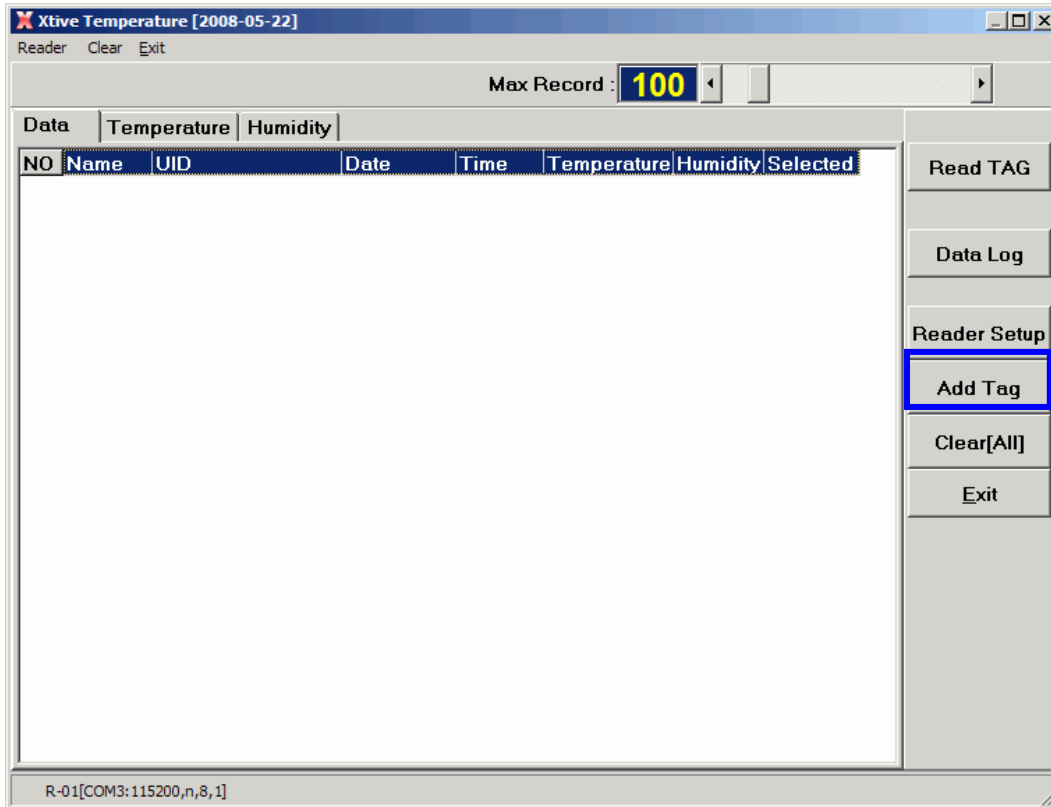
1. Xtive Temperature program support two operating mode: Real COM mode (COM)and TCP server mode(NET).



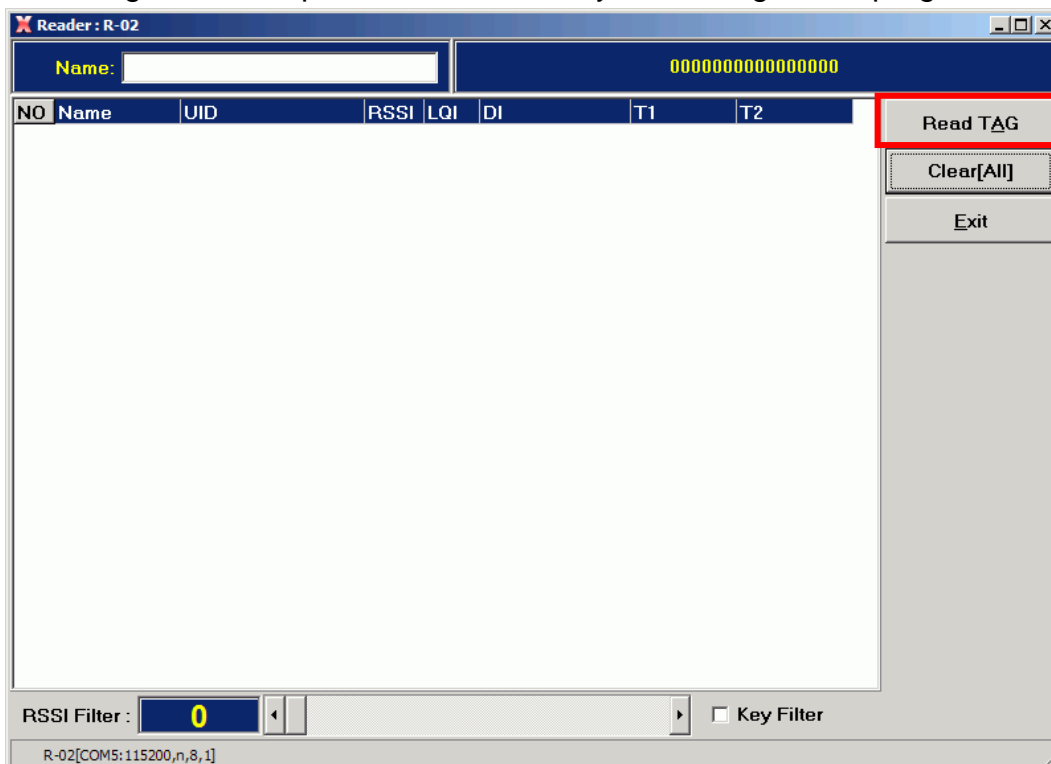
2. Set up correct reader operating mode and select it to read tag.



3. Xtive Temperature program only support to read tag which have temperature and humidity sensor.
4. Add tag to this program.

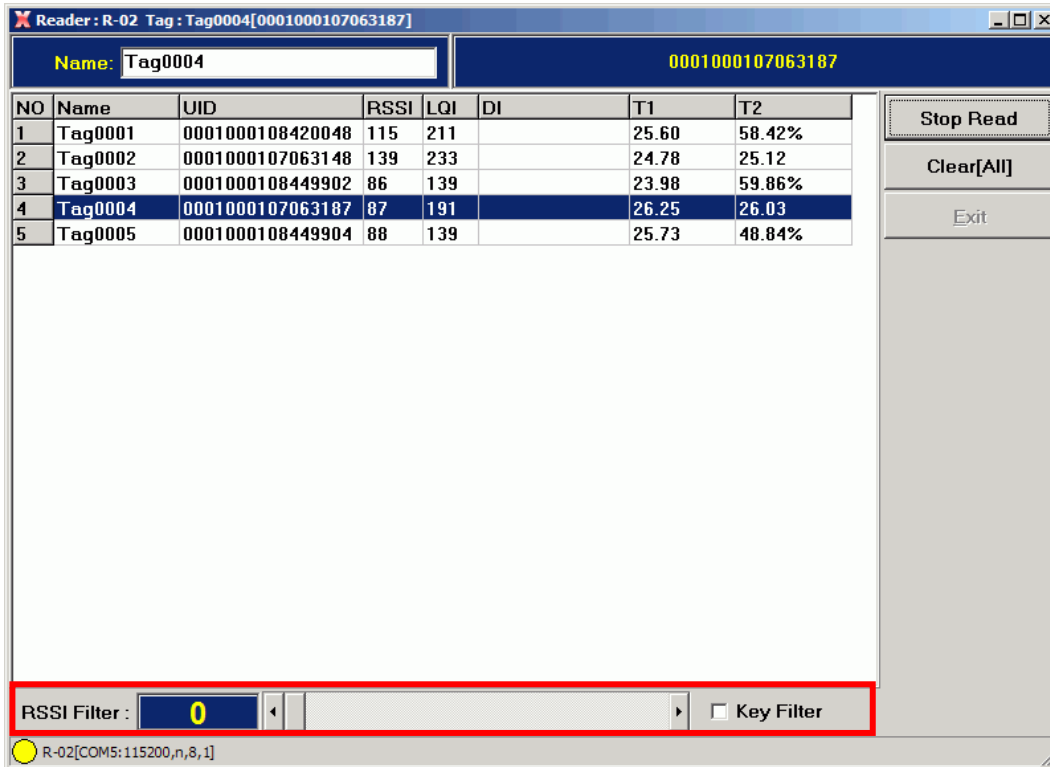


5. Read Tag to add temperature and humidity sensor tag to this program.

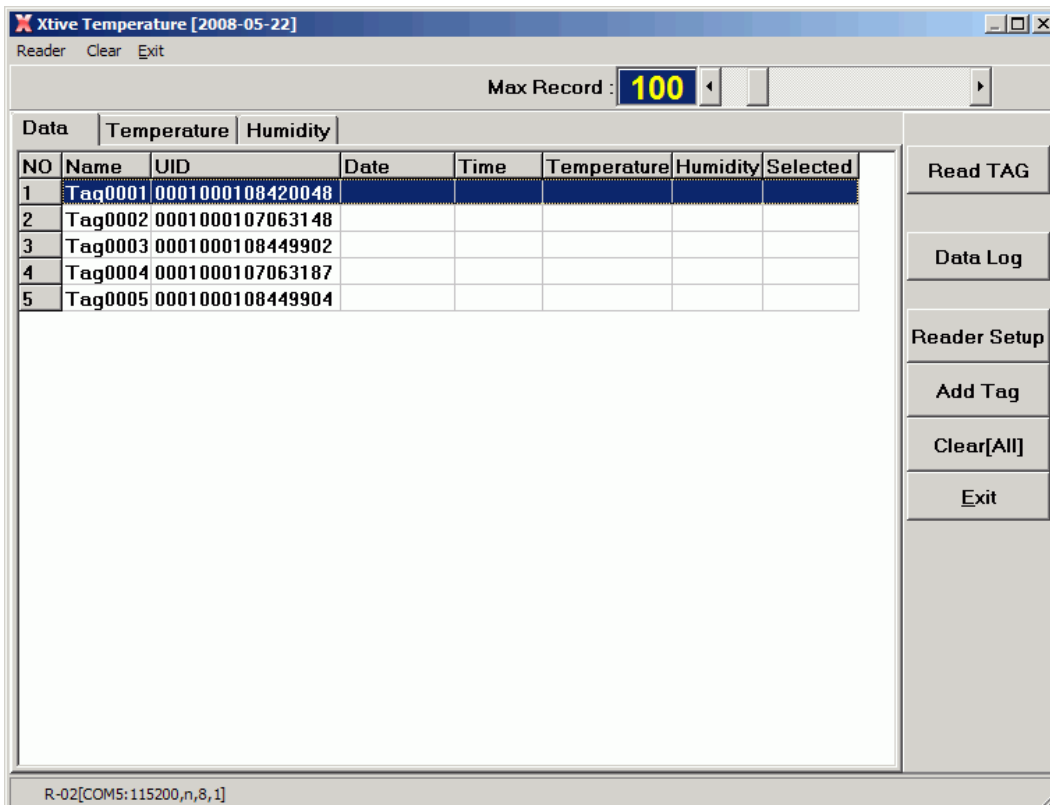


- RSSI filter: Adjust RSSI filter (0~255) to reject TAG which have low RSSI signal in this program.

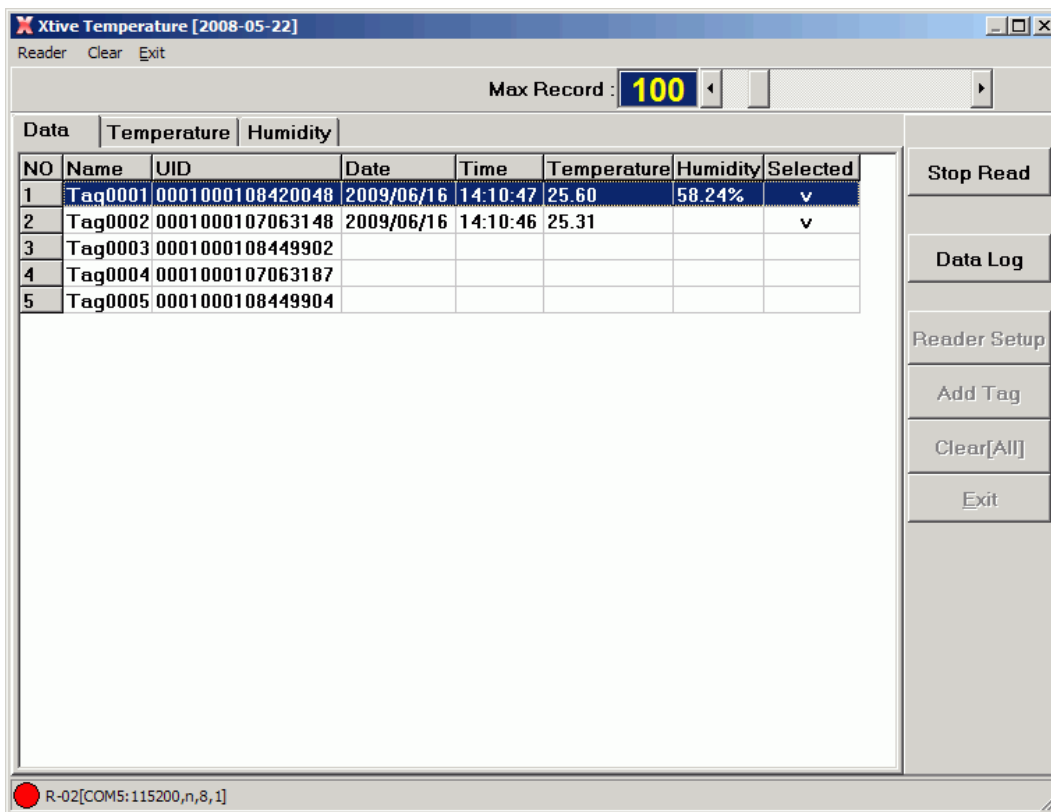
Key filter: Select check box to read TAG which have press button in this program.



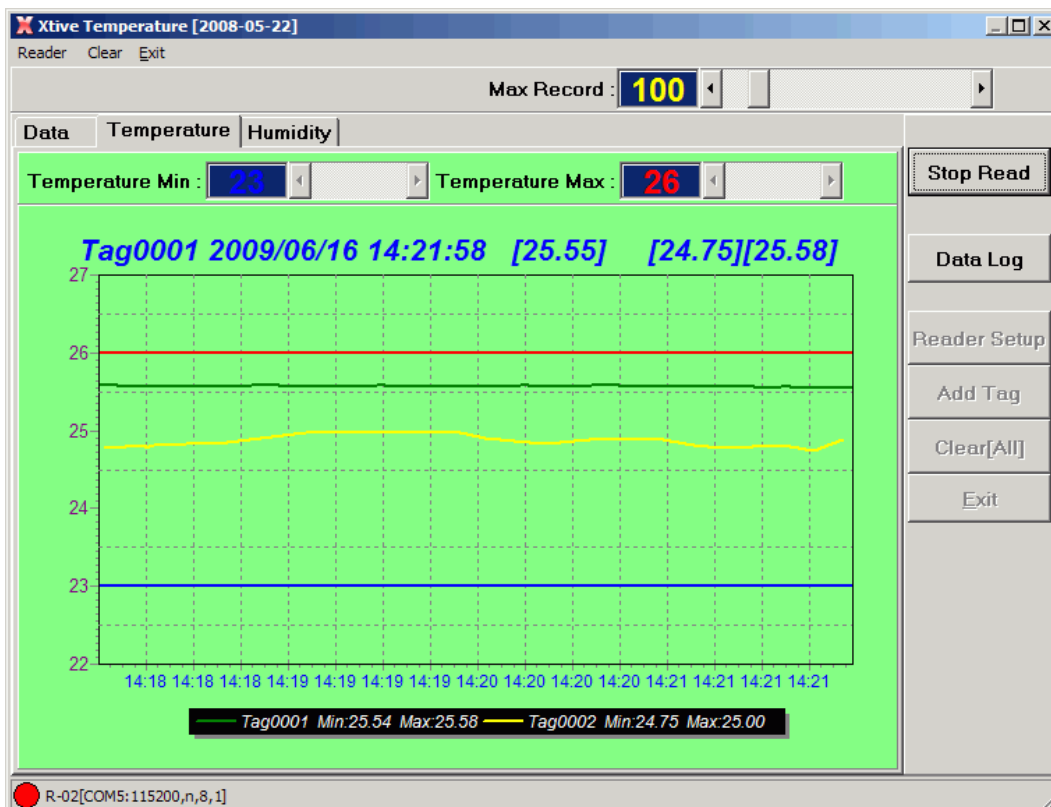
- Tag data will show in main window.



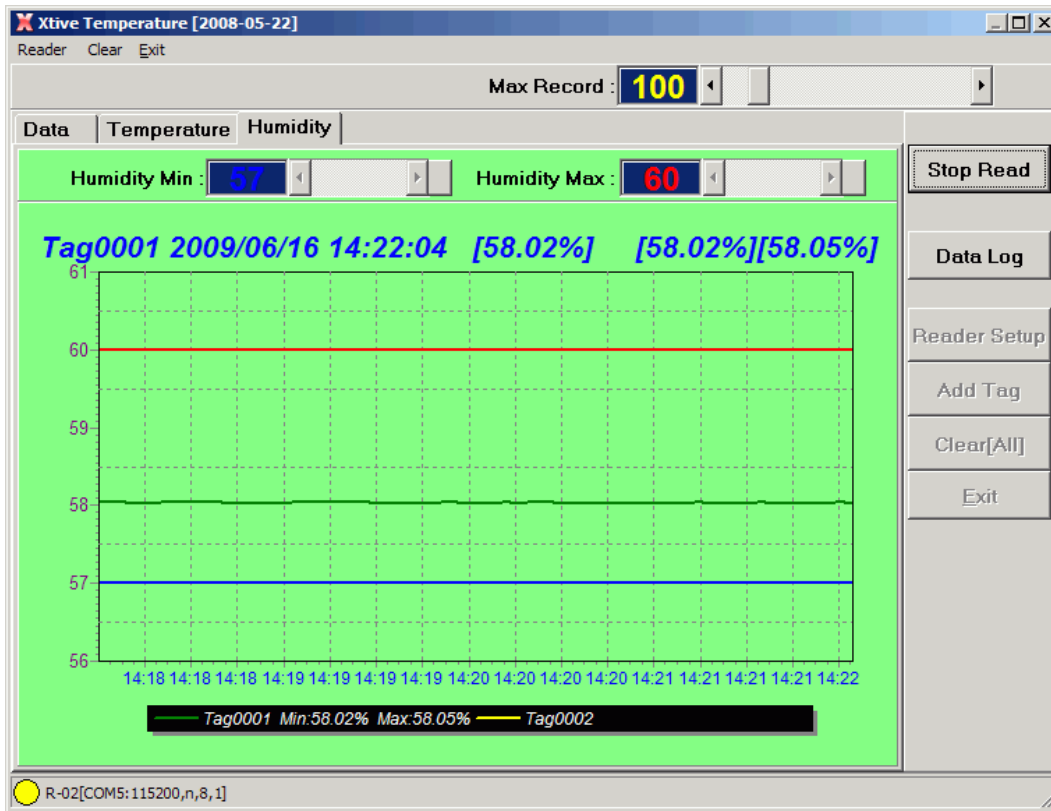
- Click tag name which need monitoring temperature or humidity and start to read tag.



- Temperature monitor



10. Humidity monitor



11. Data Log can list the history of temperature and humidity.

NO	Name	UID
1	Tag0002	0001000107063148
2	Tag0001	0001000108420048
3	Tag0005	0001000108449904

IODate	IOTime	Temperature	Humidity
2009/06/16	14:09:27	25.61	58.24
2009/06/16	14:09:29	25.59	58.24
2009/06/16	14:09:32	25.6	58.24
2009/06/16	14:09:38	25.6	58.24
2009/06/16	14:09:41	25.6	58.21
2009/06/16	14:09:58	25.6	58.21
2009/06/16	14:10:04	25.6	58.24
2009/06/16	14:10:06	25.6	58.21
2009/06/16	14:10:09	25.6	58.21
2009/06/16	14:10:12	25.6	58.21
2009/06/16	14:10:32	25.58	58.21
2009/06/16	14:10:35	25.6	58.24
2009/06/16	14:10:38	25.6	58.21
2009/06/16	14:10:44	25.6	58.21
2009/06/16	14:10:47	25.6	58.24
2009/06/16	14:10:50	25.6	58.21
2009/06/16	14:10:52	25.6	58.21
2009/06/16	14:10:55	25.6	58.21
2009/06/16	14:10:58	25.6	58.21
2009/06/16	14:11:10	25.6	58.21