

SYRDBT-XE

SYRIS Handy Wireless Excite Reader

V0104



SYRIS Technology Corp.

Address: 12F., No.16, Sec. 2, Taiwan Blvd., West Dist.,
Taichung City 403, Taiwan

TEL: +886-4-2207-8888

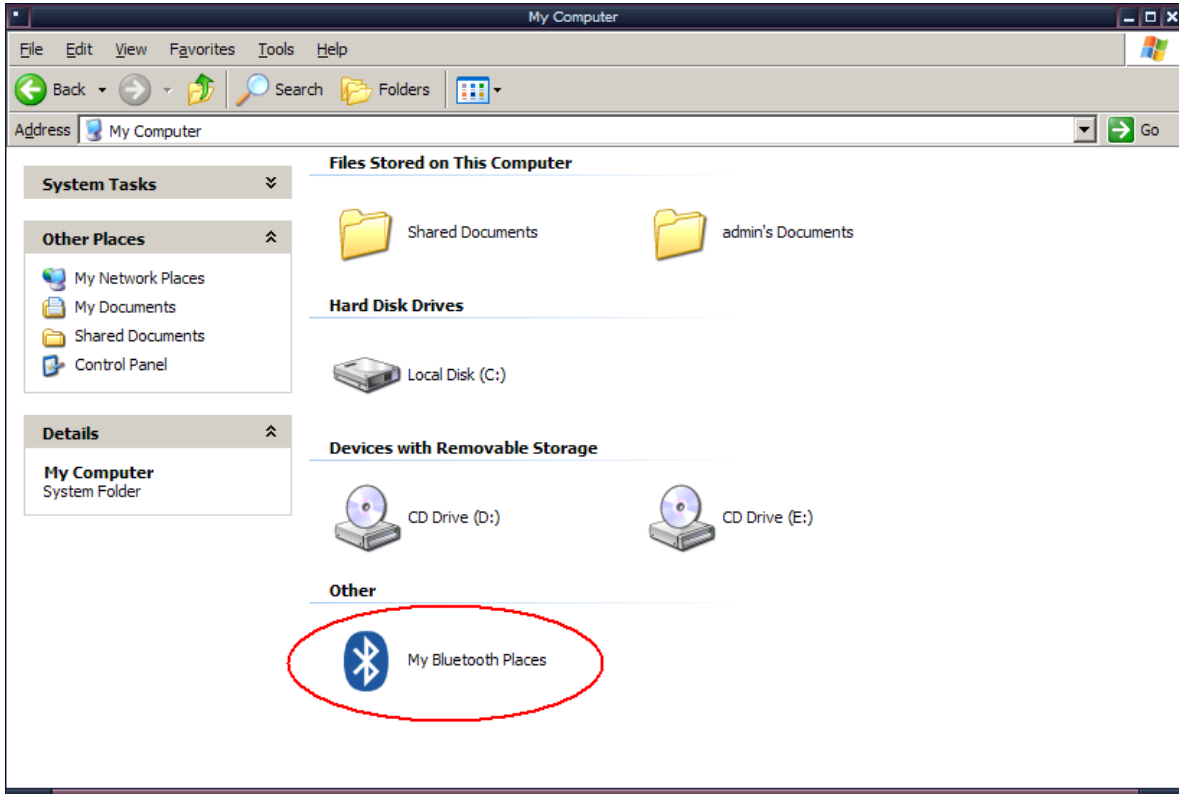
FAX: +886-4-2207-9999

E-Mail: service@syris.com

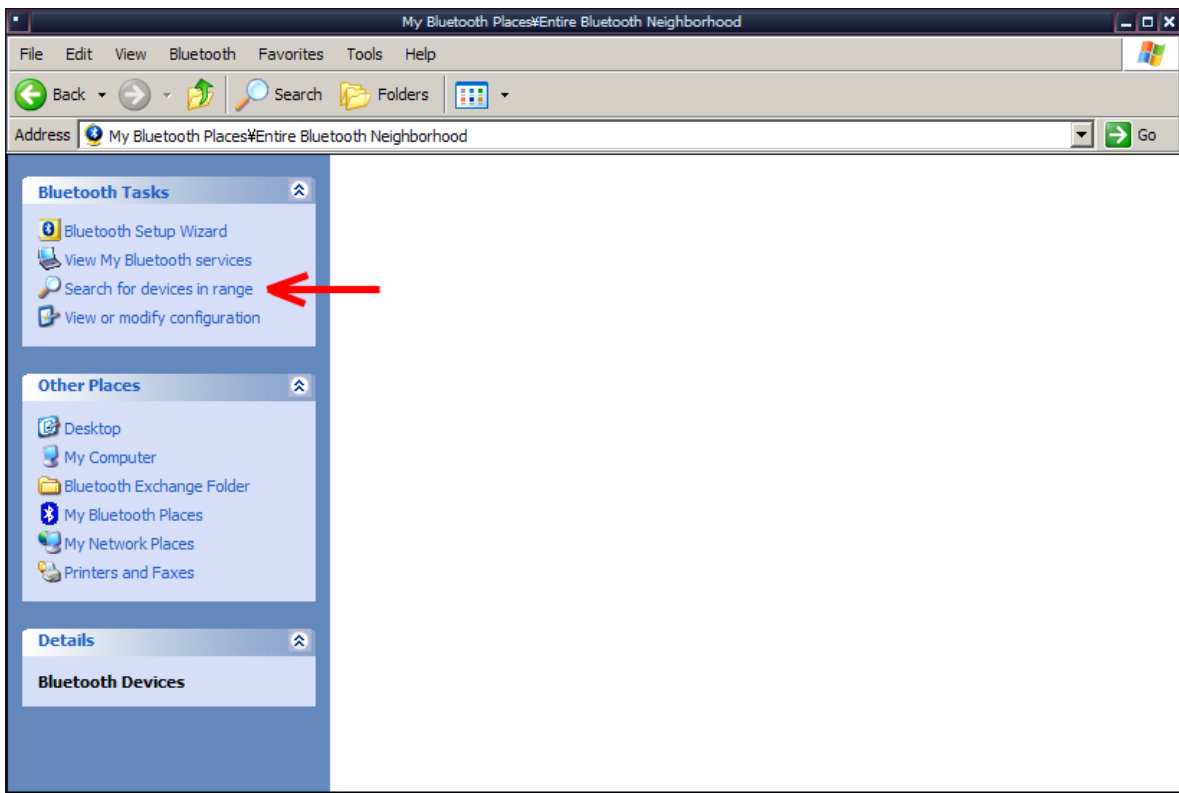
Website: <http://www.syris.com>

SYRDBT Bluetooth connection

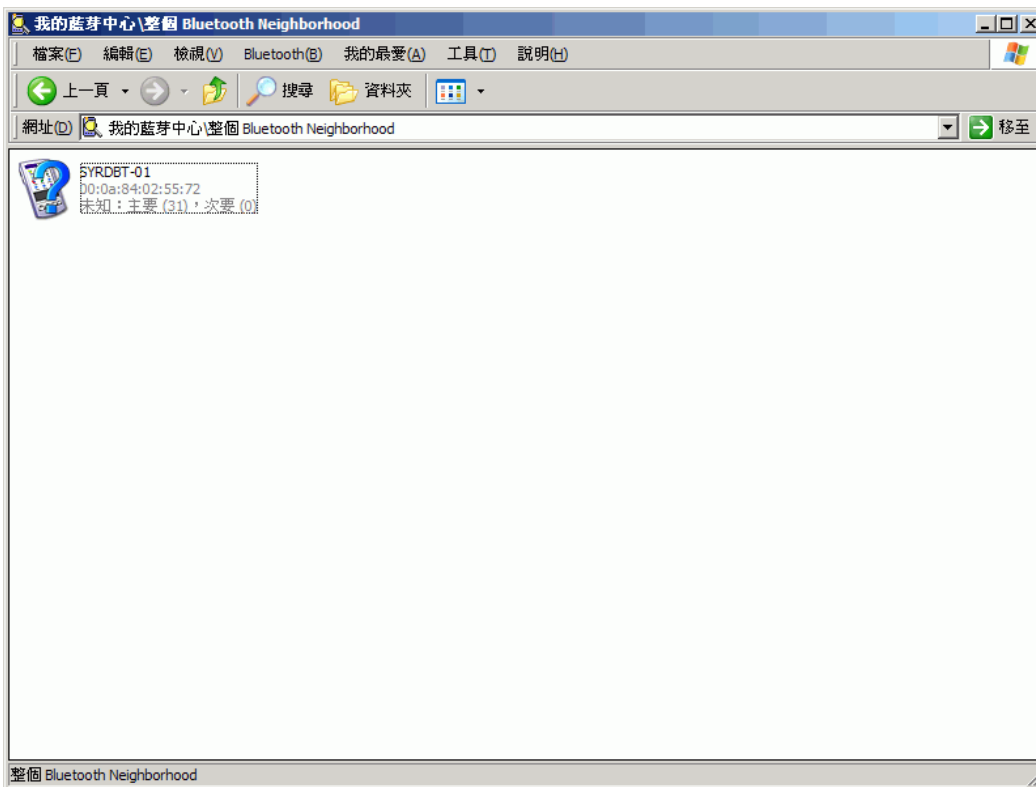
1. Enable your computer's Bluetooth function.
2. After you have successfully installed the Bluetooth software, you will see an icon on your desktop and an icon on Window System Tray. These are two shortcuts to My Bluetooth Places.
3. Double-click My Bluetooth Places.



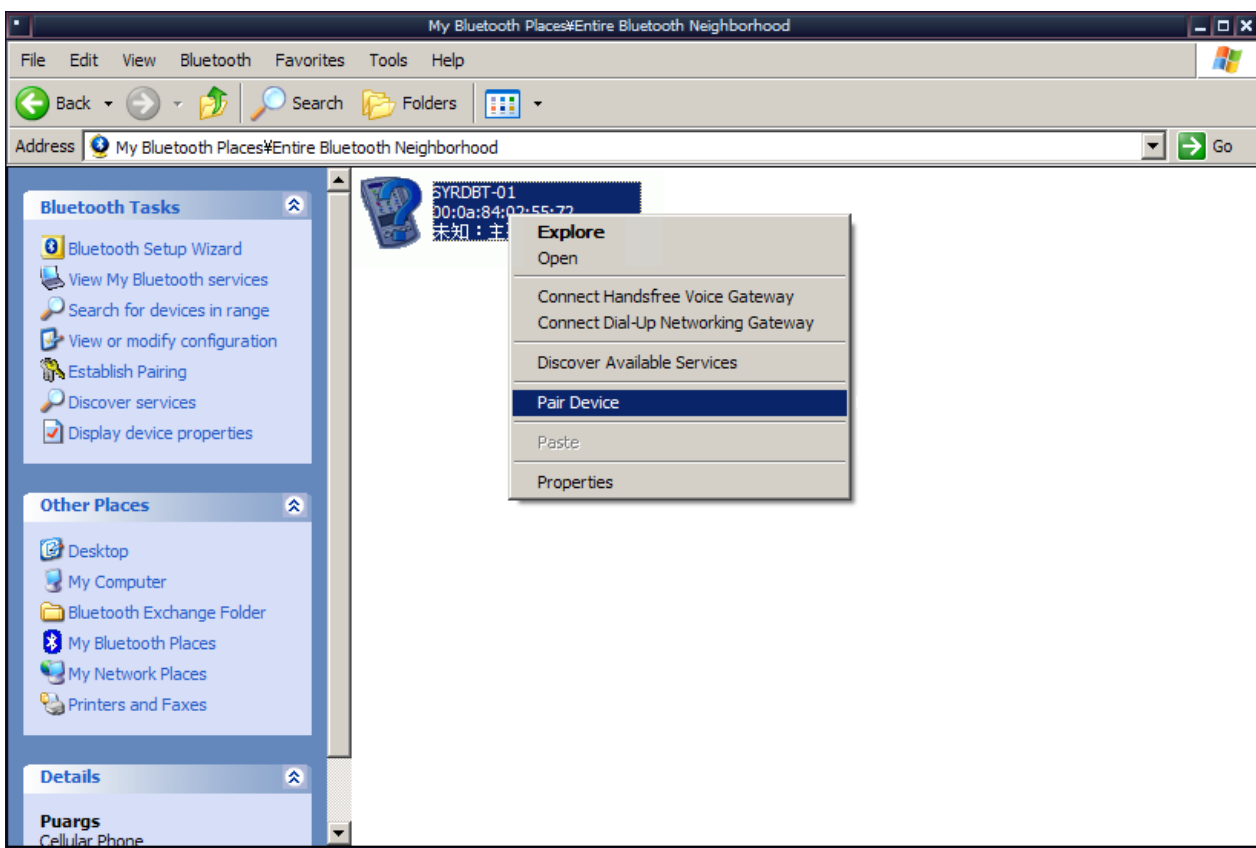
4. Search for Devices looks for Bluetooth devices in the vicinity and displays the devices that it finds in My Bluetooth Places.



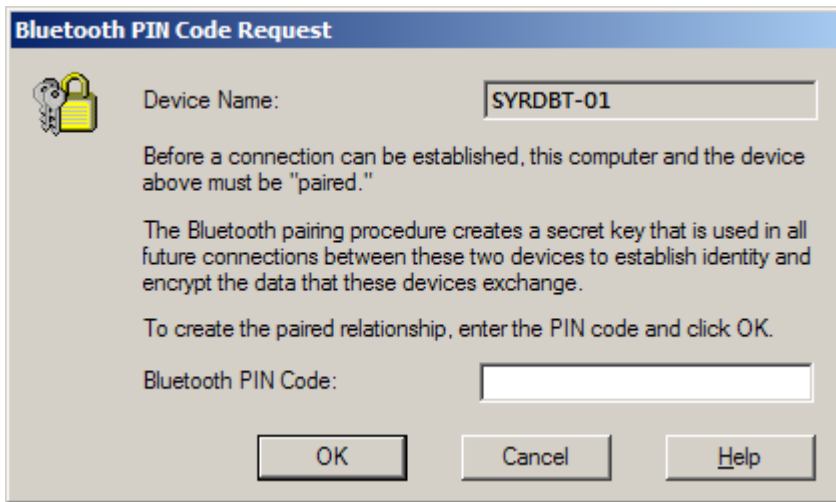
5. After discovering the devices you can have access to, you may perform Service Discovery. Each available device that you have discovered in the Bluetooth Neighborhood provides you with several services.



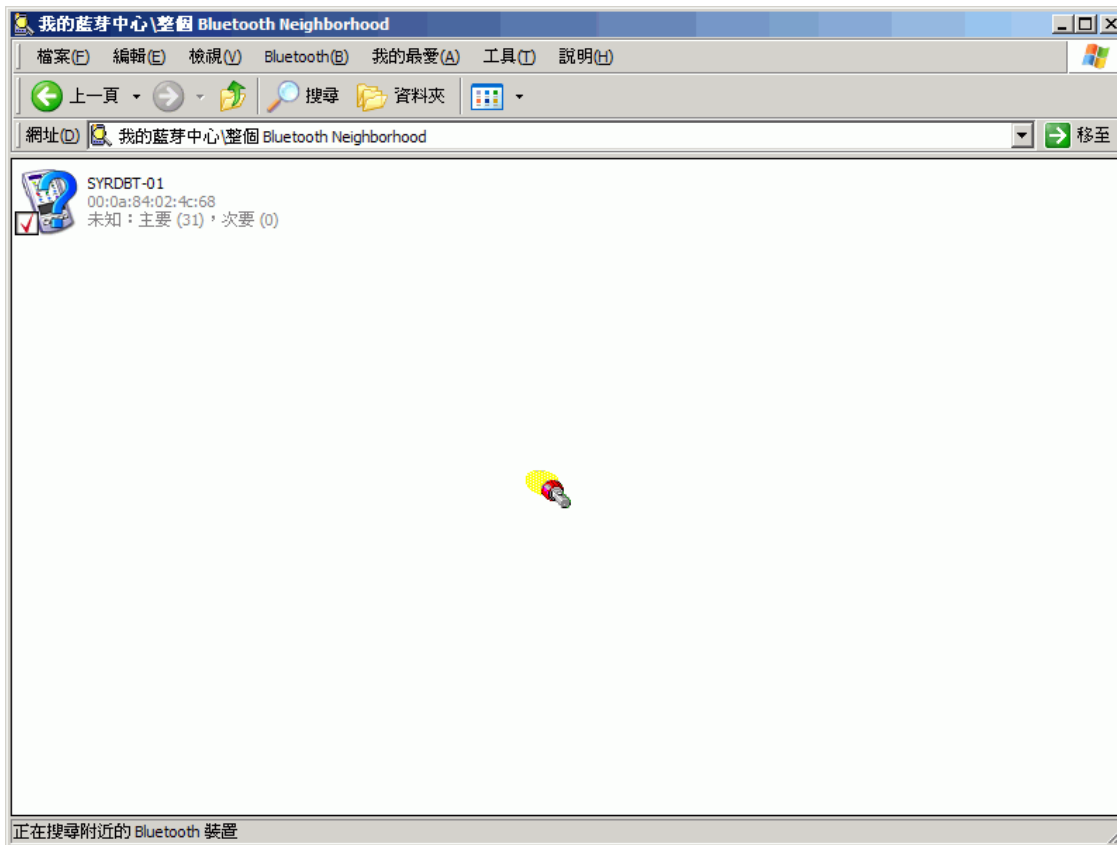
6. Pair with Bluetooth Device.



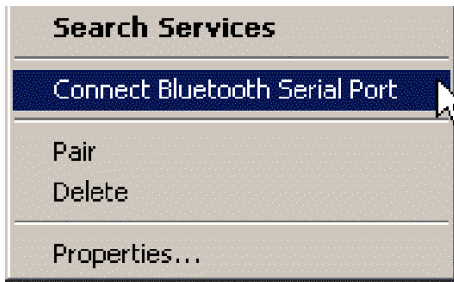
7. SYRDBT default passkey is “8888”.



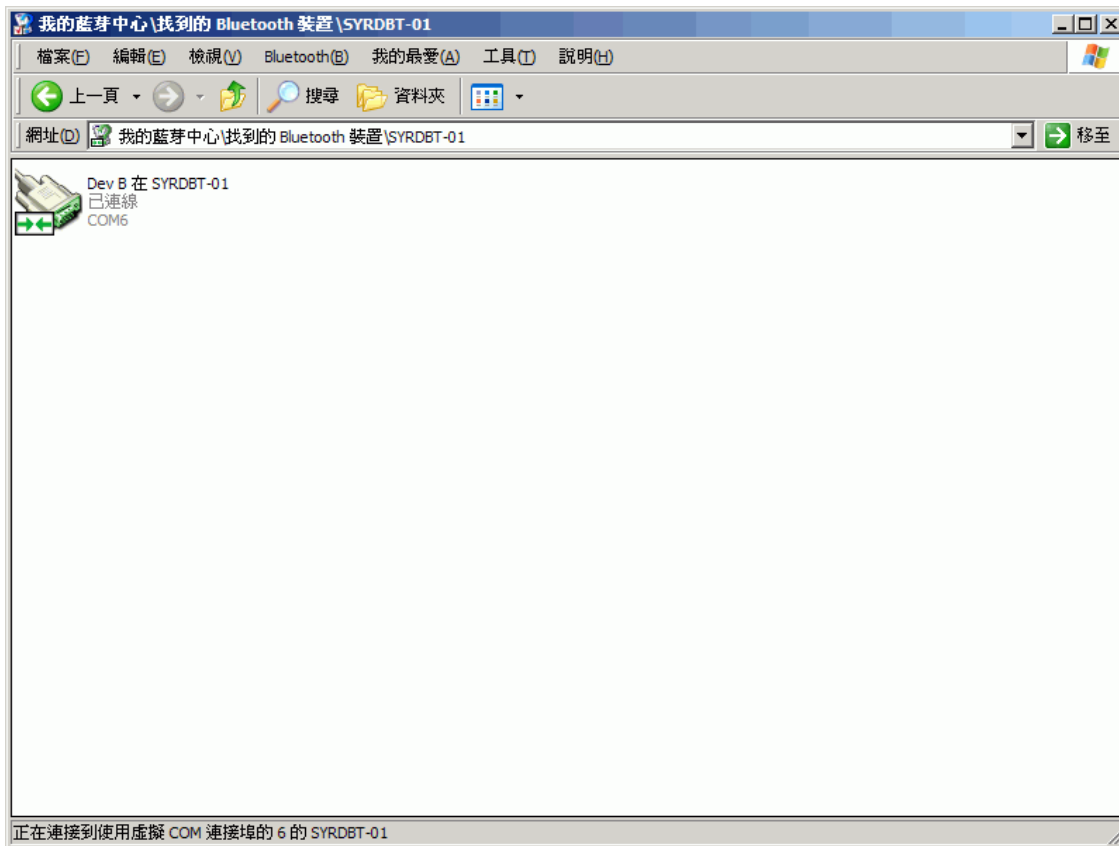
8. Computer and SYRDBT are now paired and able to exchange data.



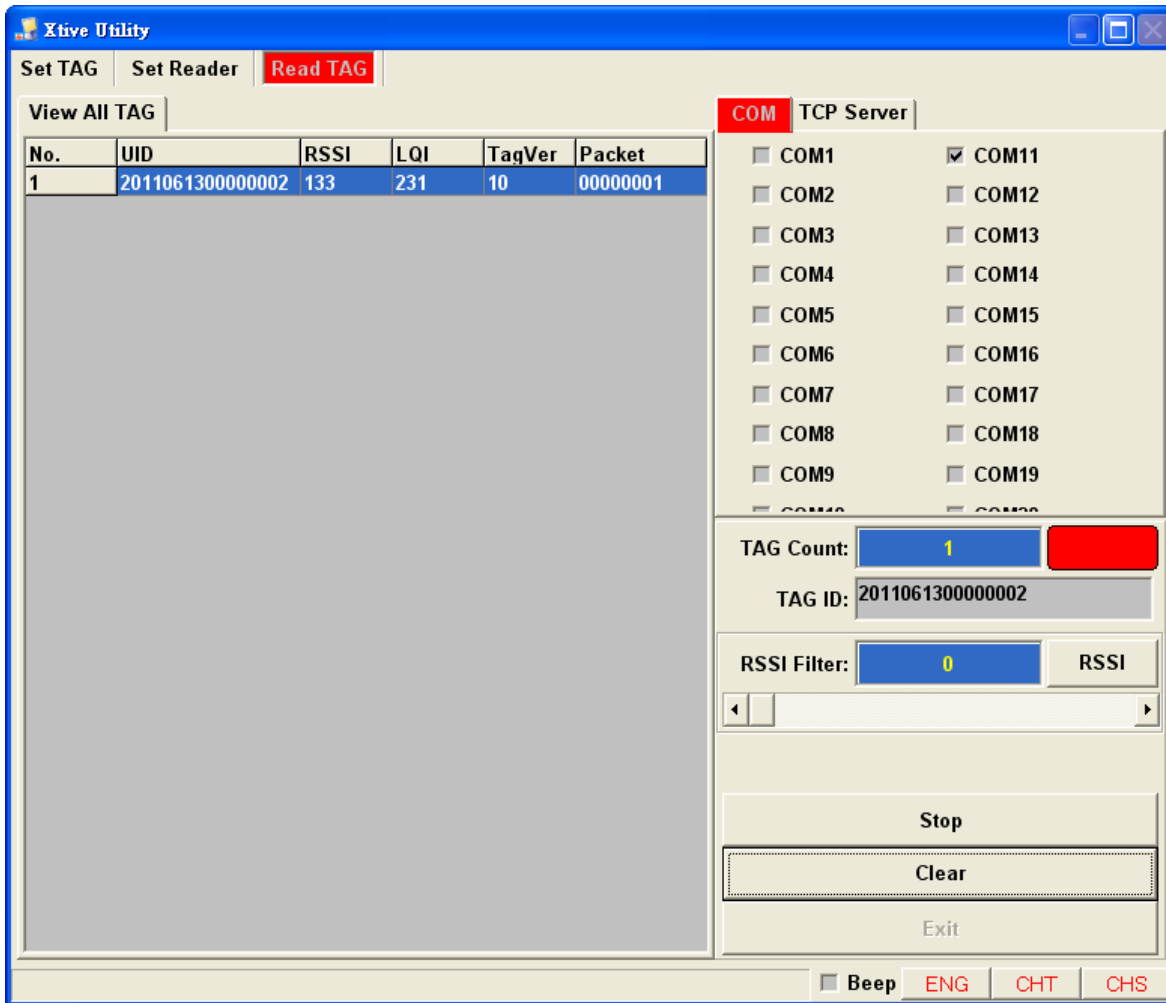
9. Right-click and select Bluetooth serial port services.



10. Bluetooth Serial Port establishes a wireless connection between two Bluetooth devices. The serial connection can be used by applications as though there is a serial cable between the devices.



11. When you finished COM Mapping, you can execute SYRIS Xtive Utility program to read TAG and set parameters.



Starting read TAG will receive Tag information from reader.

Xtivity Utility V0102 [2011-06-28 14:08:10]

Set TAG Set Reader **Read TAG**

View All TAG

No.	UID	RSSI	LQI	TagVer	Packet	Model	KeyNo	Group	S State	Battery	ISN H	ISN L	D 1H	D 1L	D 2H	D 2L	ID	Count
1	0001000110880011	108	211	10	00000001	02	00	00	00001111	15	00	00	FA	A6	3A	98	1234	9
2	0001000107461512	116	221	10	00000001	00	00	00	00001111	15	00	00	00	00	00	00	1234	2
3	2011061300000001	143	219	10	00000001	02	00	00	00001111	15	00	00	40	00	00	00	1234	2
4	0001000111230007	104	213	10	00000001	02	00	00	00001111	15	00	00	FB	33	3C	4D	1234	2
5	0001000111180159	121	221	10	00000001	00	00	00	00001101	15	00	00	00	00	00	00	1234	2
6	0001000109291029	100	185	10	00000001	00	00	00	00001111	15	00	00	00	00	00	00	1234	2
7	0001000107340328	123	163	10	00000001	00	00	00	00001111	15	00	00	00	00	00	00	1234	2
8	0001000111060275	102	211	10	00000001	00	00	00	00001111	15	00	00	00	00	00	00	1234	2
9	0001000107240004	111	223	10	00000001	00	00	00	00001111	15	00	00	00	00	00	00	1234	2
10	2010072910309009	160	223	10	00000001	02	00	00	00001111	15	00	00	40	00	00	00	1234	1
11	0001000108180928	107	223	10	00000001	00	00	00	00001111	15	00	00	00	00	00	00	1234	2
12	0001000111550010	196	235	10	00000001	00	00	00	00001001	15	00	00	00	00	00	00	1234	3
13	0001000107340322	127	227	10	00000001	00	00	00	00001111	15	00	00	00	00	00	00	1234	2
14	0001000111090014	94	213	10	00000001	00	00	00	00001101	15	00	00	00	00	00	00	1234	1
15	2010030900000007	111	217	10	00000001	02	00	00	00001111	15	00	00	40	00	00	00	1234	2
16	2011061300000002	183	233	10	00000001	02	00	00	00001111	15	00	00	40	00	00	00	1234	1
17	0001000110072001	111	231	10	00000001	00	00	00	00001111	15	00	00	00	00	00	00	1234	1
18	0001000110409503	130	239	10	00000001	00	00	00	00001001	15	00	00	00	00	00	00	1234	4
19	2010072910309003	175	231	10	00000001	02	00	00	00001111	15	00	00	40	00	00	00	1234	1
20	0001000107340318	120	223	10	00000001	00	00	00	00001111	15	00	00	00	00	00	00	1234	1
21	0001000111102551	114	221	10	00000001	00	00	00	00001111	15	00	00	00	00	00	00	1234	1
22	0001000110261336	149	39	10	00000001	00	00	00	00001111	15	00	00	00	00	00	00	1234	1
23	0001000120100302	146	217	10	00000001	01	00	00	00001101	7	00	00	00	00	00	00	1234	1
24	0001000110483191	91	183	10	00000001	02	00	00	00001111	15	00	00	03	5F	03	5B	1234	1
25	0001000111070038	114	65	10	00000001	02	00	00	00001111	15	00	00	99	AA	07	22	1234	1
26	0001000110460007	158	237	10	00000001	02	00	00	00001111	13	00	00	FA	AA	3A	D1	1234	3
27	0009000900010001	158	223	30	00000000	25	00	00	00000010	103	F9	BF	00	00	00	00	1234	1
28	0009000900010003	144	239	30	00000000	25	00	00	00000010	103	C8	DF	00	00	00	00	1234	1
29	0009000900010005	178	235	30	00000000	25	00	00	00000010	104	6F	0D	00	77	F8	00	1234	1
30	111122233334444	168	223	30	00000000	25	01	00	00000010	105	C0	A1	52	62	FE	00	1234	1

COM TCP Server

- 192.168.1.193
- 192.168.1.54
- 192.168.1.198
- 192.168.1.104
- 192.168.1.105
- 192.168.1.106
- 192.168.1.107
- 192.168.1.108
- 192.168.1.109
- 192.168.1.110
- 192.168.1.101
- 192.168.1.102
- 192.168.1.103
- 192.168.1.104
- 192.168.1.105
- 192.168.1.106
- 192.168.1.107
- 192.168.1.108
- 192.168.1.109
- 192.168.1.110

Destination Port: 5001

TAG Count: 30

TAG ID: 0001000107340322

Start

Clear

Exit

Beep ENG CHT CHS

Field Introduction:

UID: Tag's identification number.

RSSI: Received Signal Strength Indication (0-255). Reading range and RSSI are inverse proportion.

LQI: Link quality indicator. (0-255)

TagVer: Tag's data format version. (10 is V1, 20 is V2, 30 is V3)

Packet: Tag's data information.(V3 only)

Bit 1 - AES (1 = AES on / 0 = AES off)

Bit 0 - C/UID(0 = CID / 1 = UID) ◦

Model: Tag's model type.

Key NO: If AES is on, this column will show AES key depart number. (V3 only)

Group: Tag's group number. (V3 only)

Battery: Tag's battery status (V1: battery level 0~15, V3: Voltage is "Battery: x 0.0293")

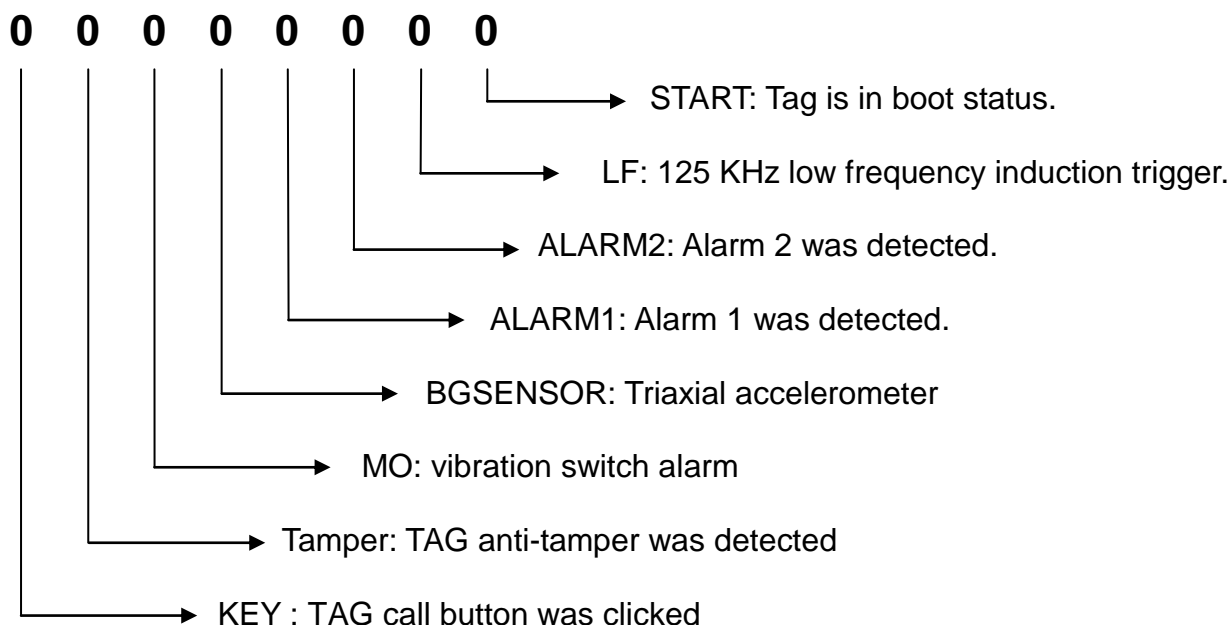
ISN: Tag's packet serial number. (V3 only)

D1, D2: Tag's data (ex. Temperature sensor, humidity sensor.)

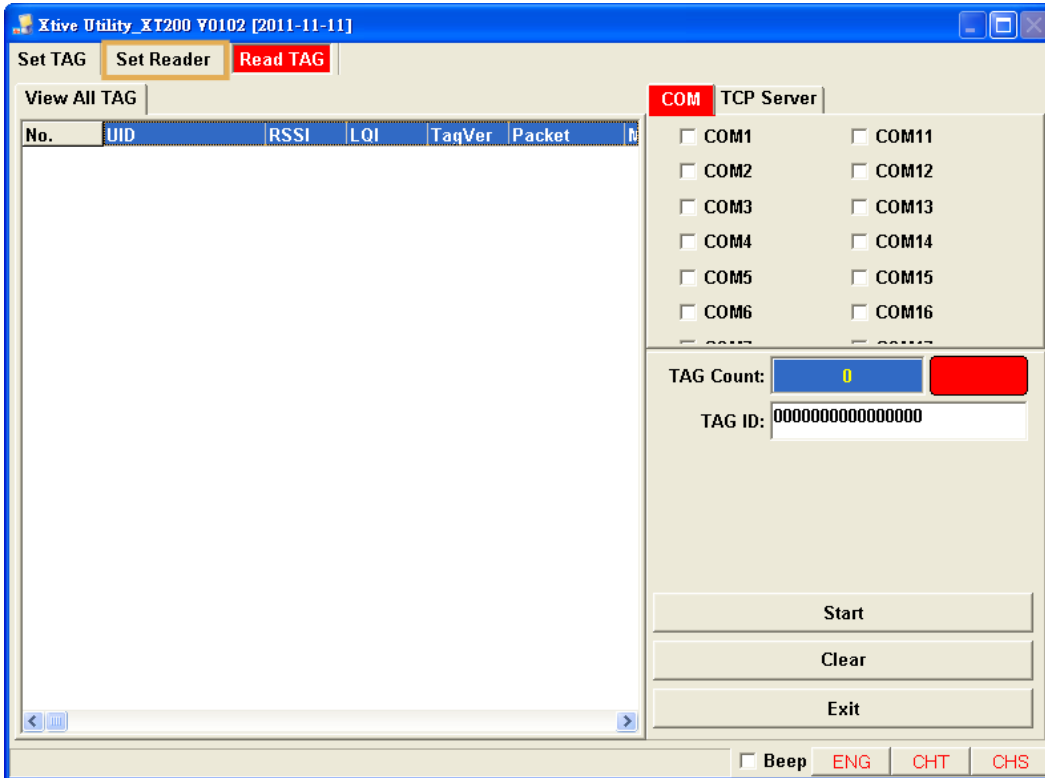
Tag's exciter's ID will show on "D_2H" field.

ID: Reader's device ID .

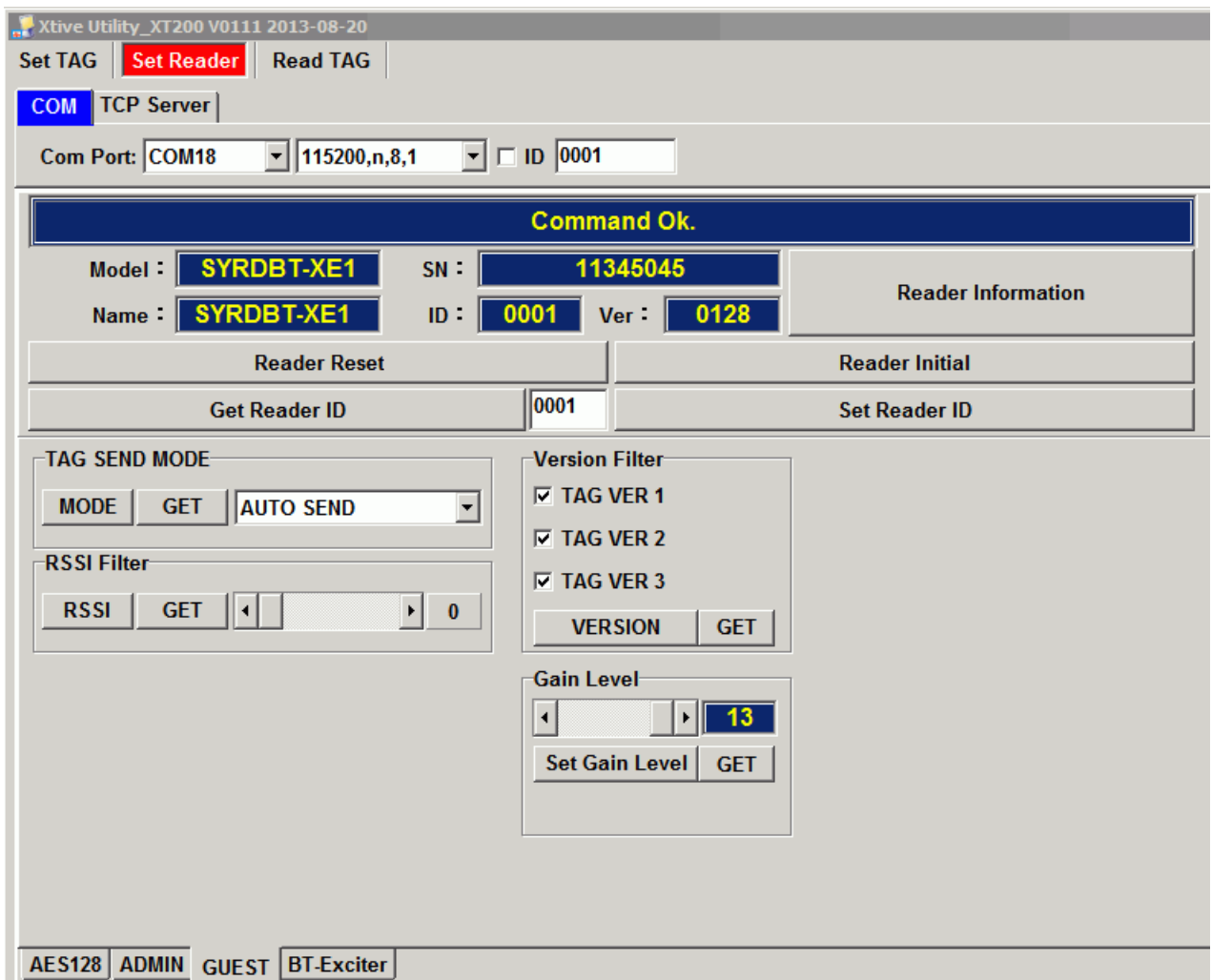
S_State: Tag's trigger status.



12. Click Set Reader to communicate with Reader



Select correct COM port and click “Reader Information” to communicate with Reader.



Reader information: Get reader's information

Reader Reset : Reset online reader. Reader will warm restart.

Reader Initial : Initial online reader. All setting will set to factory default.

Get Reader ID: Get the ID of the reader.

Set Reader ID: Input the number to ID field and then click "Set Reader ID" to change Reader's ID.

TAG SEND MODE: Set reader's auto send mode when receive tag.

STOP SEND - Stop to receive tag.

AUTO SEND - Receive tag's data automatically.

RSSI Filter: Adjust RSSI level (0~250) to filter TAG which have low RSSI signal in reader.

Version Filter: Filter the version of tag.

Gain Level: Adjust Gain level (1~13) to control reader's read range.

Level 13 is the max range (default setting), Level 1 is the shortest read range.

Click "BT-Exciter" tab.

The screenshot displays the 'Xtivity Utility' software interface. At the top, the title bar reads 'Xtivity Utility_XT200_V0106_2012-11-05'. Below the title bar, there are tabs for 'Set TAG', 'Set Reader', and 'Read TAG'. The 'COM' tab is active, showing 'TCP Server' as the connection type. The 'Com Port' is set to 'COM18', the baud rate is '115200,n,8,1', and the 'ID' is '1111'. A 'Command Ok.' message is displayed in a blue box. Below this, the 'Reader Information' section shows the 'Model' as 'SYRDBT-XE1', 'SN' as '12345678', 'Name' as 'SYRDBT-XE1', 'ID' as '1111', and 'Ver' as '0125'. There are buttons for 'Reader Reset', 'Reader Initial', 'Get Reader ID', and 'Set Reader ID'. The 'Exciter ID' is set to '5678', and the 'Set Exciter ID' button is highlighted. The 'Get Battery Level' button shows '80%'. The 'PowerMode' section includes 'Power Off Time' set to '180 Sec', a 'Reader Auto Off' checkbox (unchecked), and a 'Press Key Auto Off' checkbox (checked). The 'ReaderMode' section includes 'Operation Mode' set to 'Exciter Detect', 'Send Times' set to '0015', and 'Send Delay' set to '0022 X 10 ms'. The 'Battery' section includes an 'alert level' set to '25%'. At the bottom, there are buttons for 'Get Parameters', 'Set Parameters', and 'Parameter Initial'. The 'BT-Exciter' tab is selected in the bottom navigation bar, along with 'AES128', 'ADMIN', and 'GUEST'. An 'Exit' button is located at the bottom right.

Exciter ID : Set up the device's exciter ID.

Power Mode:

Power off time: Set auto turn off device. (Default is 180 sec)

Reader Auto Off: Enable auto turn off function.

Press Key Auto Off: Enable this function means you can turn off device with call button.

- 13.** Set up correct parameters and click “**Set Parameter**” to change mode of device.

PowerMode Power Off Time: 0180 Sec <input type="checkbox"/> Reader Auto Off <input checked="" type="checkbox"/> Press Key Auto Off	ReaderMode Operation Mode: Exciter Detect Send Times: 10 Send Delay: 30 X 10 ms	
Get Parameters	Set Parameter	Parameter Initial

Normal reader:

The devices always enable 2.45 GHz xtive reader function. 125 KHz exciter function was enabled with call button.

Exciter detect:

The device enables 125 KHz exciter and 2.45GHz xtive reader function. In this mode, SYRDBT-XE will receive the tag which detected this device’s exciter ID.

Exciter only:

The devices only enable 125 KHz exciter function.

Send Times: Set 125 KHz exciter trigger times when call button was clicked.

Send Delay: Set interval of 125 KHz exciter trigger.

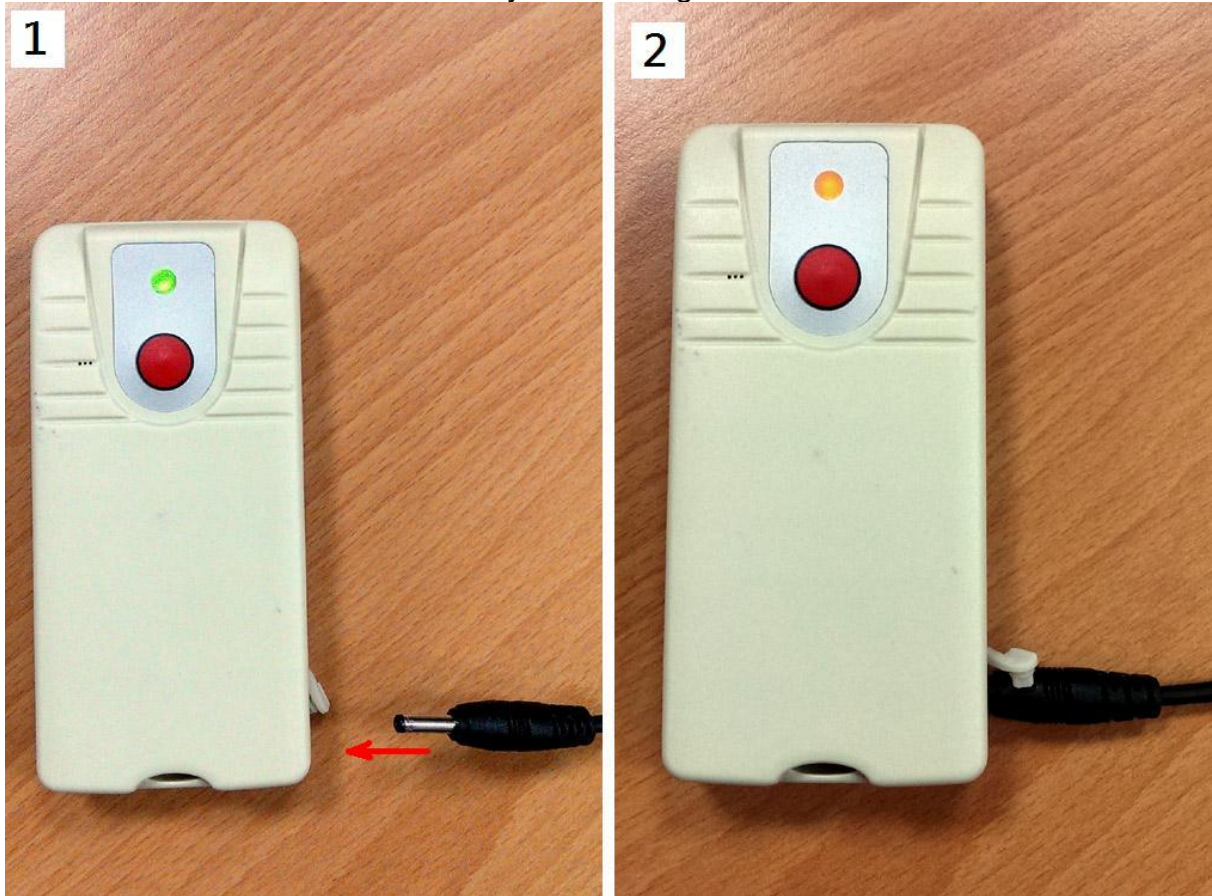
14. Set alert level : When the reader's battery capacity level less than alert level, the reader will auto off.

The screenshot shows the 'Xlive Utility' software interface. At the top, there are buttons for 'Set TAG', 'Set Reader', and 'Read TAG'. Below that, the 'COM' section is set to 'TCP Server' with 'Com Port' as 'COM18', '115200,n,8,1', and 'ID' as '1111'. A 'Command Ok.' banner is present. The 'Reader Information' section displays: Model: SYRDBT-XE1, SN: 12345678, Name: SYRDBT-XE1, ID: 1111, Ver: 0125. Below this are buttons for 'Reader Reset', 'Reader Initial', 'Get Reader ID' (showing 1111), and 'Set Reader ID'. The 'Exciter ID' is 5678, and the 'Get Battery Level' button shows 80%. The 'PowerMode' section includes 'Power Off Time: 180 Sec', 'Reader Auto Off' (unchecked), and 'Press Key Auto Off' (checked). The 'ReaderMode' section includes 'Operation Mode: Exciter Detect', 'Send Times: 0015', and 'Send Delay: 0022 X 10 ms'. The 'Battery' section shows 'alert level: 25 %'. At the bottom, there are buttons for 'Get Parameters', 'Set Parameters', 'Parameter Initial', and 'Exit'.

Click "Get battery level" to check current battery capacity level.

15. Charge SYRDBT-XE with 5V USB cable.

- A. Plug into charge cable will trigger 2 beep sound that means bluetooth reader reboot and turn off succeeded.
- B. SYRDBT-XE will change LED status to orange when charging.
- C. LED status will auto off when battery is full charged.



Note. Sometimes you will get long beep sound that means reader reboot fail. You need re-plug charge cable.