

# SYRD245-1W

## 2.45 GHz RFID Reader

# User Manual



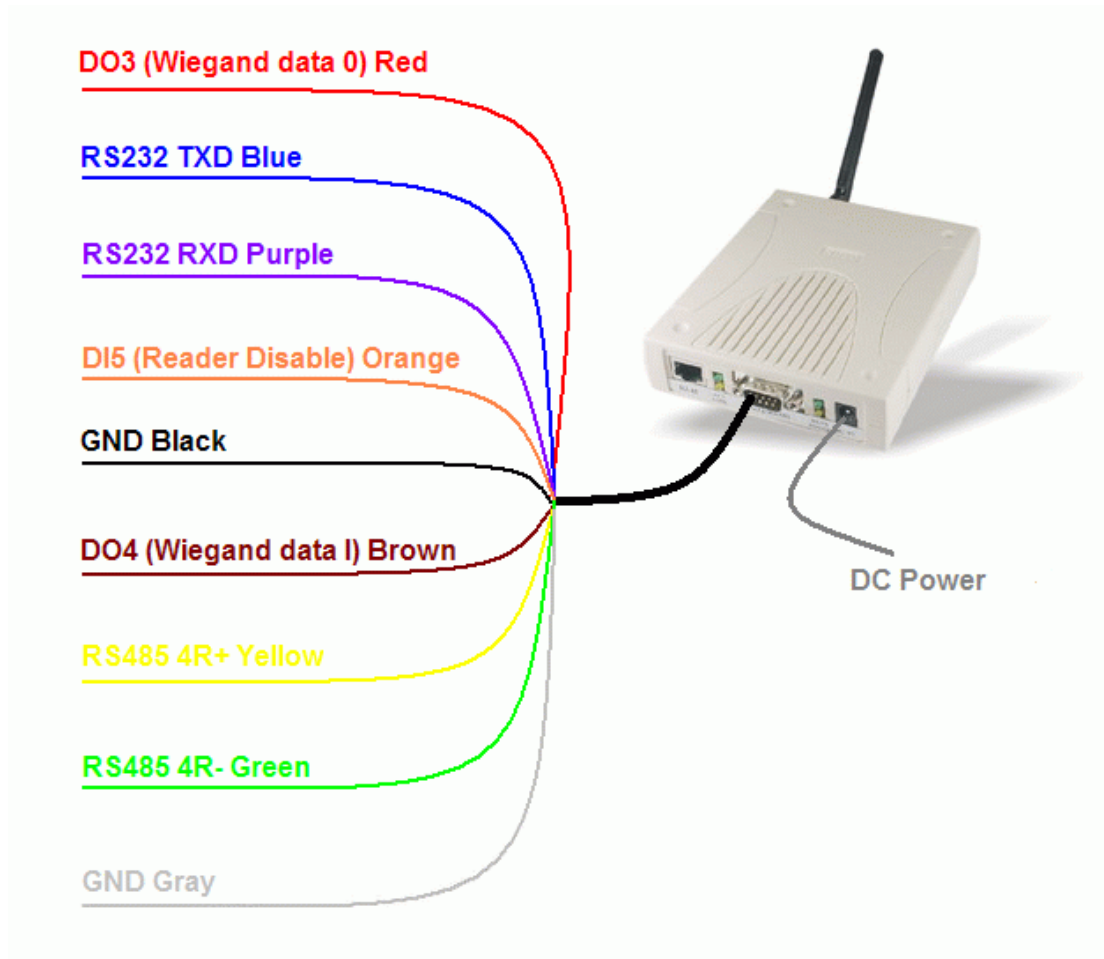
**Version 1.50**  
2019/01/22

## I . Product Specification

Communication	2.45 GHz Support read and write
Frequency	2.40~2.48 GHz
Channel	316
RSSI	0-255
LQI	0-255
Programmable	Set Parameter
LED	Multi-LED visual indication
RS232	RX, TX
RS485	+, -
Wiegand formats	26 bits, 34 bits, 42 bits
Baud Rate	2,400 bps ~ 115,200 bps
Power Input	7 VDC ~ 15 VDC
Action Current	MAX 500 mA @ 12 VDC
Operating Temperature	-20 °C to 65 °C, 5 to 95%RH
Storage Temperature	-30 °C to 85 °C, 5 to 95%RH
Dimension	107W x 138H x 30D (mm)

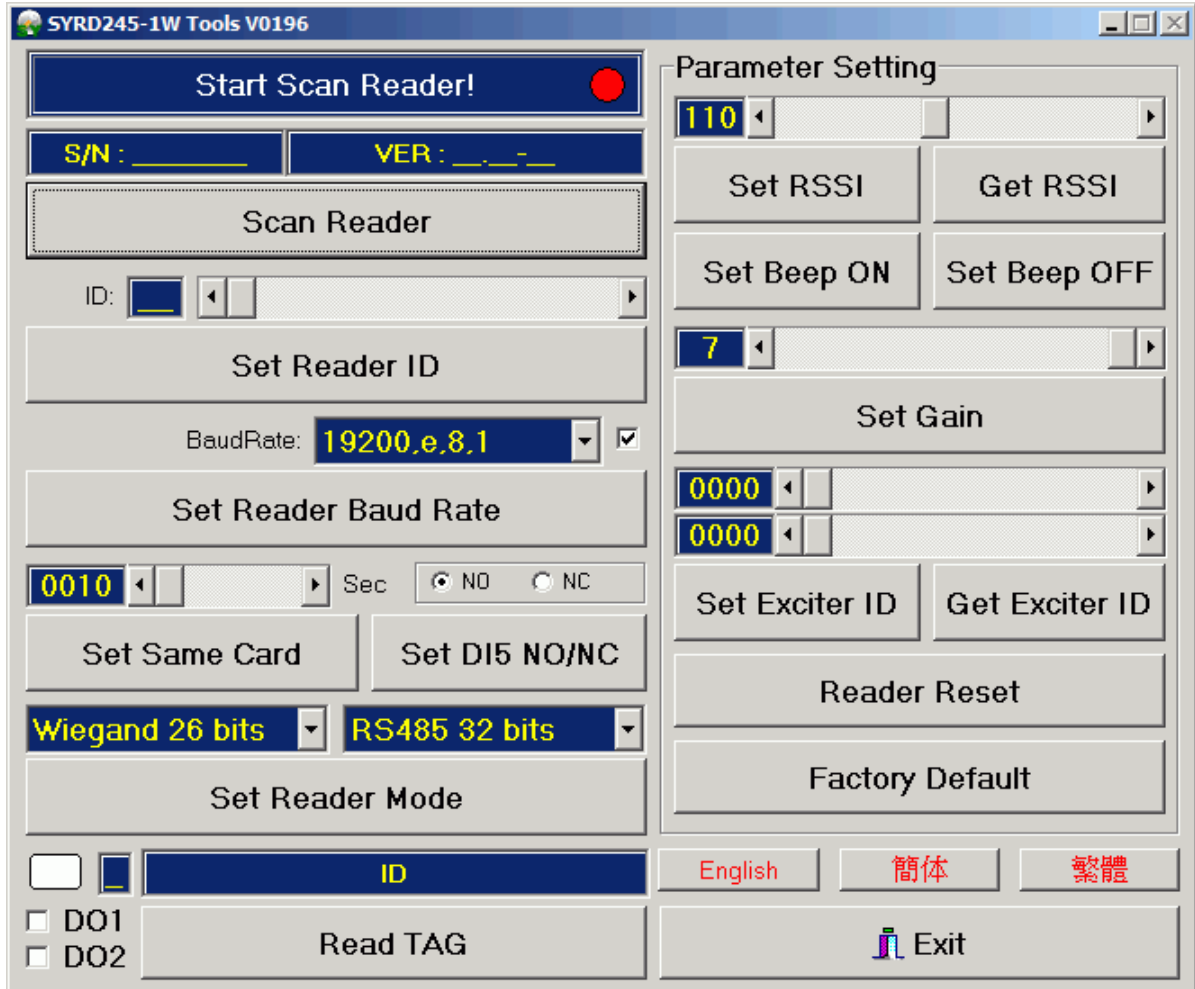
## II . The Diagram of the System Connection

SYRD245-1W Reader can connect with 3 different interfaces : RS-485 or Wiegand or RS-232.

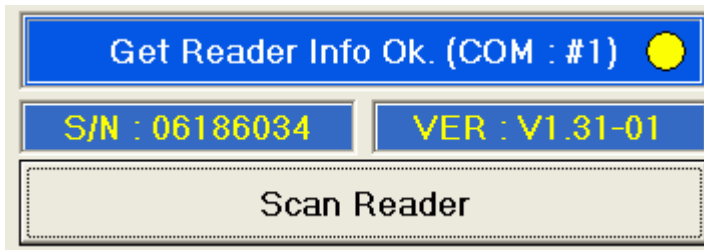


### III. Use SYRD245-1W Reader Config software

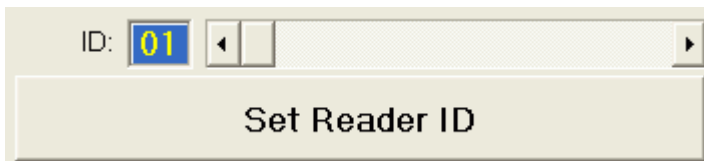
Execute SYRD245\_1W\_Tools\_V0196.exe in “SYRIS Xtive DVD-ROM\SYRD245-1\Utility\”



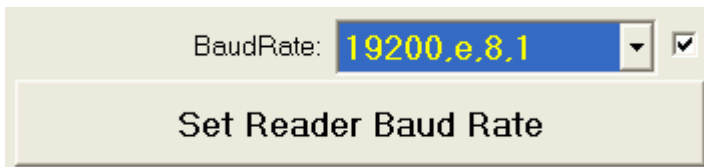
1. Scan Reader to get reader's serial number and firmware version.



2. Adjust the ID number and then click "Set Reader ID" to change Reader's ID.



3. Select communication Baud rate and then click "Set Baud rate" to change Reader's Baud rate.



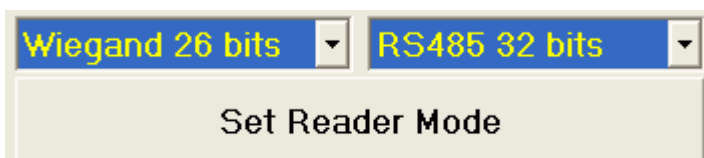
4. Adjust the number of Sec to set same card interval.



Ex. Set Same card interval to 10 sec. Reader will not receive same tag between 10 sec.

5. Set DI NO/NC to change RELAY ON/OFF mode.

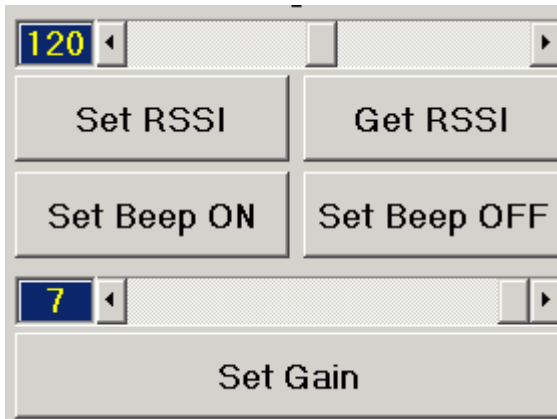
6. Set reader mode to Wiegand or RS485



7. Click “Read TAG” to receive TAG information.

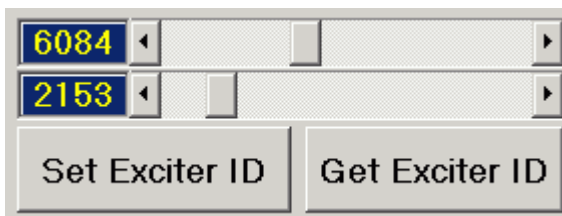


8. Adjust RSSI level (0~250) to filter TAG which have low RSSI signal in reader.  
(This function was available in version 1.30 or above.)



Ex. Set RSSI Level to 120, Reader will receive tag which RSSI are stronger than 120.

9. Set Gain (1~13) to control reader’s read range.  
Level 13 is the max range (default setting), Level 1 is the shortest read range.
10. Set Exciter ID (This function was available in version 2.03 or above.) :  
This parameter should use with SYRIS exciter, default values are “0000” means disable. If this function enable, reader will only receive tag’s signal which include set exciter ID.



11. Reader Reset: Reset online reader. Reader will warm restart.  
Factory Default: All setting will set factory default.



---

### FCC Statement

NOTE: This equipment has been tested and found to comply with the limits for a Class B digital device, pursuant to part 15 of the FCC Rules. These limits are designed to provide reasonable protection against harmful interference when the equipment is operated in a commercial environment. This equipment generates, uses, and can radiate radio frequency energy and, if not installed and used in accordance with the instruction manual, may cause harmful interference to radio communications. Operation of this equipment in a residential area is likely to cause harmful interference in which case the user will be required to correct the interference at his own expense.

Changes or modifications not expressly approved by SYRIS Technology Corp. Could void the user's authority to operate this equipment.