

SYRIS Bluetooth Handheld RFID Reader

OPERATION MANUAL

V01.00

Model : RD700-H1, RD700-U1

Features :

- Support for full 860 to 960 MHz UHF RFID carrier frequency range to accommodate worldwide regulations (RD700-U1)
- Compatible with EPC Class 1 Gen 2;ISO-18000-6C (RD700-U1)
- Compatible to read multi-ISO format HF cards (RD700-H1)
- Built-in memory records.
- Bluetooth transmission range: up to 20m.
- Provide protocol to develop.



Specifications :

Display	0.96 inch TFT IPS display
UHF RFID Frequency	860~960MHz
UHF Read Range	up to 50 cm (depends on tag's antenna)
UHF Card Types	EPC Class 1 Gen 2;ISO-18000-6C
HF RFID Frequency	13.56 MHz (Multi-Format)
HF Read Range	1cm ~ 5cm
HF Card Types	ISO14443A/B, ISO15693, Mifare, Desfire UID
Storage	1,000 records including time
Interface	Bluetooth HID Keyboard / USB Type-C(CDC)
Bluetooth transmission range	up to 20m
Button	3 buttons
Status Indicator	LED display & LED R/G/B & Beeper
Operating Temperature	-10°C ~ 60°C
Battery	3.7V 900mAH Rechargeable Lithium Battery
Power	USB power - 5V 500mA
Size(mm)	40 (W) x 100 (H)x 25 (D)mm

Index

RD700 Hardware Connection.....	2
USB virtual COM port.....	3
Common Setting	4
Bluetooth keyboard connection	7

RD700 Hardware Connection



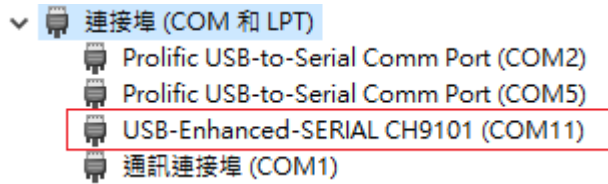
Press: power on, read card
Long press: shut down

Select records

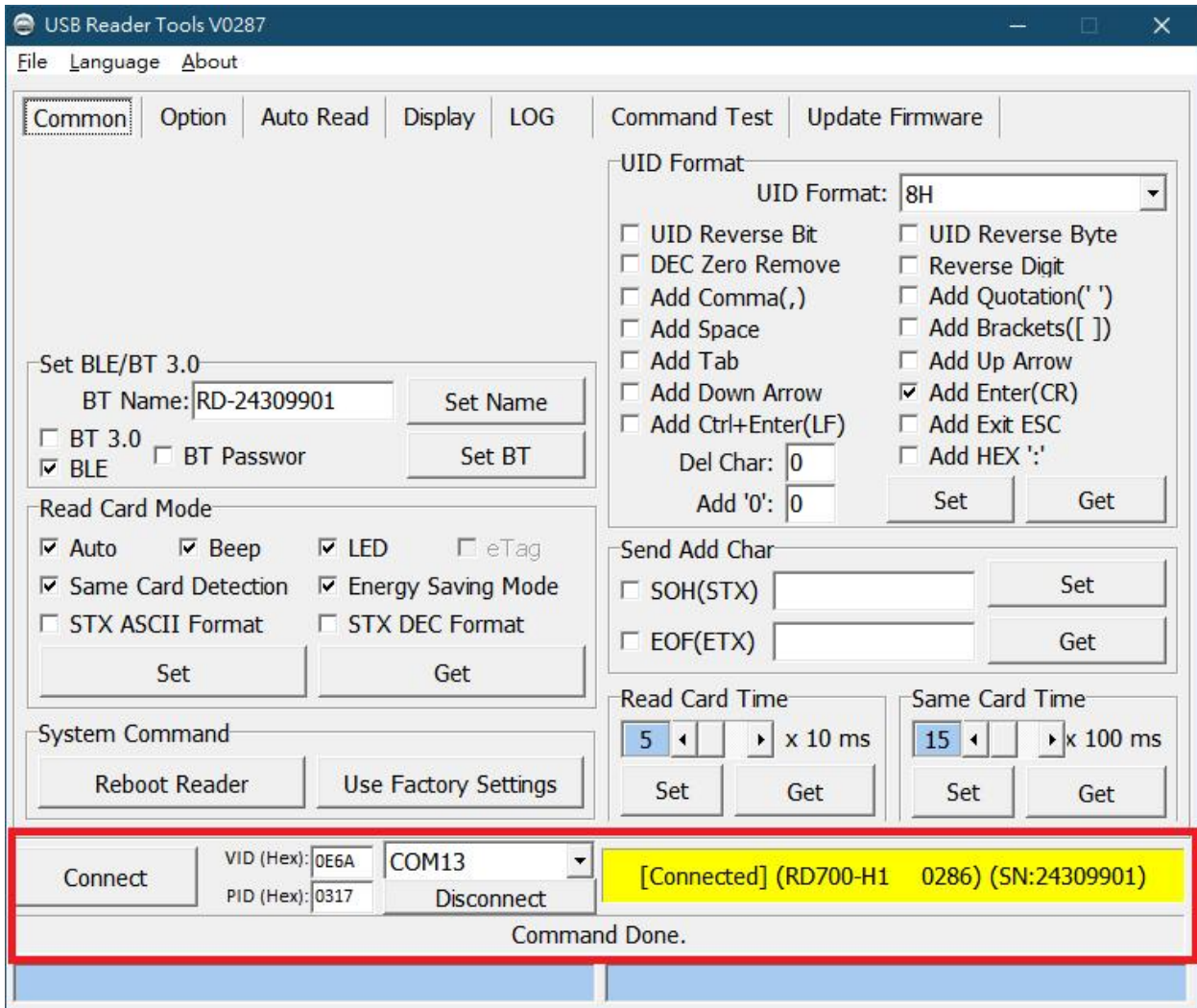
USB type C:
Charge and connect to virtual serial port

USB virtual COM port

1. Connect USB Type C to computer and windows device manager will create a COM port number.



2. Connect reader tool with virtual COM port to setup parameters.



Common Setting

1. Bluetooth connection (default is BLE.)

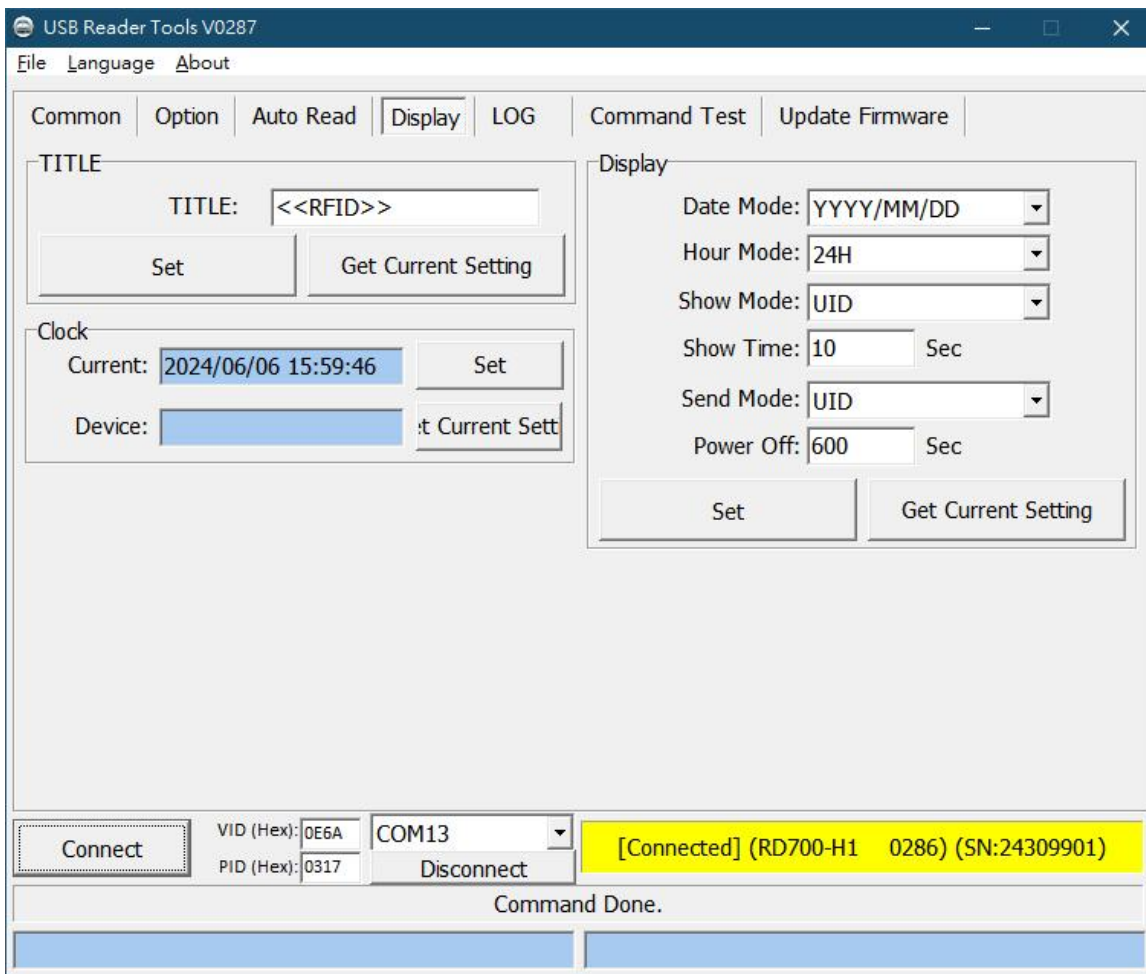
RD700 support Bluetooth BLE and Bluetooth 3.0 keyboard emulation.

2. Send ID Format

The ID format example as below:

ID Format	Example Result
4H	58E8
6H	D558E8
8H	00D558E8
10H	1800D558E8
16H	0000001800D558E8
32H	00000000000000000000000000000000001800D558E8
5D	47295
8D	01226943
10D	0001226943
13D	0098785474751
4D	6493
AUTO/ASCII/FDX	000000001226943
16H + Card ID Reverse	E858D50018000000
16H + Comma	0000001800D558E8,
16H + Brackets	[0000001800D558E8]
16H + Quotation	'0000001800D558E8'

3. Display



TITLE : Set the display title when RD700 is powered on.

Clock : Set the RD700's clock to be the same as your computer's

Date Mode : Display date format.

Hour Mode : Display clock format

Show Mode : Display the ID format of the read card

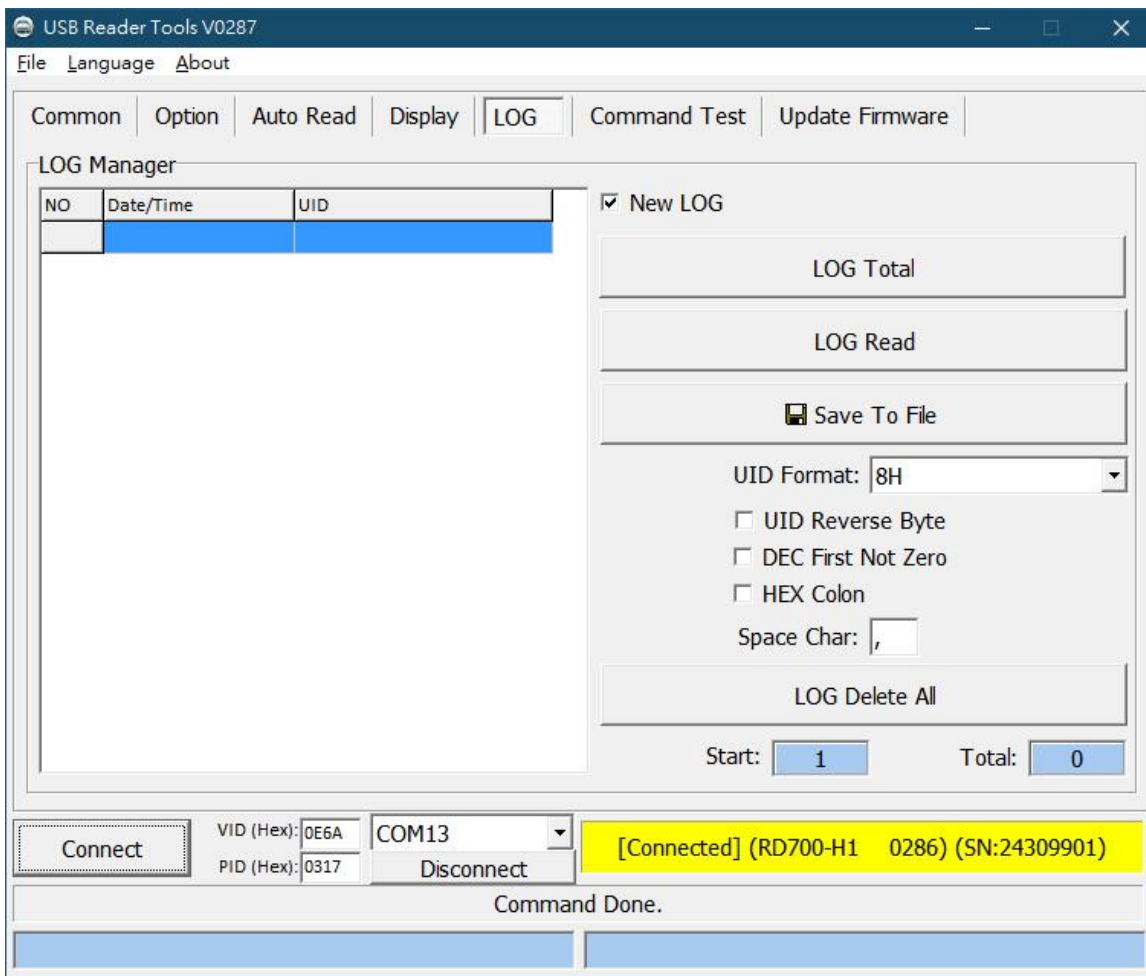


Show Time : Card reading display time

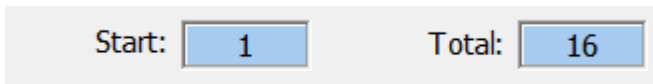
Send Mode : Bluetooth keyboard output format

Power Off : Power auto off time.(Default is 600 seconds)

4. LOG



LOG Total : Count RD700's data log



LOG Read : Read data log from RD700.(Select correct UID format first.)

Save To File : Save to csv file.

UID Format : Set the UID format and then read the data log.

Format option : UID Reverse Byte, DEC First Not Zero, HEX Colon

LOG Delete All : Delete all data log from the reader.

Bluetooth keyboard connection

1. Pairing the Keyboard

You must have a Bluetooth-enabled device to work with this unit.

- A. Turn on the RD700 reader.
- B. Reader's LED indicator will flash in blue.



- C. Activate the Bluetooth feature on your Bluetooth device and start searching. Then select "RD-xxxxxxx".
(xxxxxxx is RD700's serial number)



- D. The Reader's LED indicator will stay on blue after you have successfully paired the unit.

2. Read RFID tags and simulate keyboard output

Open a text input APP or software to read tags with the RD700.

