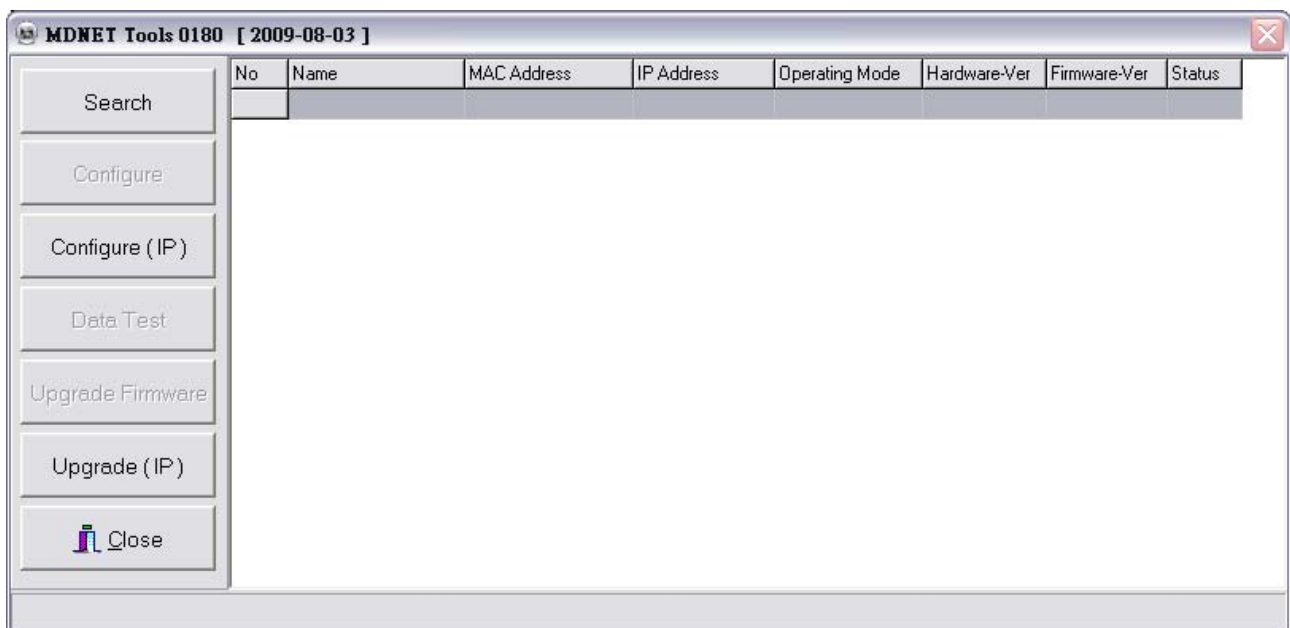


MDNET Tools Operation Manual

Version: 0200



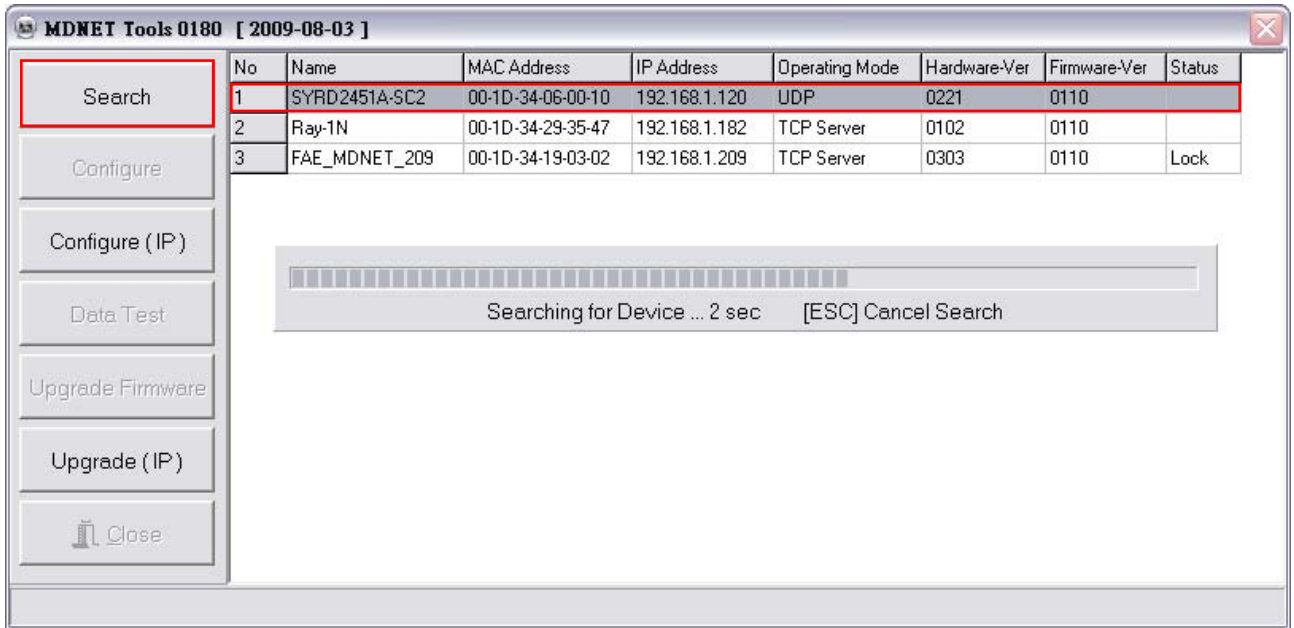
Contents

1. MDNET Tools Operation Manual (English).....	1
2. MDNET 工具使用說明 (繁體中文)	8
3. MDNET 工具使用说明 (简体中文)	15

1. MDNET Tools Operation Manual (English)

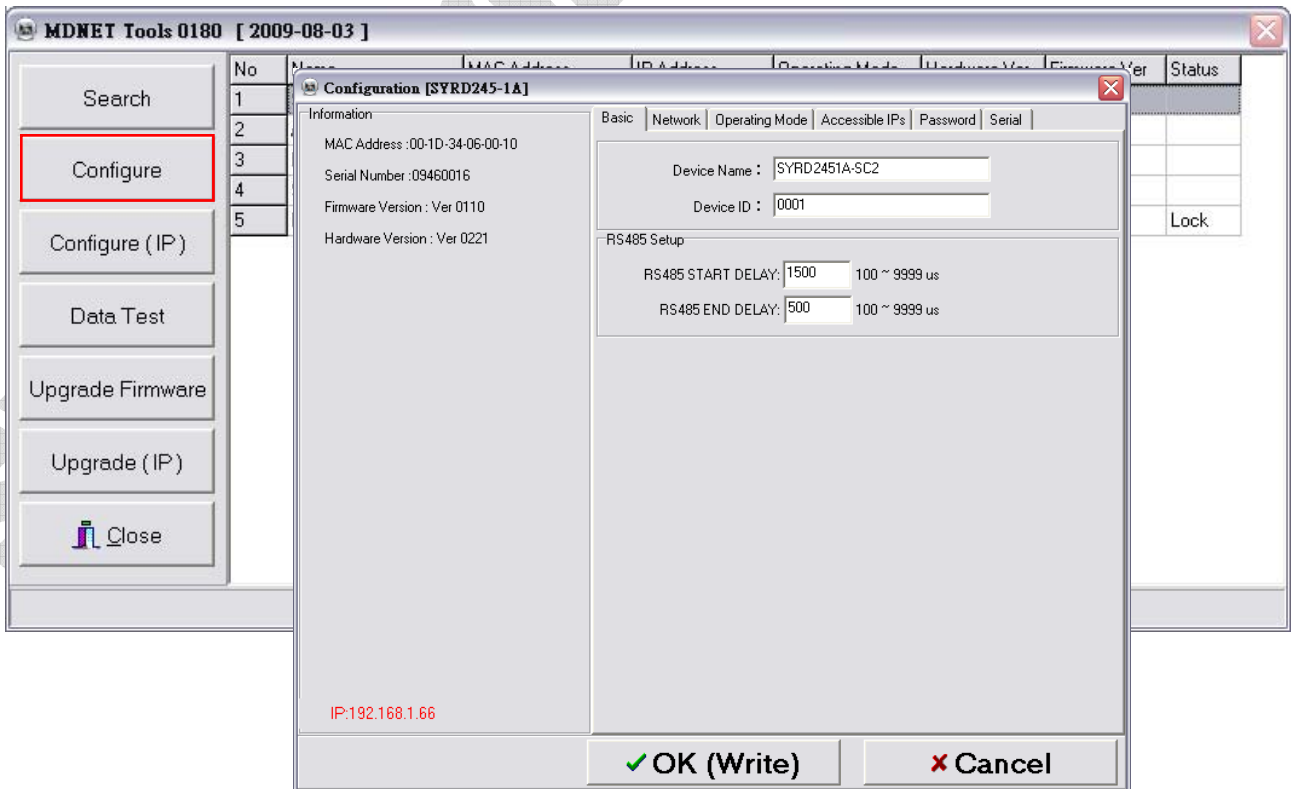
■ Search Device

Run MDNET_Tools then click **Search** to search device.



■ Configure

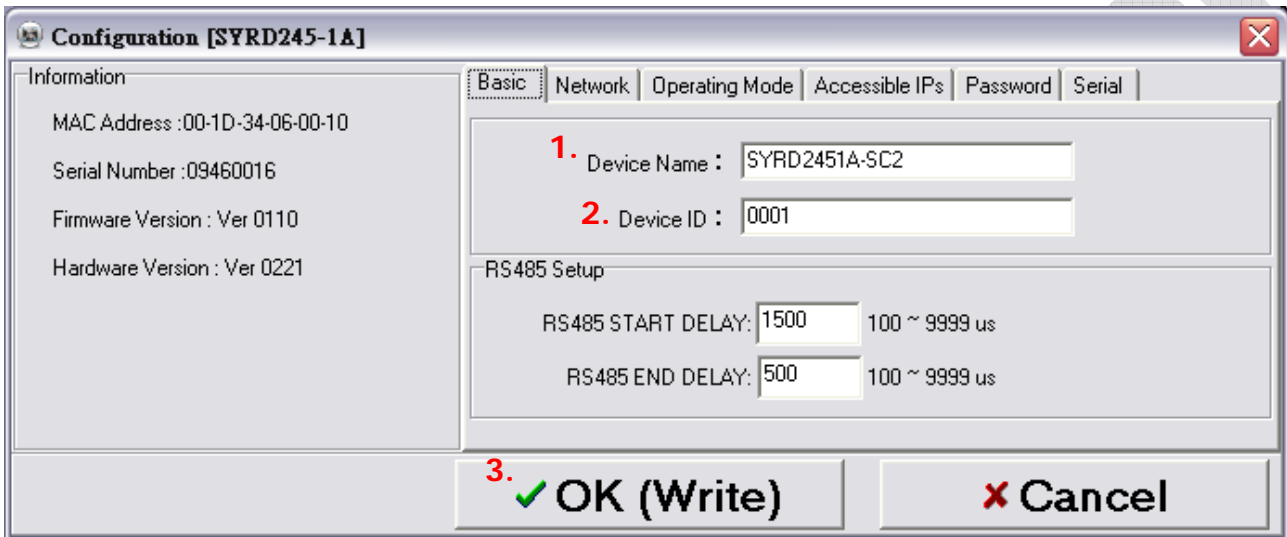
Double click device in db grid or select device then click **Configure** to switch into Configuration mode.



■ **Configuration-Basic**

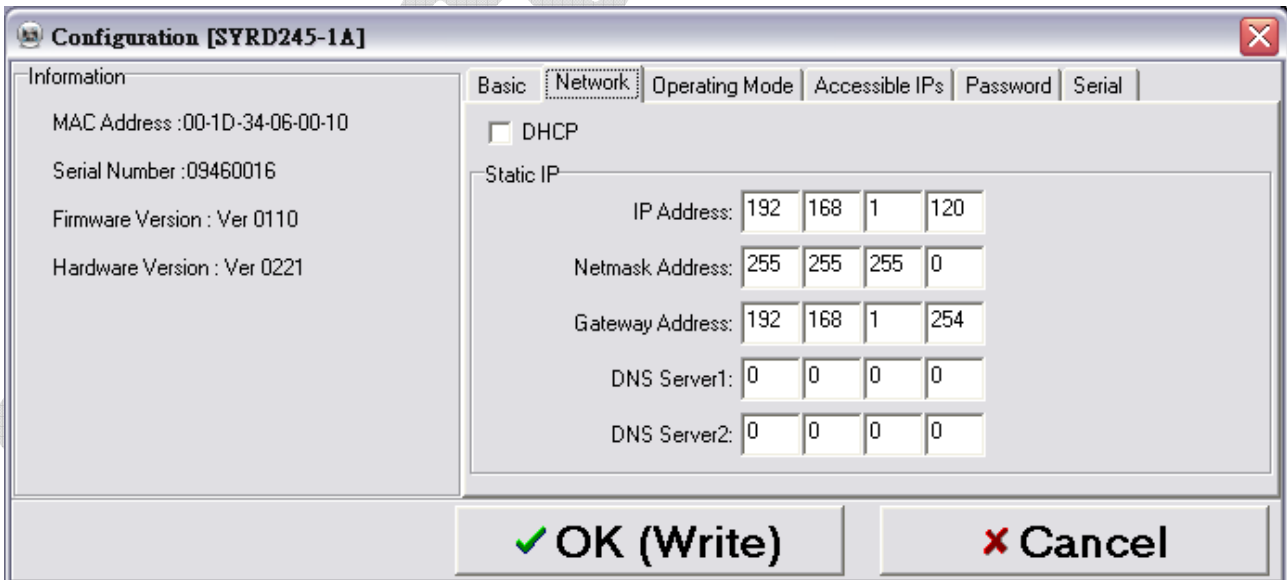
1. Enter the device caption into the field of **Device Name**.
2. Enter the ID into the field of **Device ID**.
3. Check all the setting then click **OK(Write)** to write data into the device.

RS485 Setup : Set the delay time for start/end, it is workable when device with RS485.



■ **Configuration-Network**

Choose **DHCP** or setup the IP information.



■ **Configuration-Operating Mode**

1. **TCP Server Mode** : Setup Local Port. The number of Max Connection is up to 4.

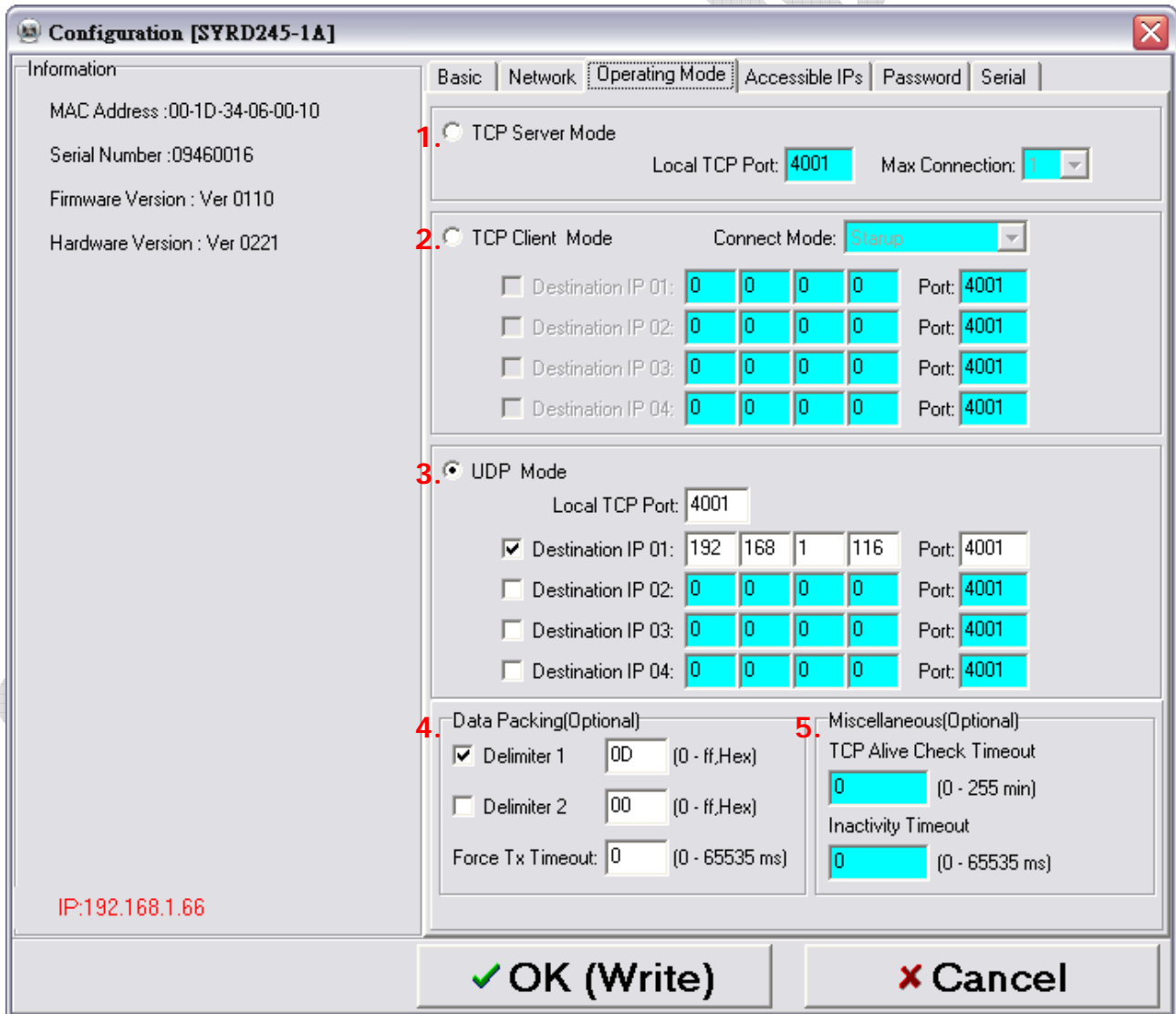
2. **TCP Client Mode** : The modes can be set as Any Character or Star up. The number of IP setting is up to 4.

3. **UDP Mod** : Setup Local Port. The number of IP setting is up to 4.

4. **Data Packing** : Setup data packing (The device will send the message while receiving specified character). Force Tx Timeout : The device will send the message after the setting time while without getting specified character.

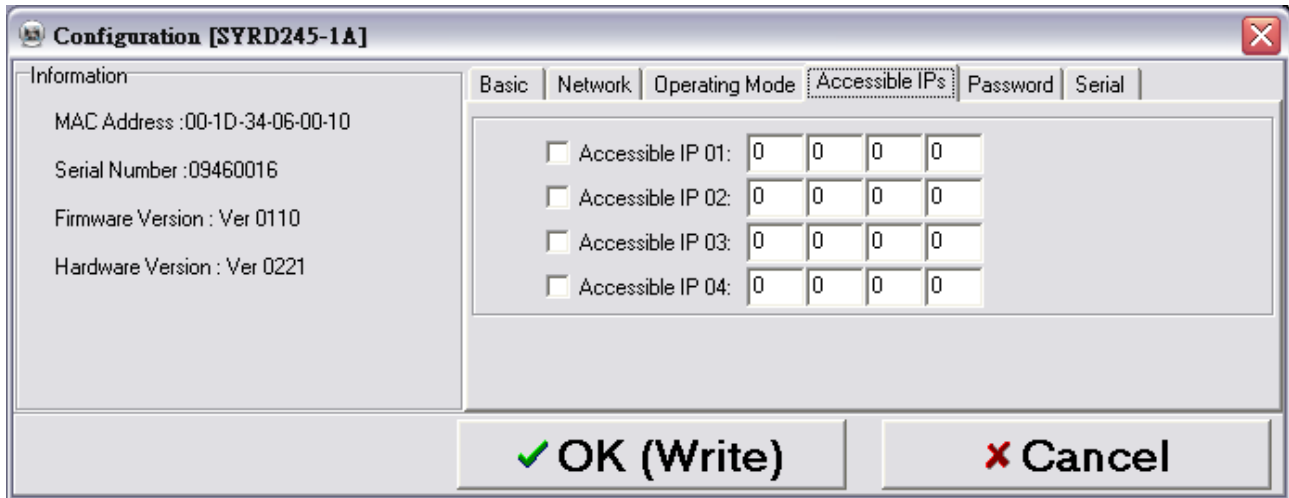
5. **Miscellaneous** : TCP Alive Check Timeout – The device will break the connection while the time of connection equal the setting of Timeout.

Inactivity Timeout –The device will break the connection while no data transmitted in the setting period.



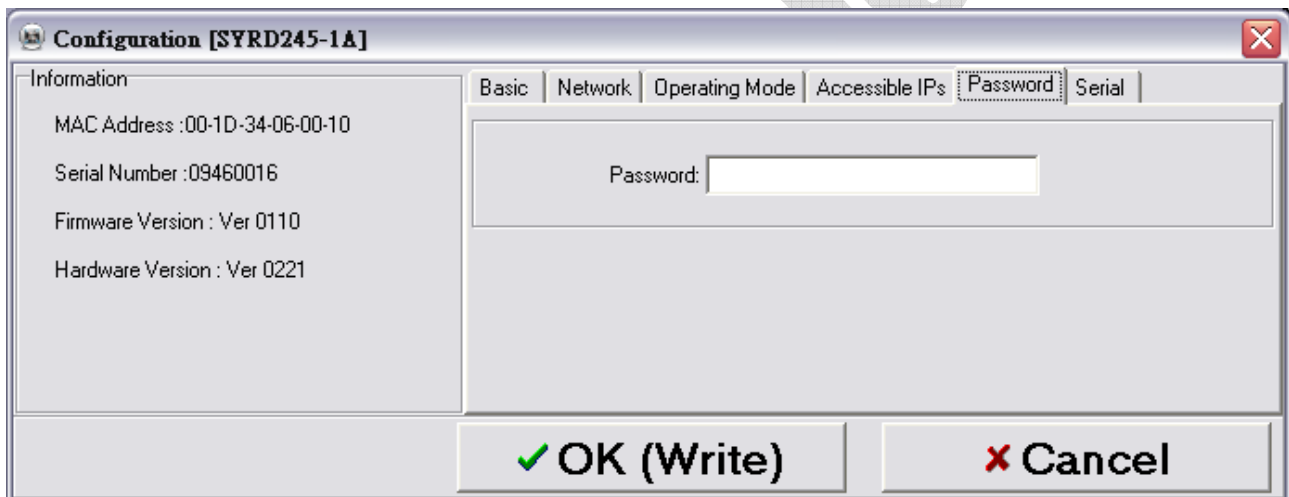
■ **Configuration-Accessible IPs**

The number of IP setting that can be used to access is up to 4.



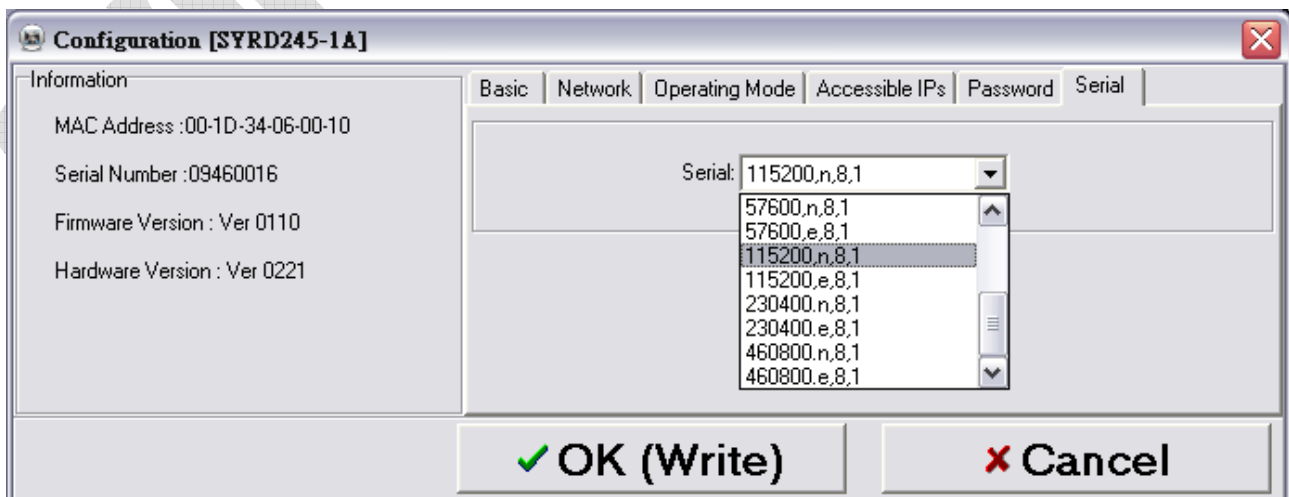
■ **Configuration-Password**

Setup the password that will be used when the user access into control mode.



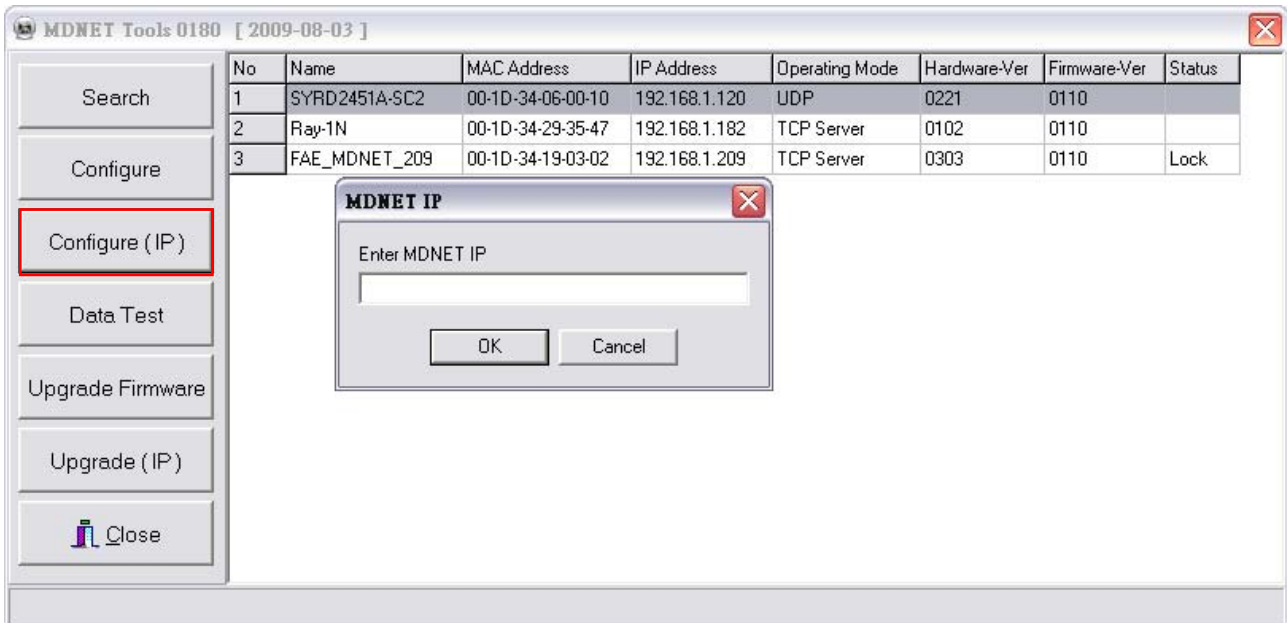
■ **Configuration-Serial**

Setup baud rate.



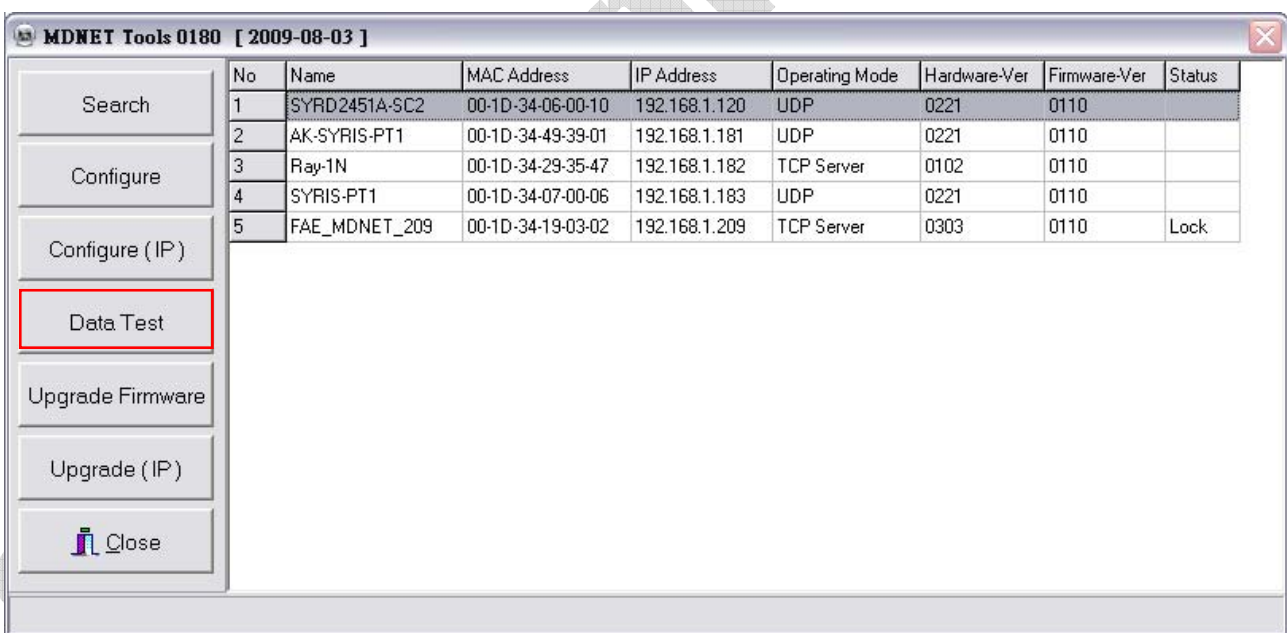
■ **Configure (IP)**

Click **Configure (IP)**, and input MDNET IP (You can input the IP directly, when you can't find the device on the list.)



■ **Data Test**

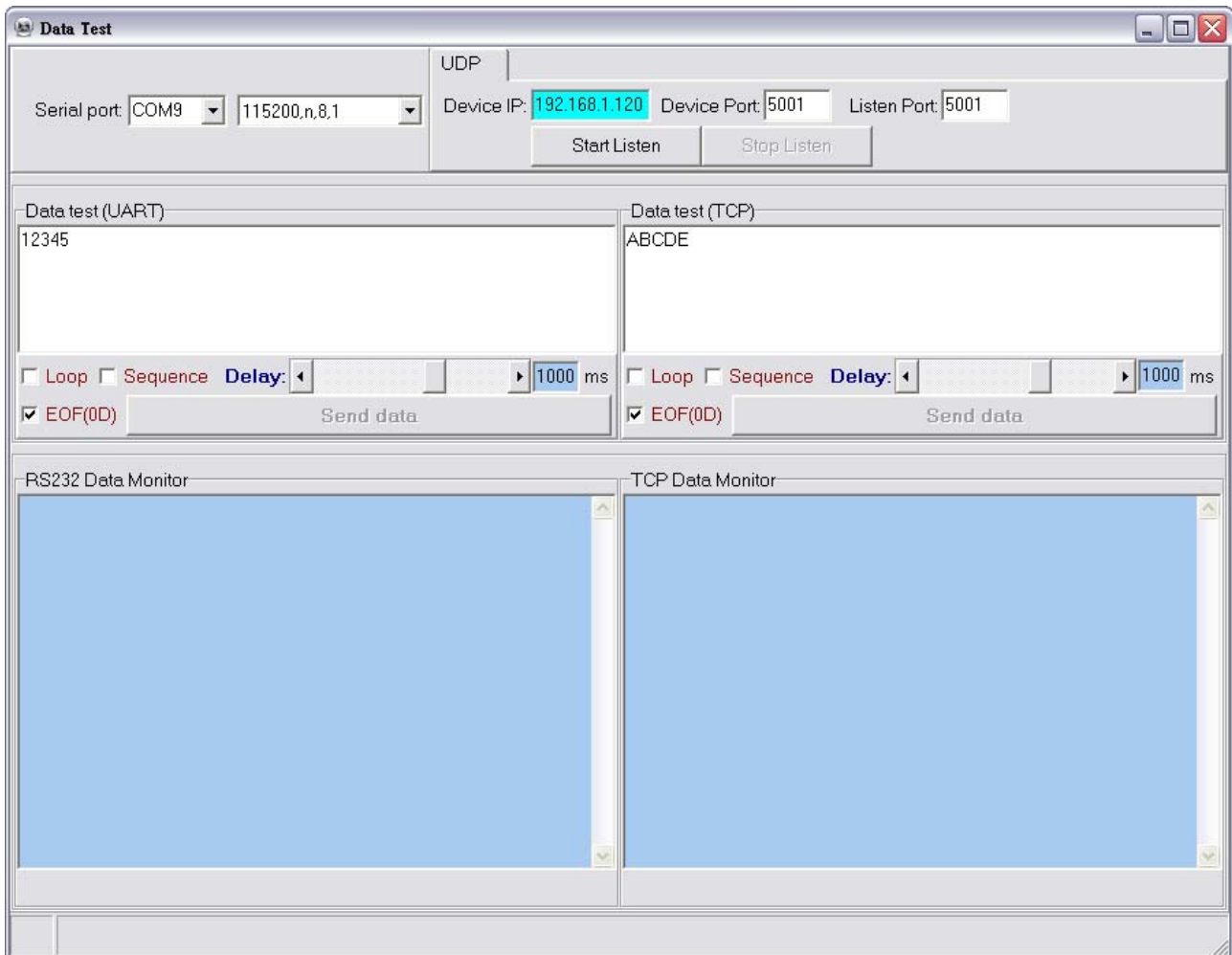
Click **Data Test** to test data transmission.



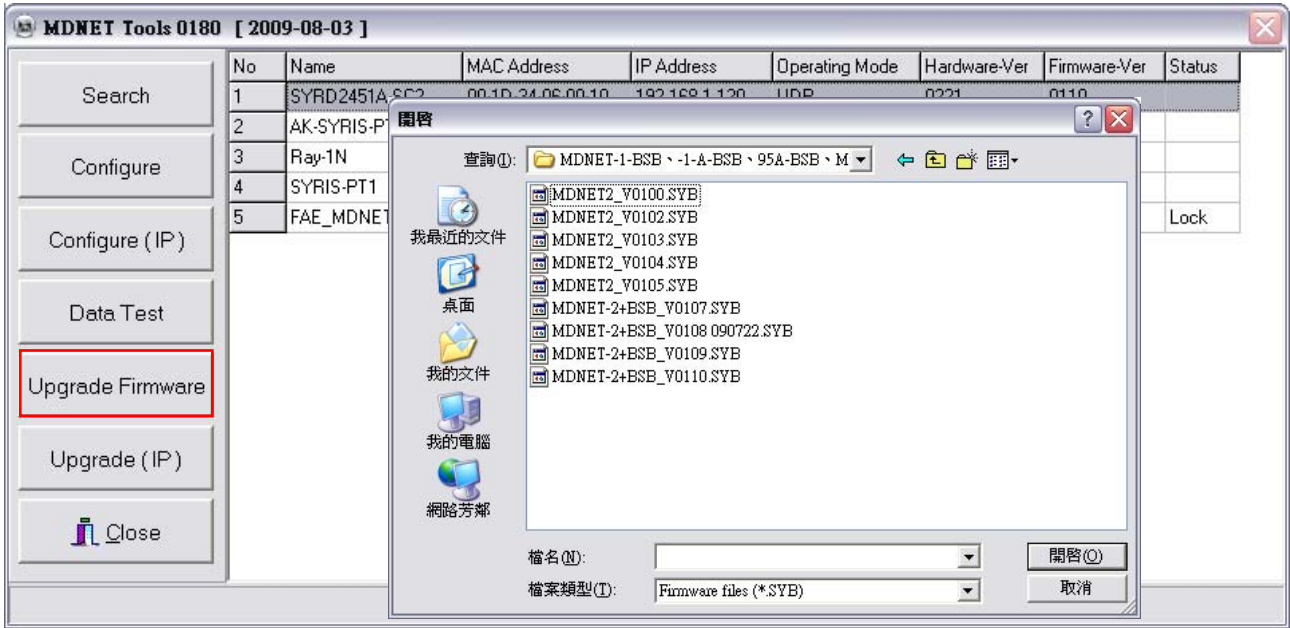
Setup the Port and Baud rate, then click **Start Listen** to connect device.

Check the option of **Loop** to continue transmit message. The bar of **Delay** can set delay time.

Check the option of **Sequence** to add serial number to message.

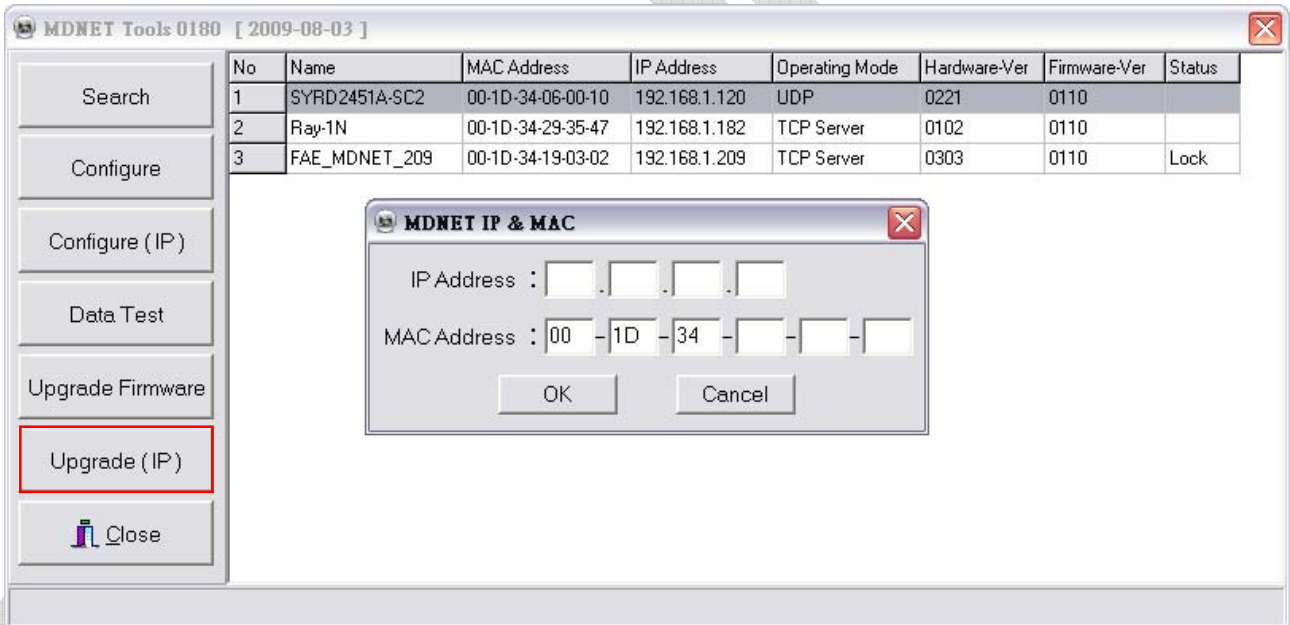


■ Upgrade Firmware



■ Upgrade (IP) : Upgrade firmware by network

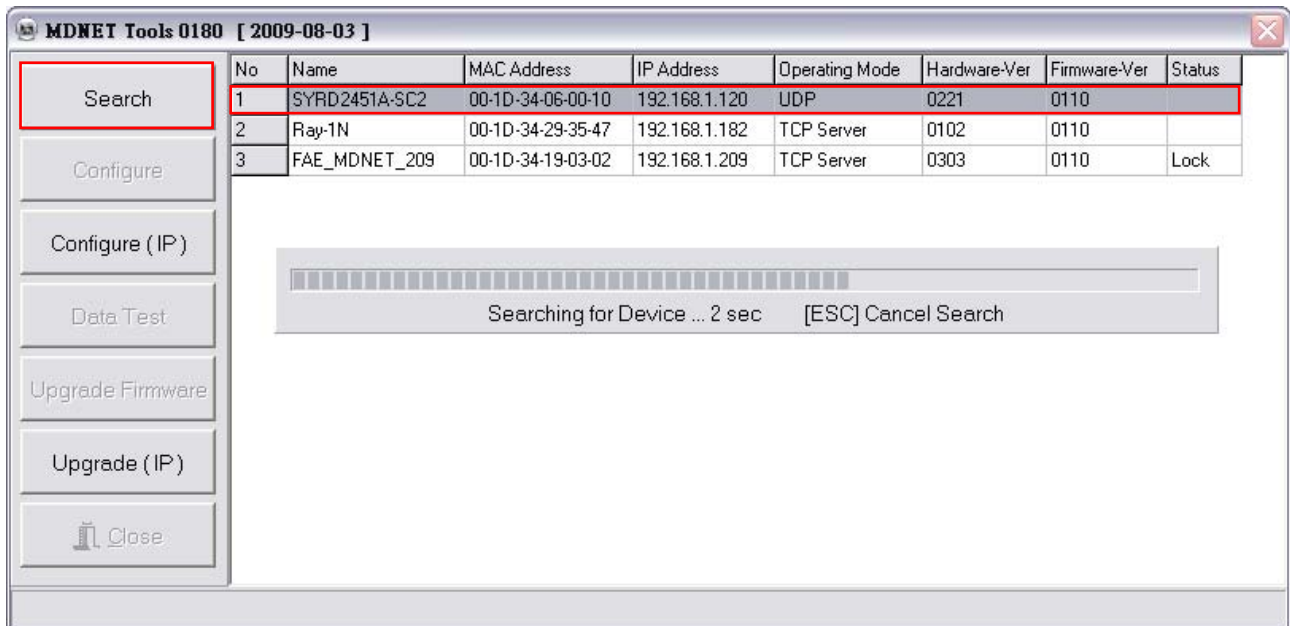
(You can input the IP directly, when you can't find the device on the list.)



2. MDNET 工具使用說明 (繁體中文)

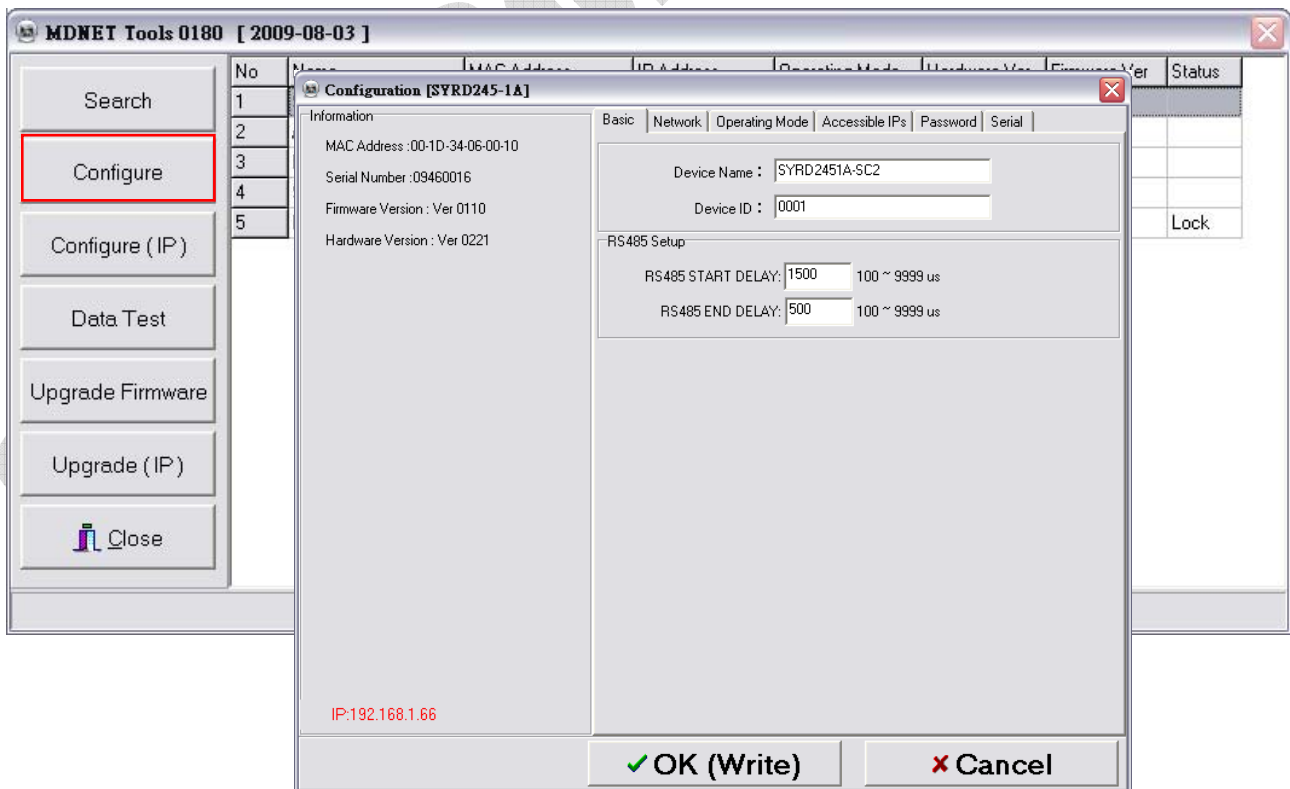
■ 連結裝置

開啓MDNET_Tools後，點選 **Search** 搜尋裝置資料。



■ Configure

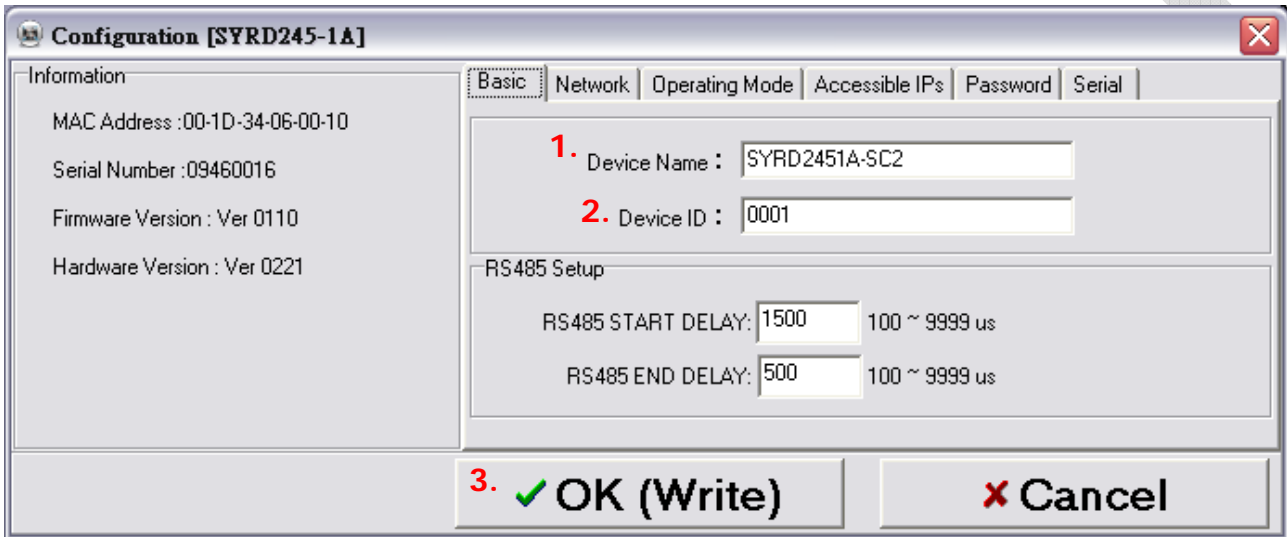
雙擊裝置資料行或是點選 **Configure** 進入控制模式。



■ Configuration-Basic

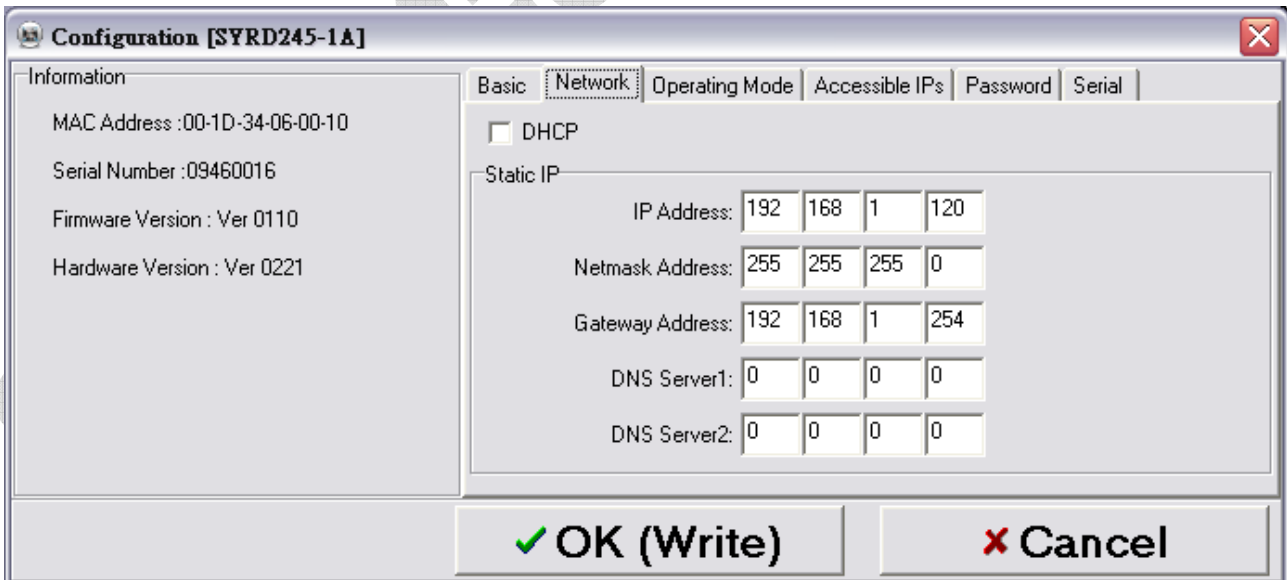
1. 於 **Device Name** 欄位輸入裝置名稱。
2. 於 **Device ID** 欄位輸入設定ID。
3. 確認後點選 **OK(Write)** 寫入。

RS485 Setup：僅於裝置有RS485時方有作用，其為設定傳送/接收的延遲時間。



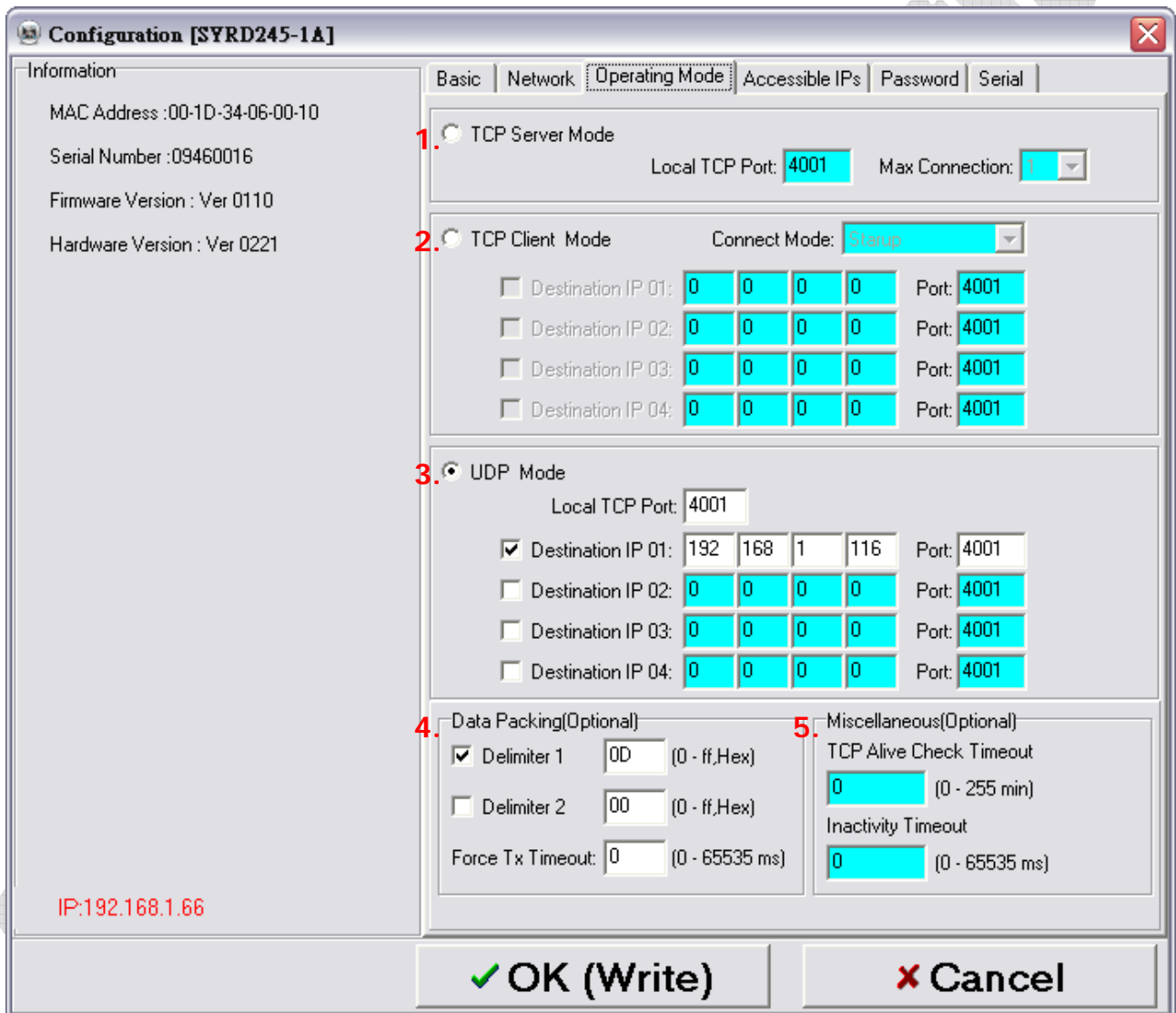
■ Configuration-Network

選擇 **DHCP** 或是設定 IP相關資訊



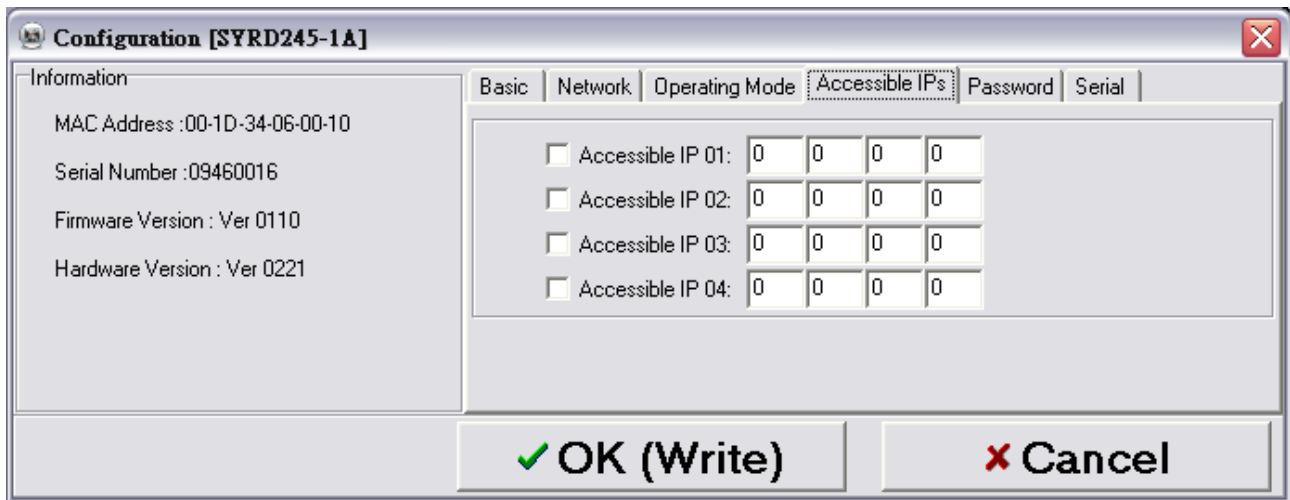
■ Configuration-Operating Mode

1. **TCP Server Mode** : 設定Local Port , Max Connection可達4。
2. **TCP Client Mode** : 可設定Any Character或Star up模式 , 最多可設定四組IP。
3. **UDP Mod** : 設定Local Port , 最多可設定四組IP。
4. **Data Packing** : 設定段落字元 (接收到某特定字元時 , 將傳出該字元前的訊息)
Force Tx Timeout : 如果遲遲未收到指定段落字元 , 則在多久時間後送出訊息。
5. **Miscellaneous** : TCP Alive Check Timeout – 連線達到設定時間後即斷線 ;
Inactivity Timeout – 於設定時間內無資料傳輸(UART)即斷線。



■ Configuration-Accessible IPs

可設定四組擁有存取權限的IP。



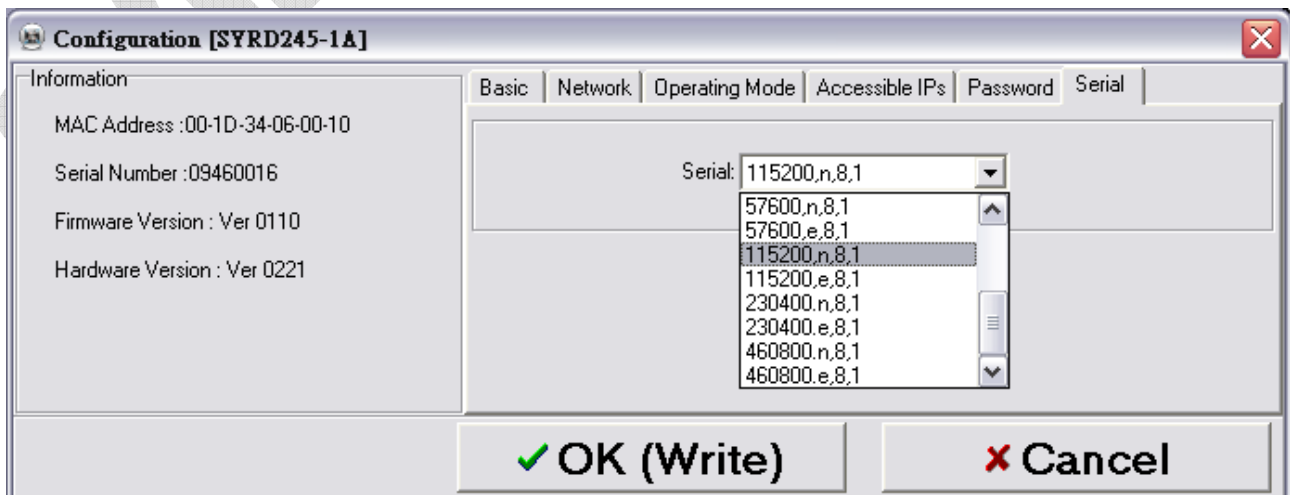
■ Configuration-Password

設定進入控制模式時候的密碼。



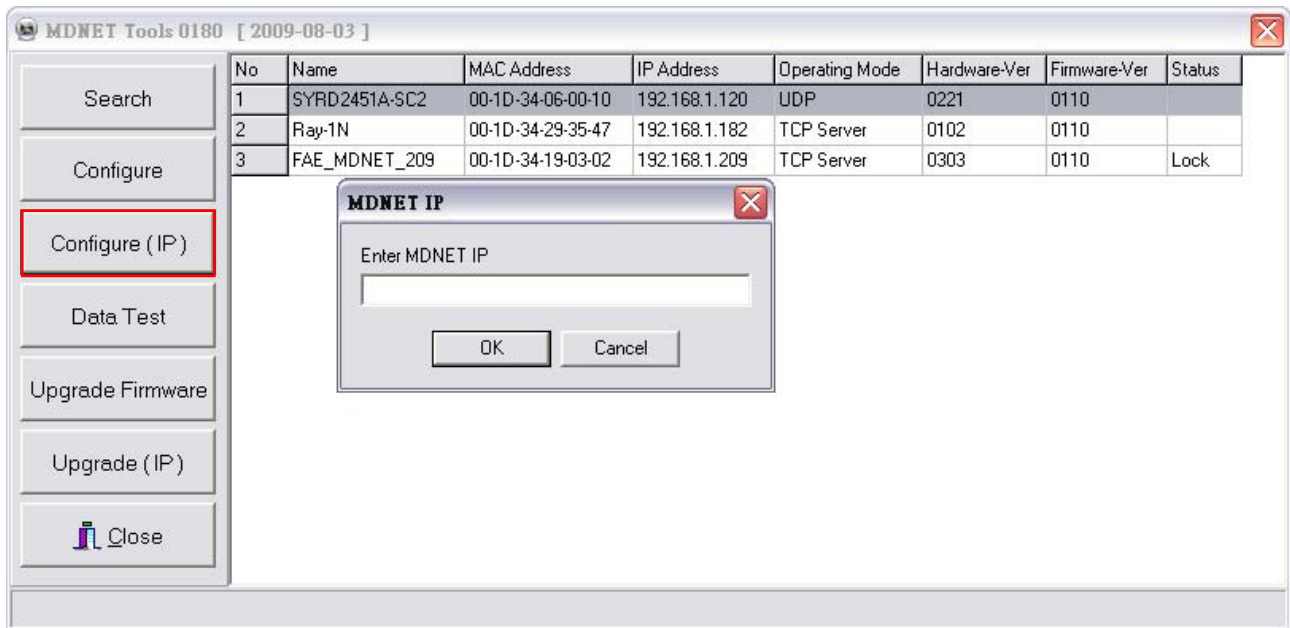
■ Configuration-Serial

設定速率。



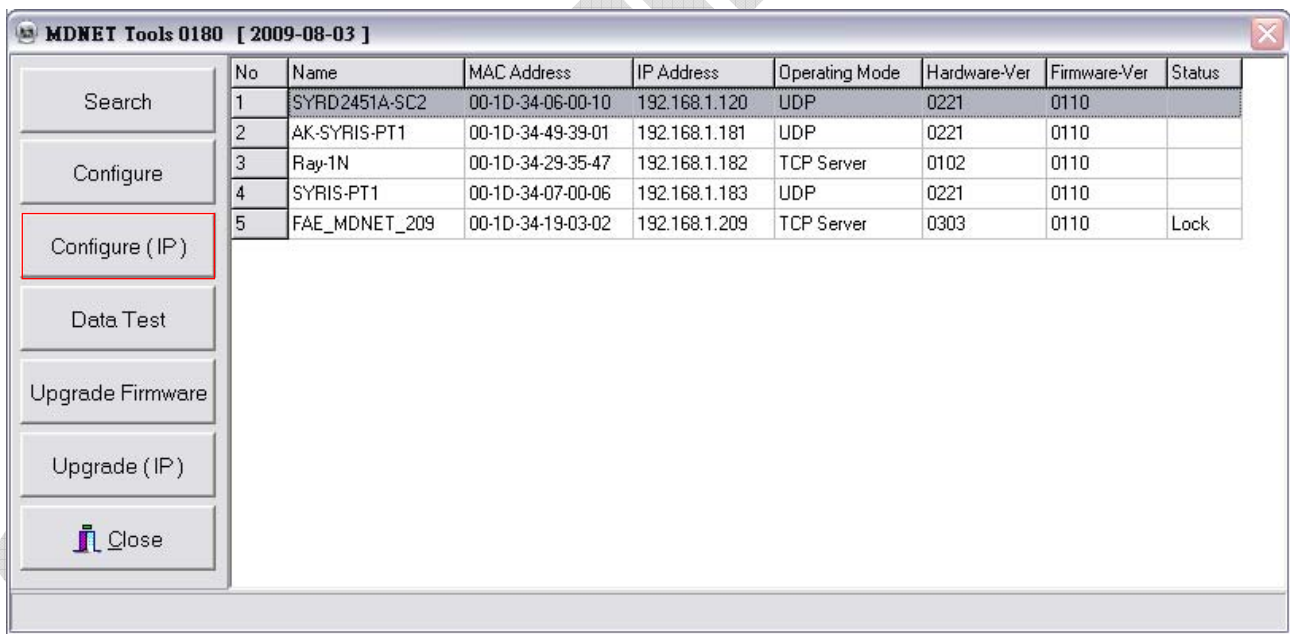
■ **Configure (IP)**

點選 **Configure (IP)** 開啓IP視窗，於此輸入MDNET IP (搜尋不到裝置時，使用此方法直接輸入IP即可)。



■ **Data Test**

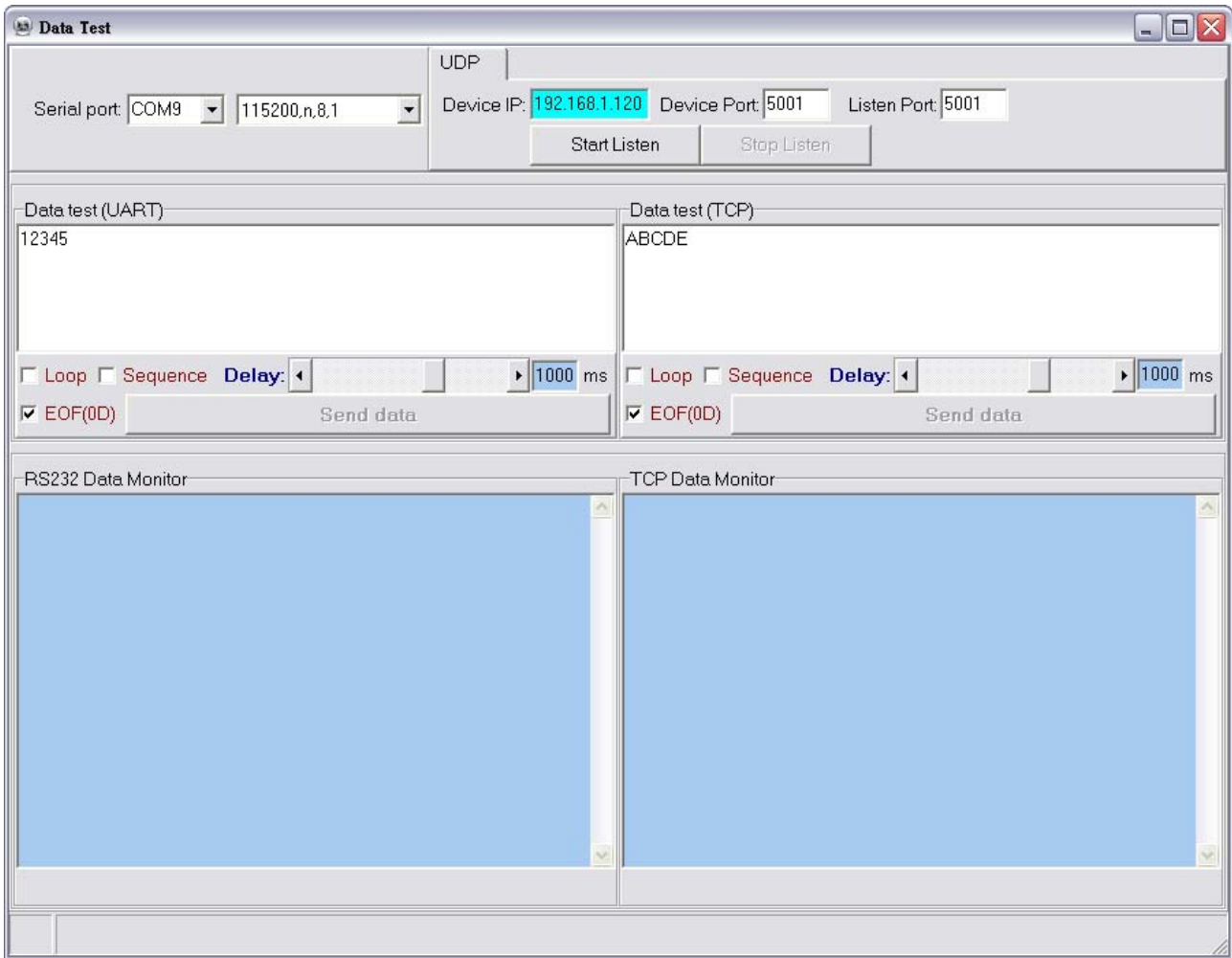
點選 **Data Test** 開啓資料傳輸測試。



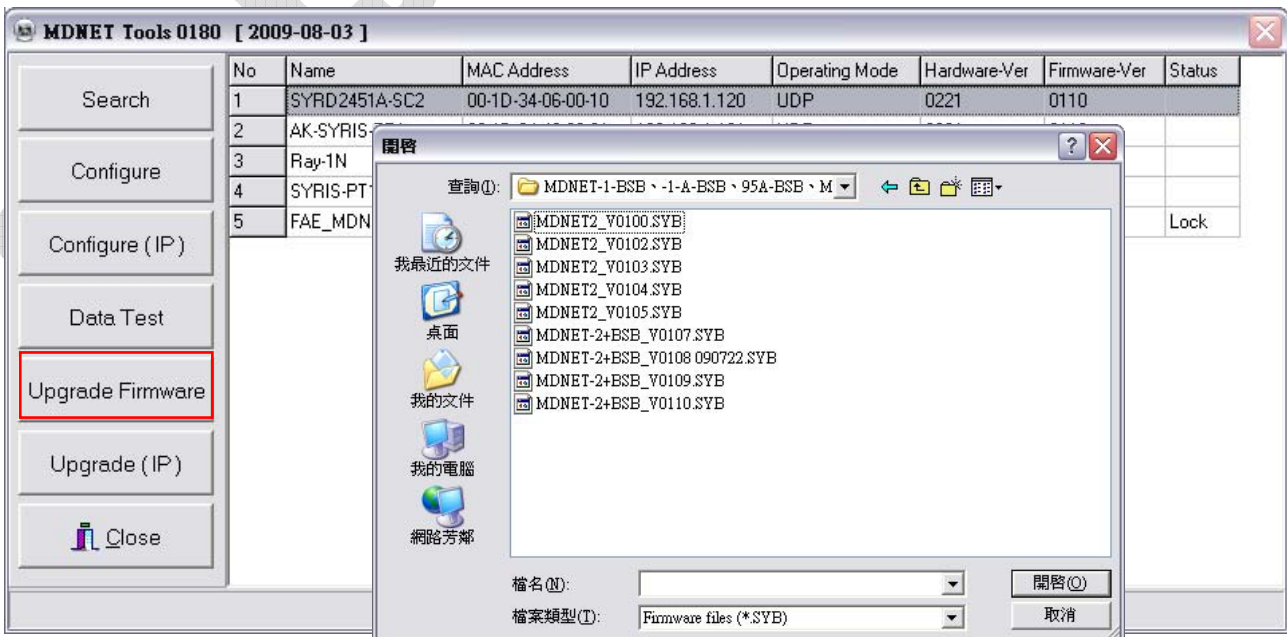
設定與欲連線的Port與速率，點選 **Start Listen** 連線裝置。

點選 **Loop** 可連續傳送訊息，於**Delay**部分設定時間。

點選 **Sequence** 則會在傳送的訊息前加上序號。

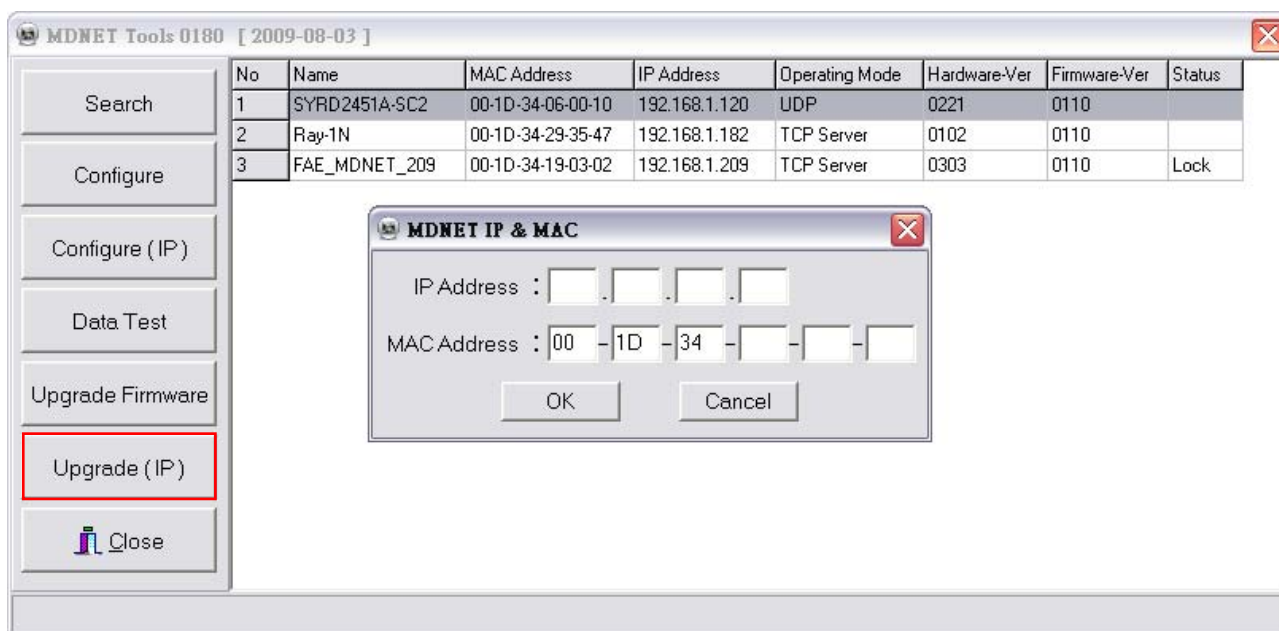


■ Upgrade Firmware : 更新韌體



■ Upgrade (IP) : 使用IP更新韌體

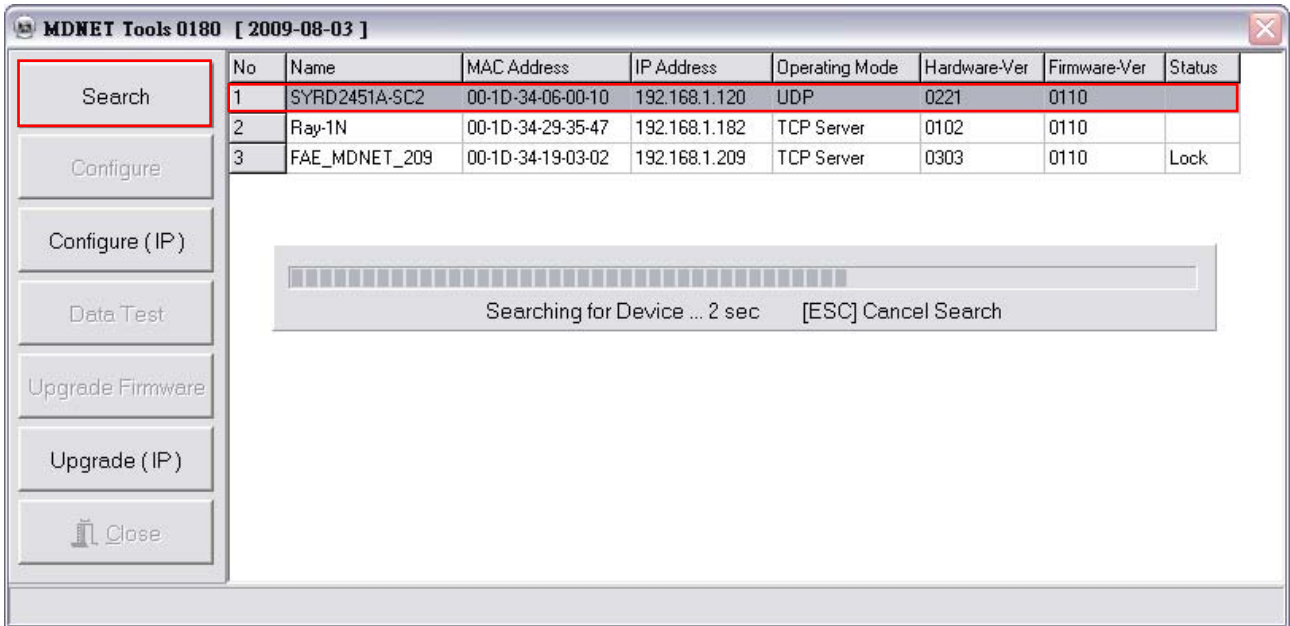
(搜尋不到裝置時，使用此方法直接輸入IP即可)



3. MDNET 工具使用说明 (简体中文)

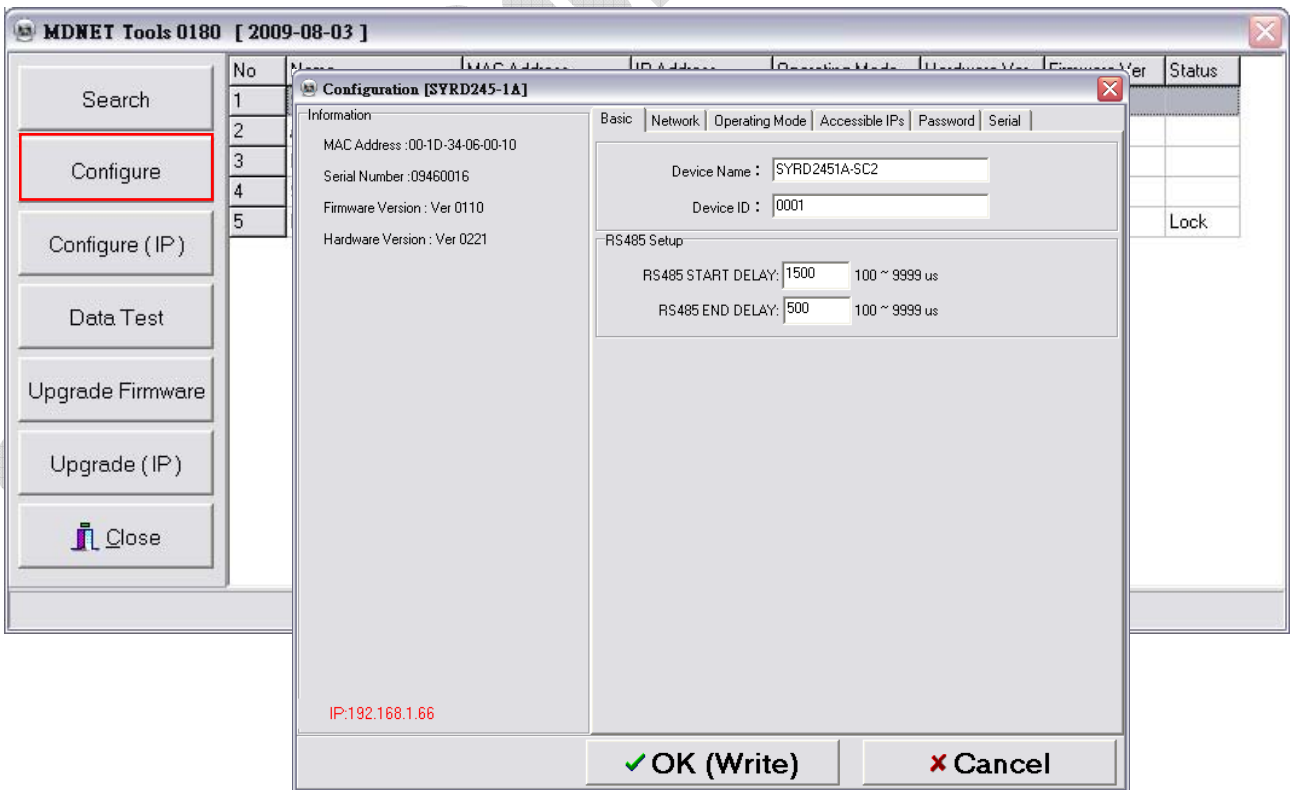
■ 连结装置

开启MDNET_Tools后，点选 **Search** 搜寻装置数据。



■ Configure

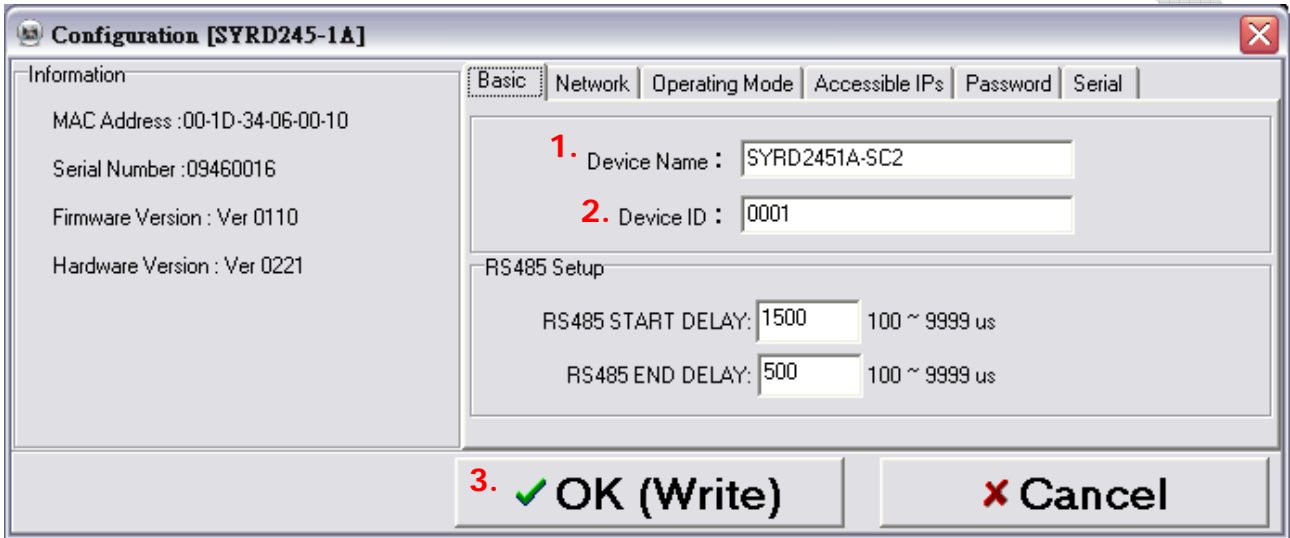
双击装置数据行或是点选 **Configure** 进入控制模式。



■ Configuration-Basic

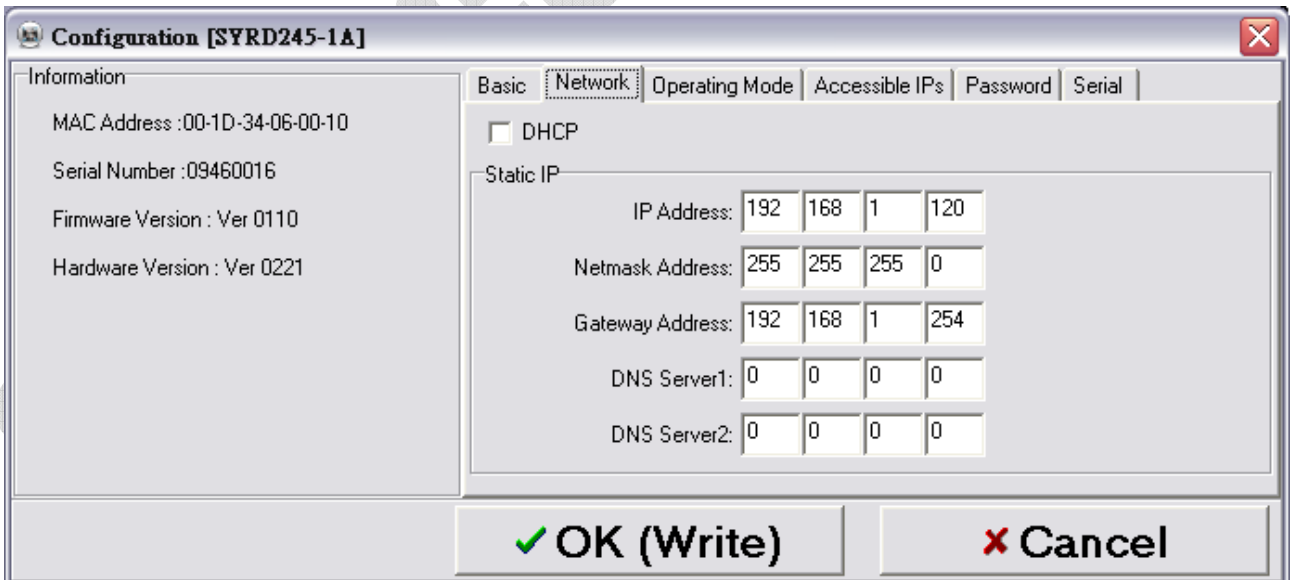
1. 于 **Device Name** 字段输入装置名称。
2. 于 **Device ID** 字段输入设定ID。
3. 确认后点选 **OK(Write)** 写入。

RS485 Setup: 仅于装置有RS485时方有作用，其为设定传送/接收的延迟时间。



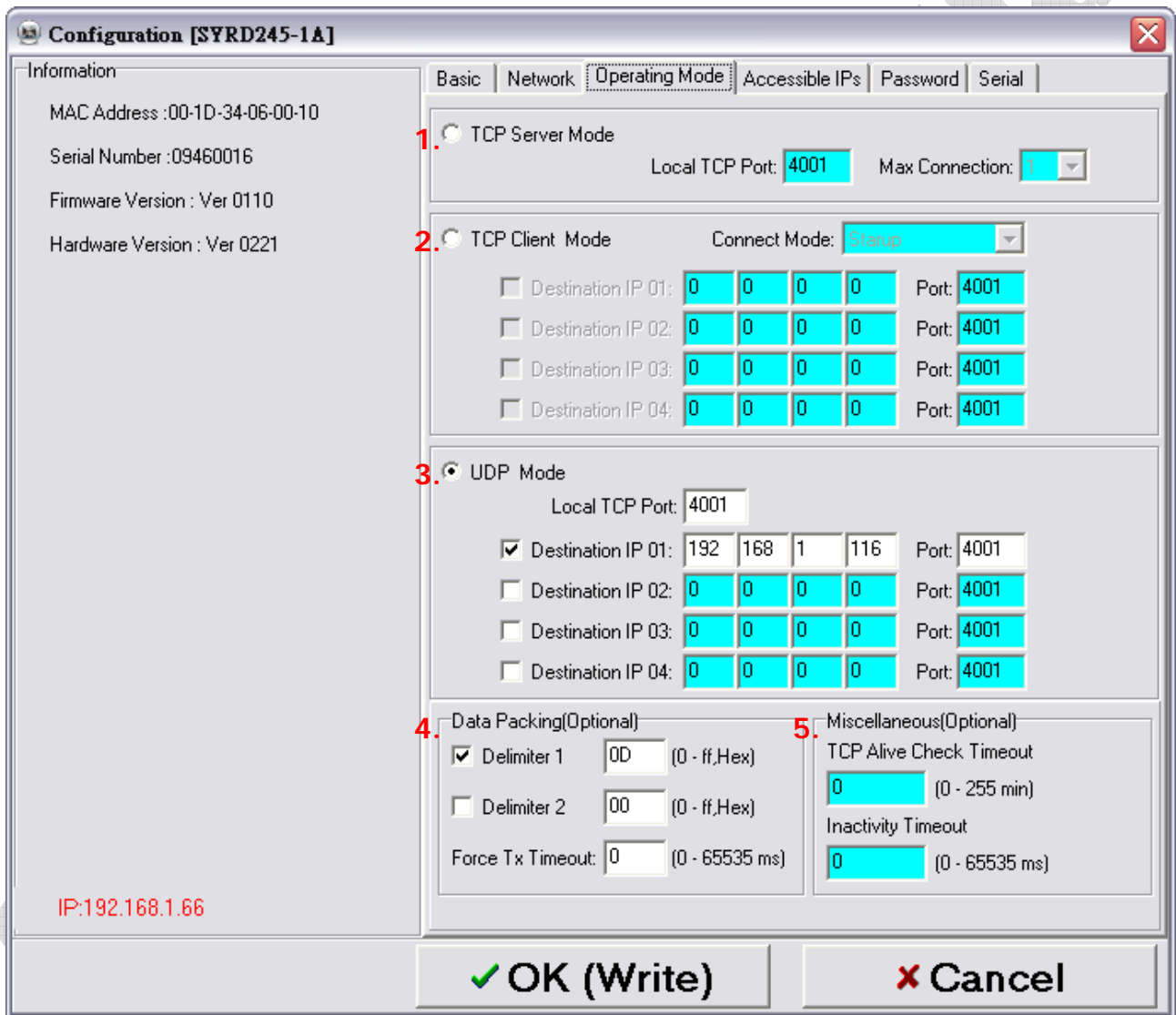
■ Configuration-Network

选择 **DHCP** 或是设定 IP相关信息



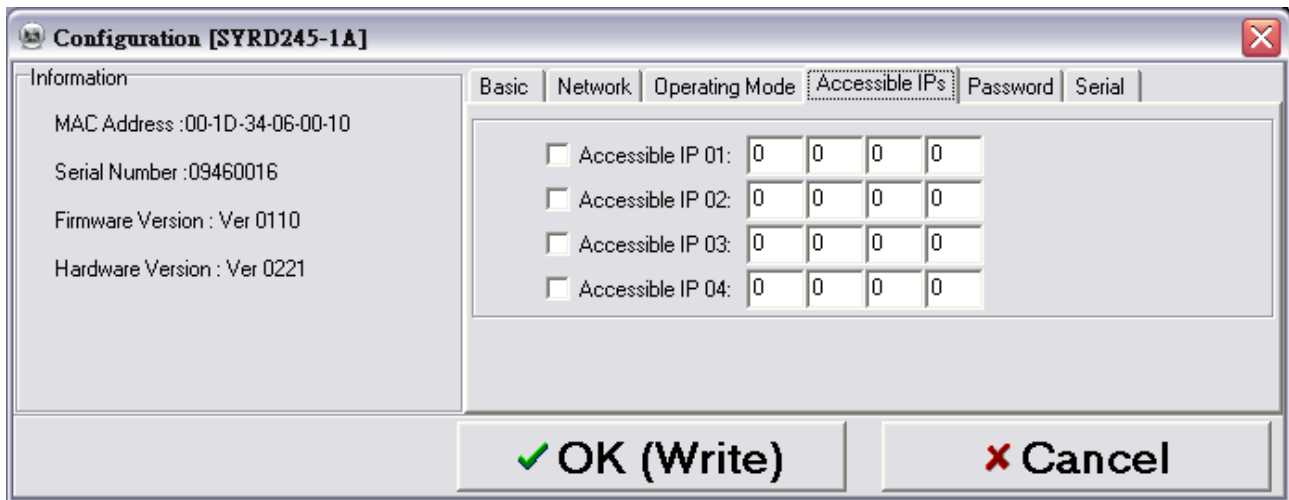
■ Configuration-Operating Mode

1. **TCP Server Mode:** 设定Local Port, Max Connection可达4。
2. **TCP Client Mode:** 可设定Any Character或Star up模式, 最多可设定四组IP。
3. **UDP Mod:** 设定Local Port, 最多可设定四组IP。
4. **Data Packing:** 设定段落字符 (接收到某特定字符时, 将传出该字符前的讯息)
Force Tx Timeout: 如果迟迟未收到指定段落字符, 则在多久时间后送出讯息。
5. **Miscellaneous:** TCP Alive Check Timeout—联机达到设定时间后即断线;
Inactivity Timeout—于设定时间内无数据传输(UART)即断线。



■ Configuration-Accessible IPs

可设定四组拥有存取权限的IP。



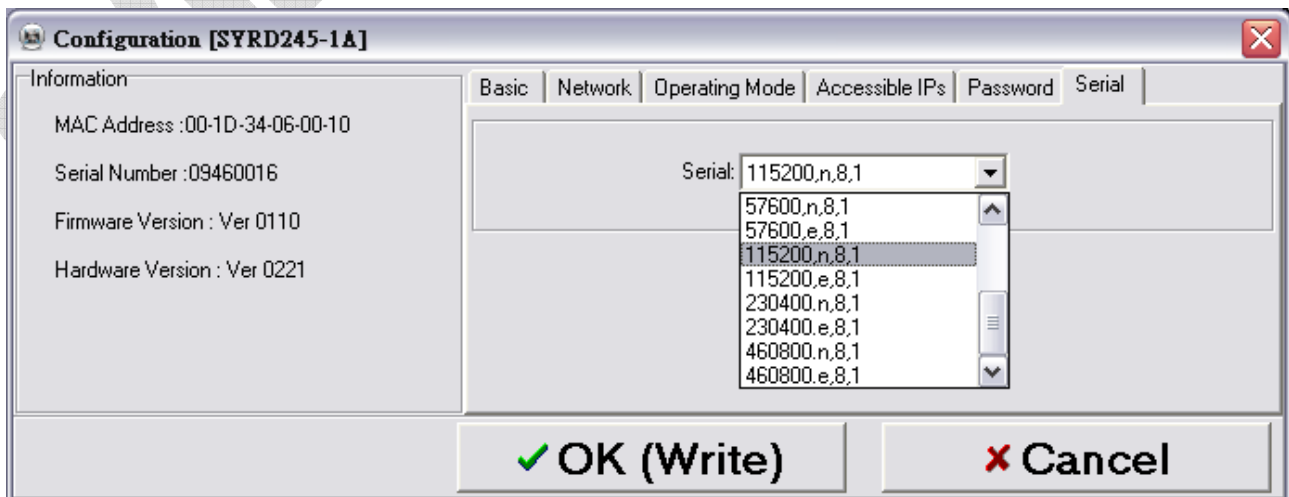
■ Configuration-Password

设定进入控制模式时候的密码。



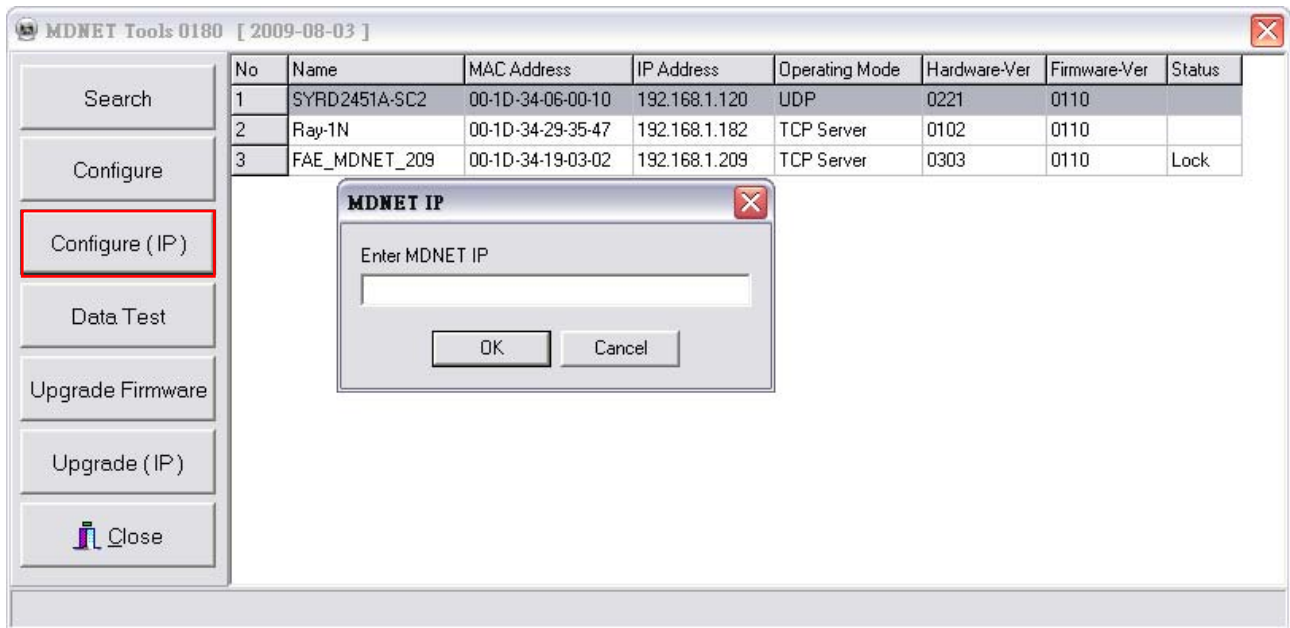
■ Configuration-Serial

设定速率。



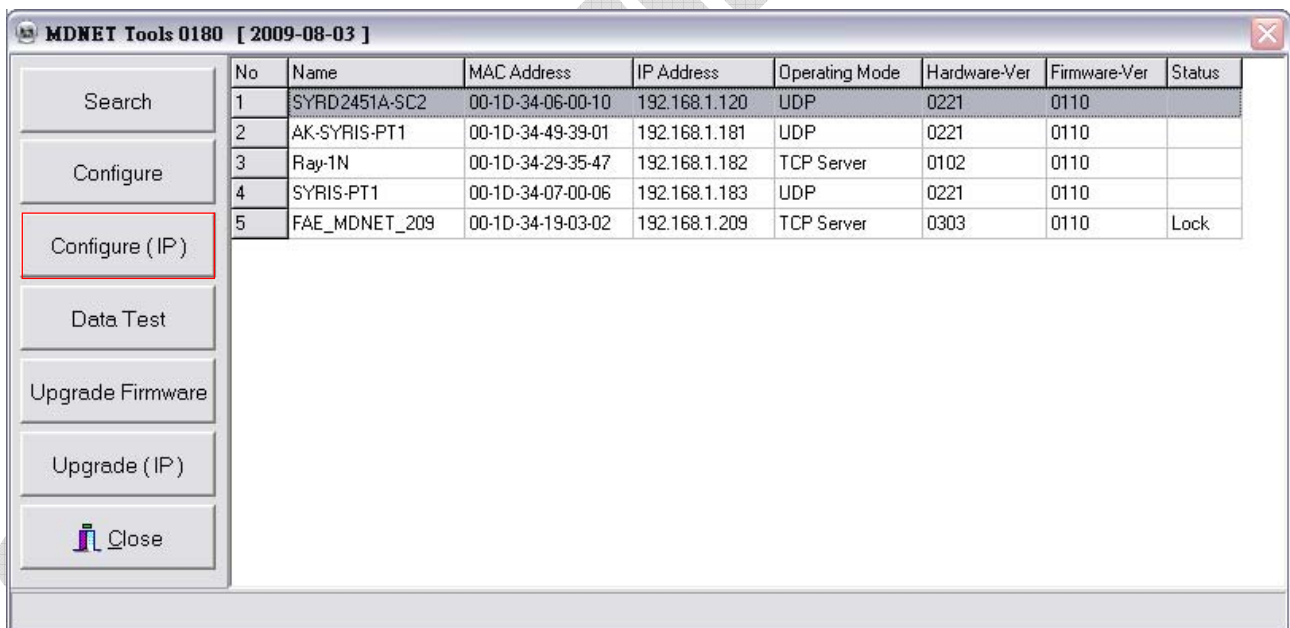
■ Configure (IP)

点选 **Configure (IP)** 开启IP窗口，于此输入MDNET IP (搜寻不到装置时，使用此方法直接输入IP即可)。



■ Data Test

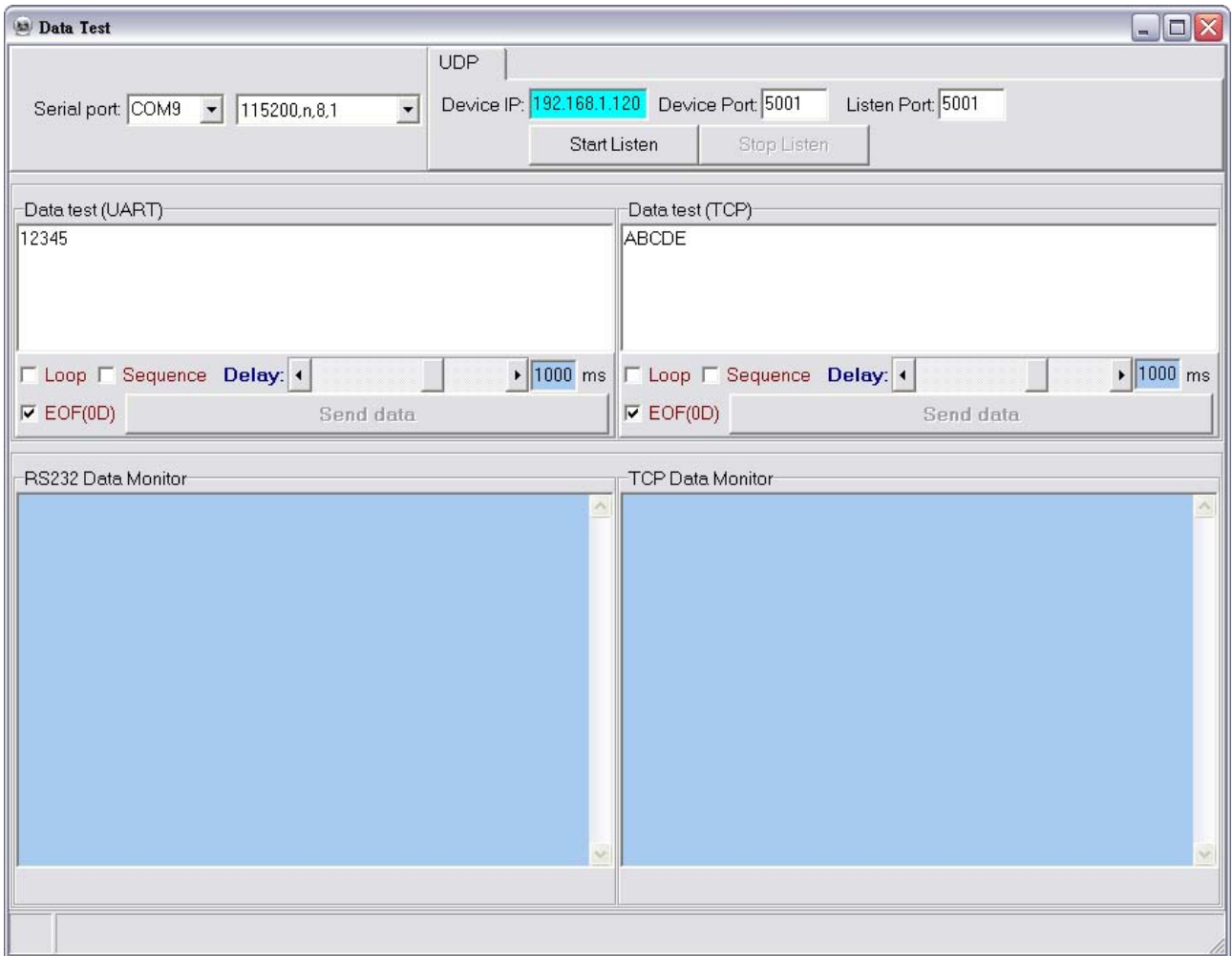
点选 **Data Test** 开启数据传输测试。



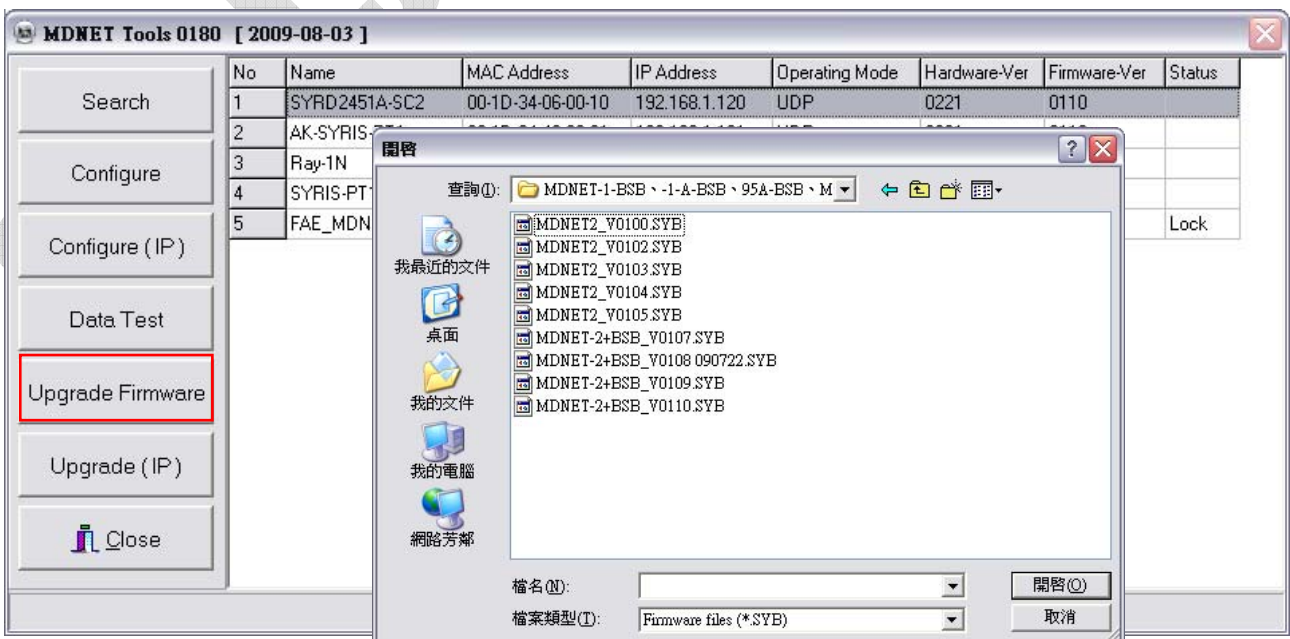
设定与欲联机的Port与速率，点选 **Start Listen** 联机装置。

点选 **Loop** 可连续传送讯息，于**Delay**部分设定时间。

点选 **Sequence** 则会在传送的讯息前加上序号。



■ Upgrade Firmware: 更新韧体



■ Upgrade (IP): 使用IP更新韧体

(搜寻不到装置时，使用此方法直接输入IP即可)

