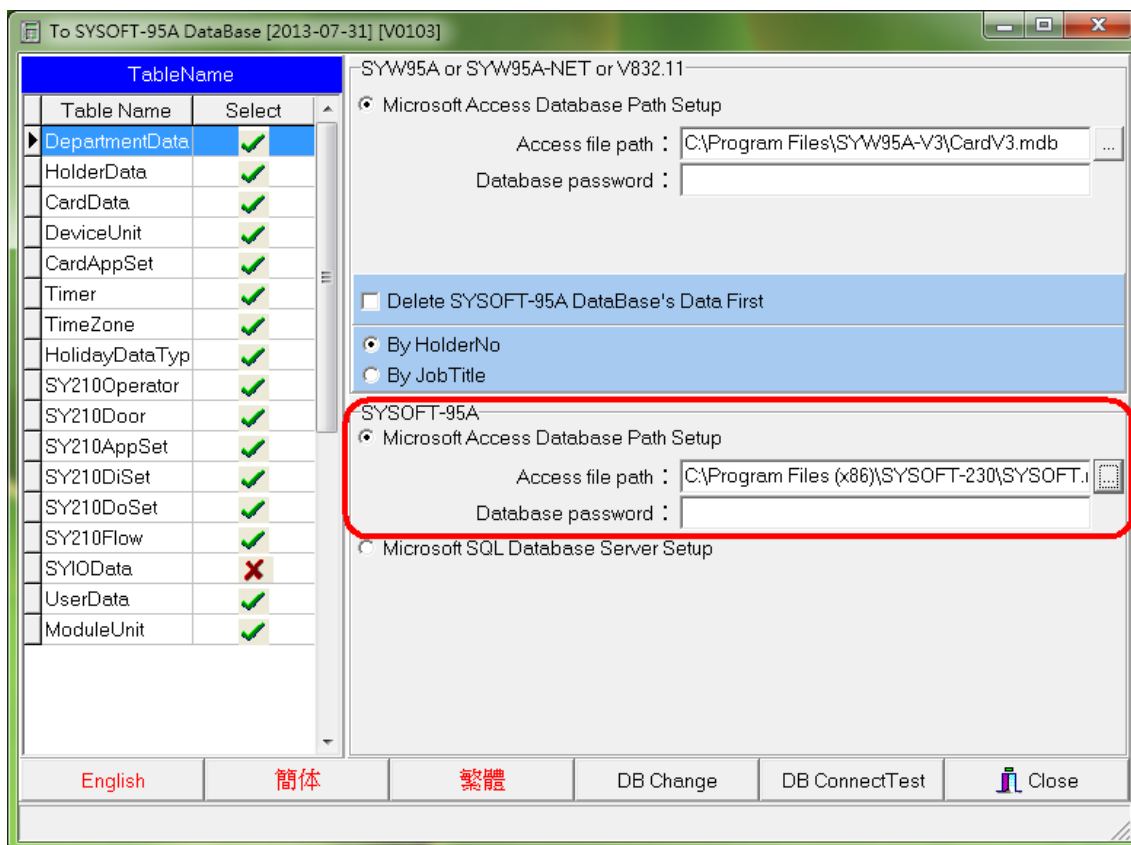
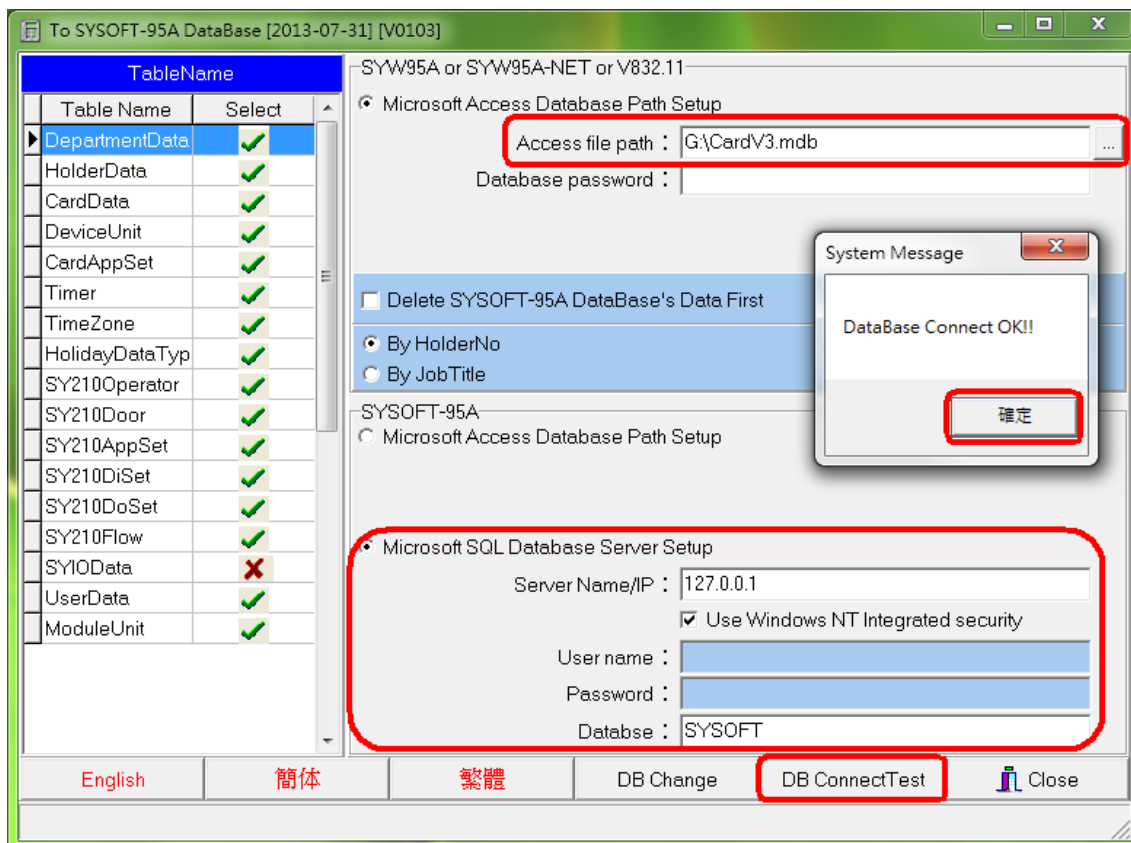


Scenario A:

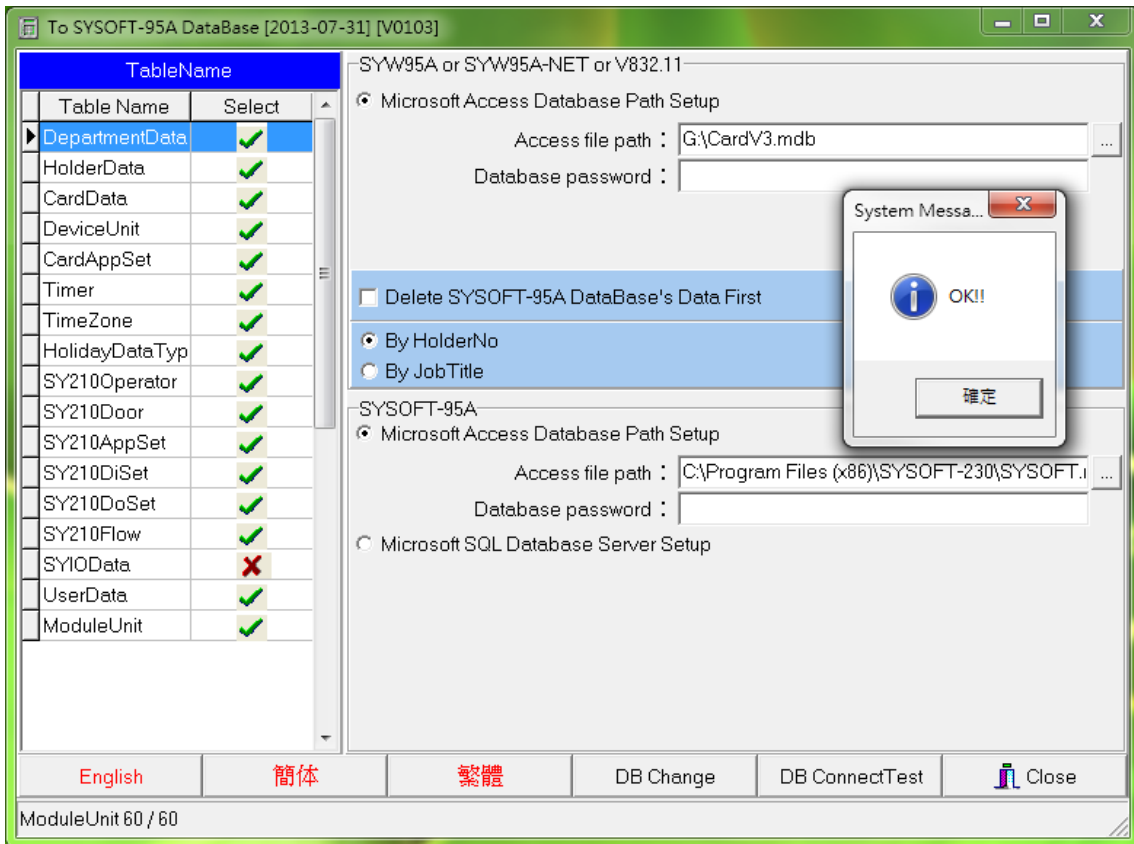
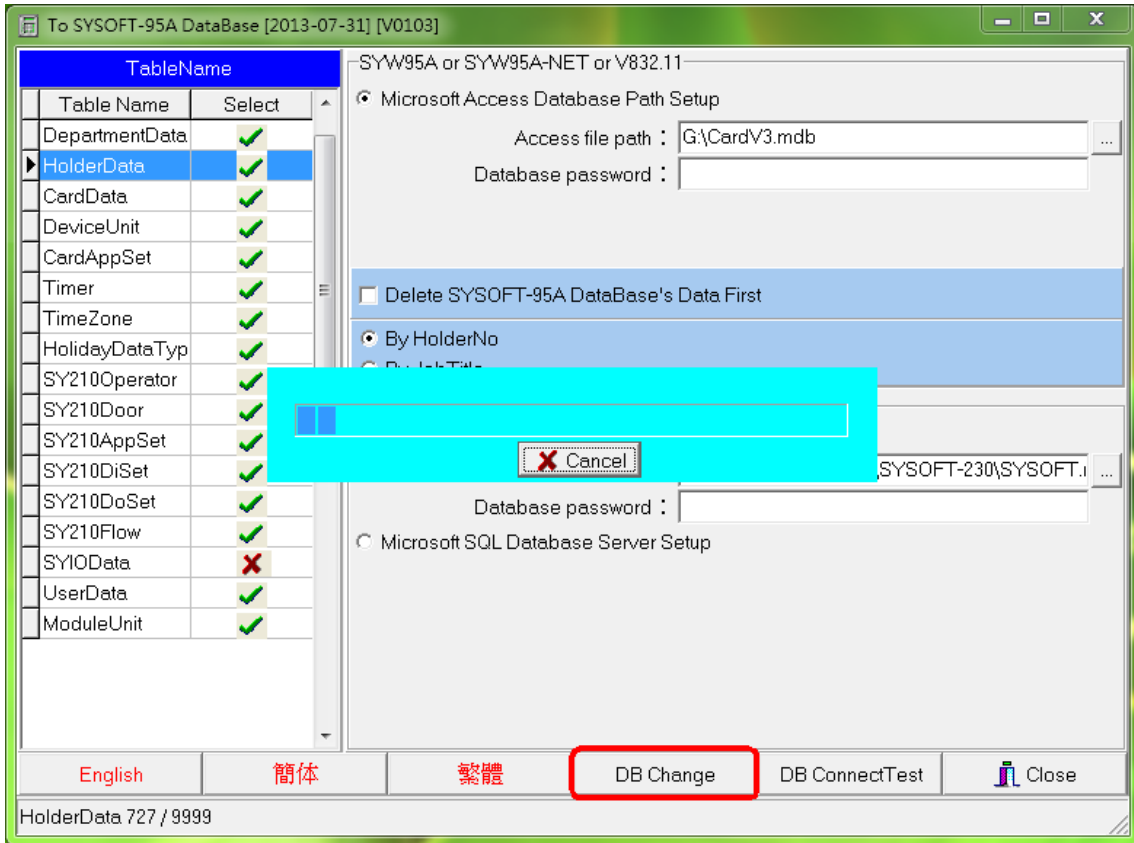
MS-Access to MS-Access



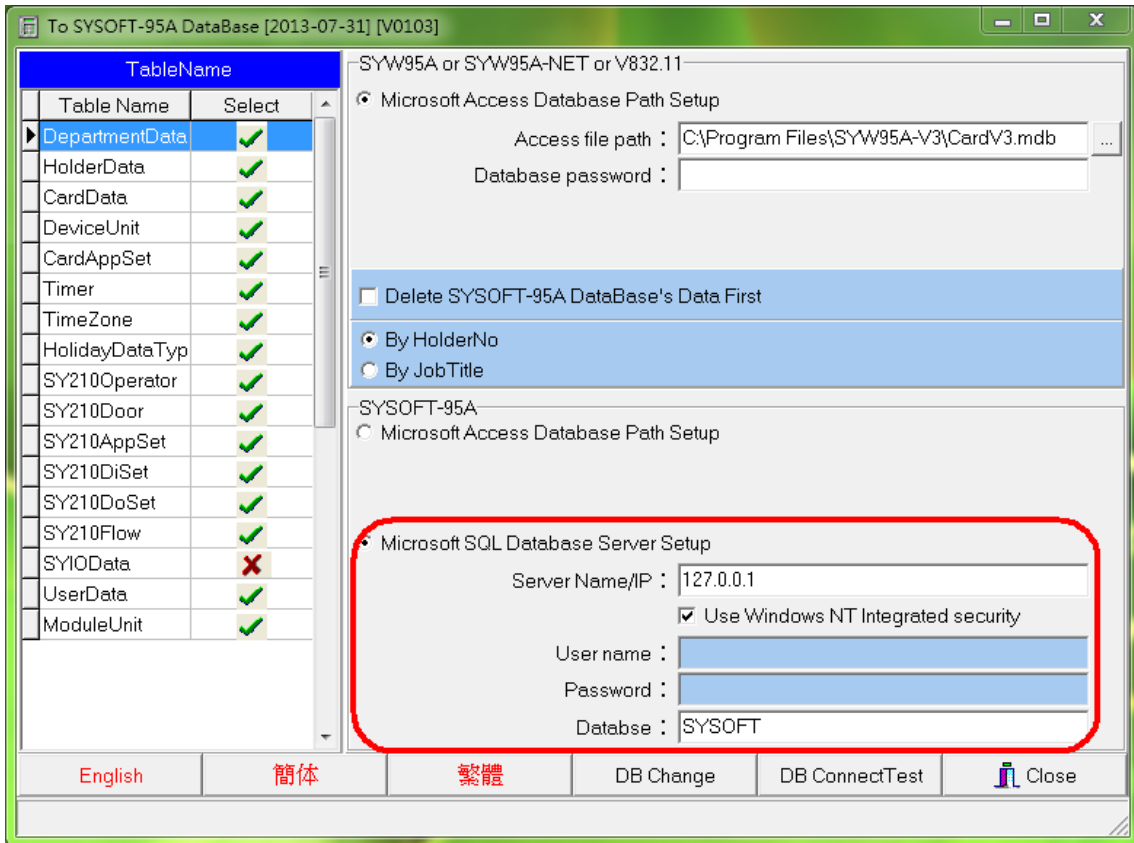
We can copy CardV3.mdb to any disk. The example is put db file to disk G.



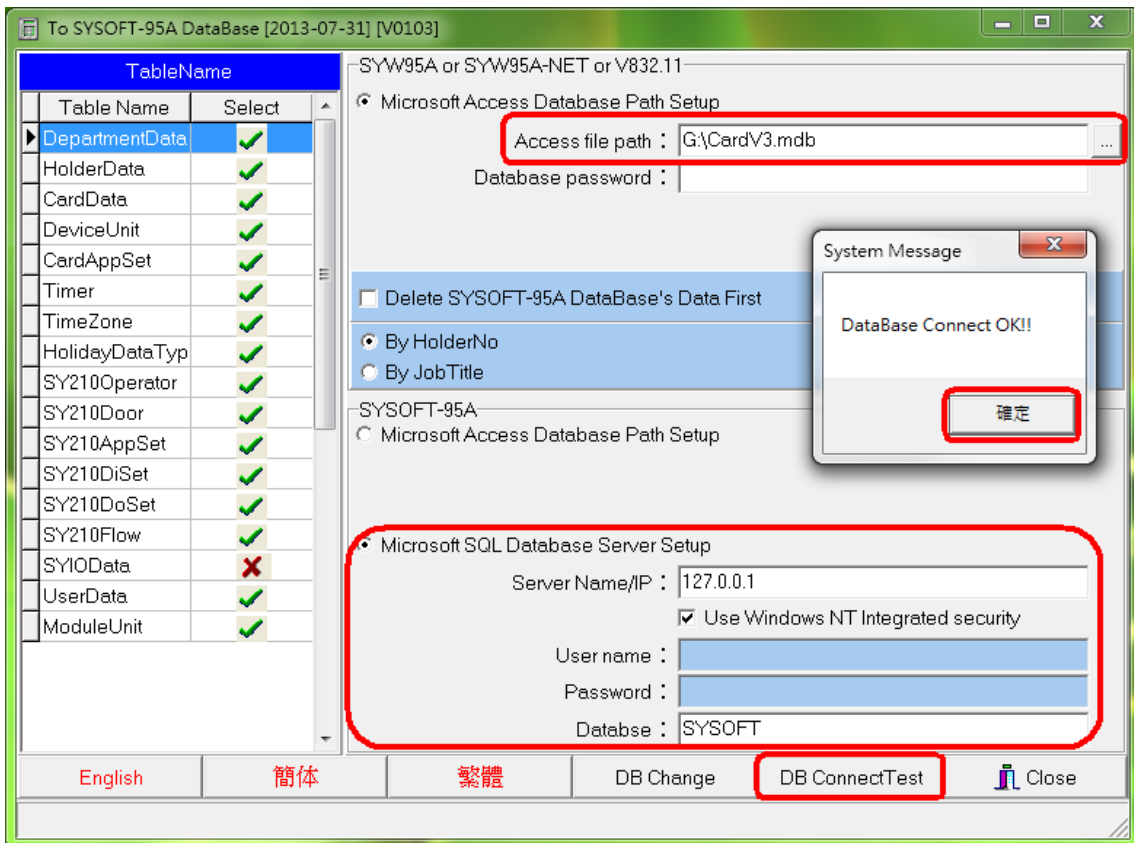
Press DB Connect Test before doing data migration.



Scenario B:
MS-Access to SQL Server



We can copy CardV3.mdb to any disk. The example is put db file to disk G.



Press DB Connect Test before doing data migration.

