

SY110SA Utility Users Manual

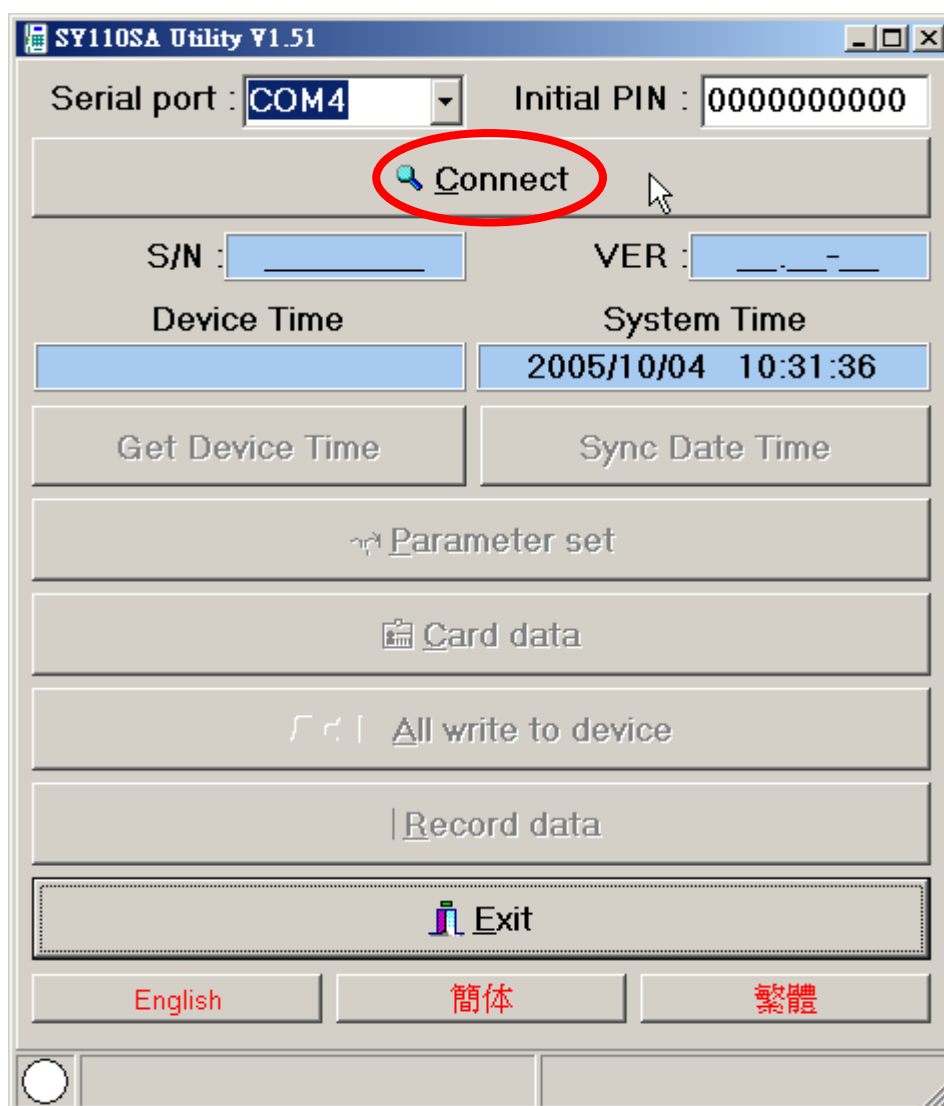
Version 1.50



© 2005 by SYRIS Technology Corp.

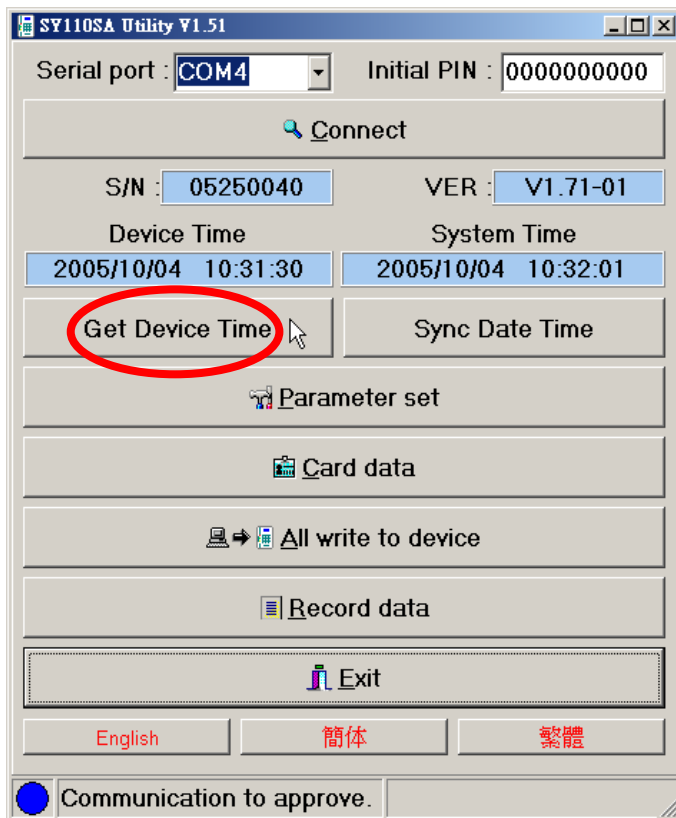
☞ SY110SA Connect

1. Activate utility of SY110SA, then click the button of **Connect**. The software will be on-line according to the port that was connected to SY110SA .
2. Input the initial password then click Connect
If the input is the same as **Initial PIN** of SY110SA, the state line will show **Communication to approve**. If the input is **NOT** the same as **Initial PIN** of SY110SA, the state line will show **Communication ok**.
3. If the state is shown "**Communication to approve**", the users can modify password that was initialed by hardware and manage parameter. If the state is shown "**Communication ok**", the users can't modify password or manage parameter.
4. **Communication Error** will be shown when the connection have not connected correctly with computer.



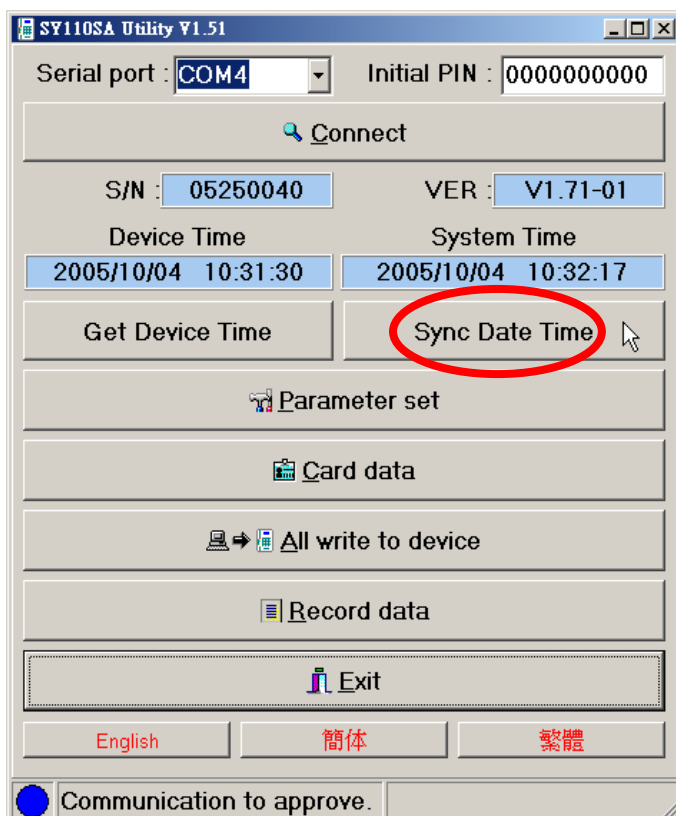
☞ Get Device Time:

The function can help you get the time of SY110SA immediately .



☞ Sync Date Time:

The function can help you keep your local computer up-to-date with the current time of SY110SA.



Parameter set

1. **Read from device:**The system will read the value of parameters that was checked above of the device .
 2. **Write to device:**
 - ◆ The system will set the value of parameters that was checked above to the device .
 - ◆ When the state of system is "Communication to approve", users can set the value of parameter to the device .
 3. **Read from file:**Read the file of device parameter value . (**Parameter data file**)
 4. **Write to file:**It will set the value of parameter into the file. (**Parameter data file**)
 5. **Clear screen data:**It will clean all data on screen.
 6. **Set the initial PIN:**
- If the state is "**Communication to approve**", you can modify password that was initialed by hardware.

Master parameter
 Card parameter
 Output parameter
 Input parameter
 Alarm parameter

1 Read from device

2 Write to device

3 Read from file

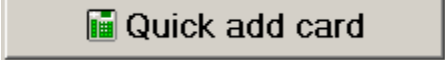
4 Write to file

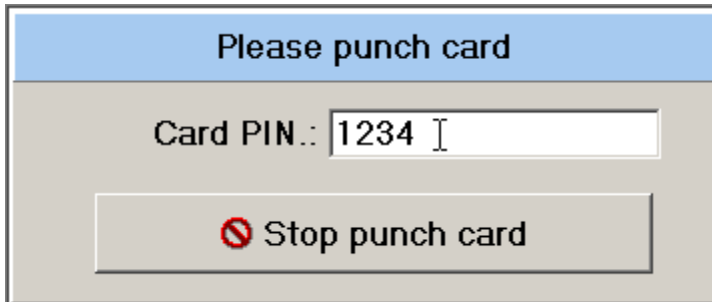
5 Clear screen data

6 Set initial PIN

Type	Name	Value
Master parameter	Master PIN #1	5678
Master parameter	Master PIN #2	
Master parameter	Master PIN #3	
Master parameter	Master card #1	0000000000
Master parameter	Master card #2	0000000000
Master parameter	Master card #3	0000000000
Card parameter	Pass mode	Card
Card parameter	Card Type	EM CARD
Card parameter	Card Bytes	3 Bytes
Output parameter	Open door relay	Inner Relay[Time(s)]
Output parameter	Door bell relay	External relay[Time(s)]
Output parameter	Alarm relay	None
Input parameter	Open door button #1	DI #1
Input parameter	Door sensor	DI #2
Input parameter	Door bell #2	Bell button

☞ Increase cards fast

1. Click  .
2. If the password of card was required, please enter the password to the field of **Card PIN**.



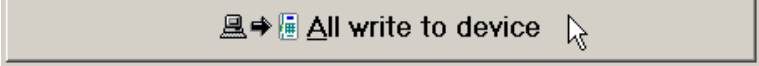
3. Punch card to SY110SA to add the card data.

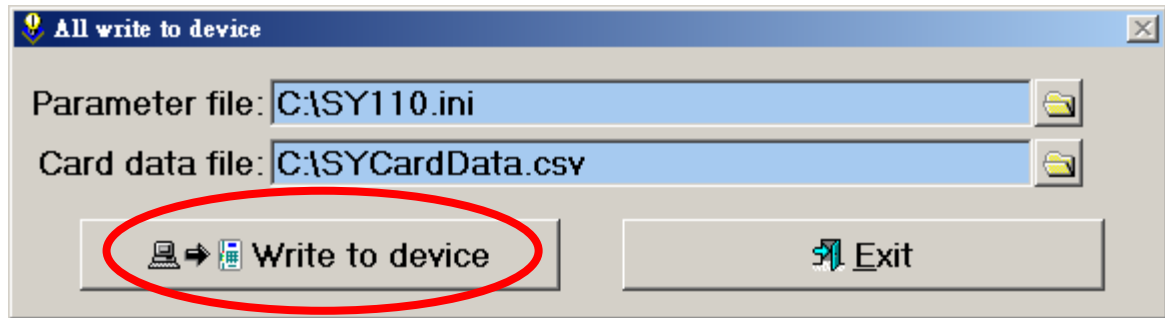
4. If the card was added, please click  .

5. Click  to transfer card data that were added to device.

☐ Write all data to device

It will refer to the saved files of parameter data file and card data file and write all data to SY110SA quickly.

1. Click  .
2. Set the path or file location of Parameter file and Card data file correctly.
3. Connect device of SY110SA to port of local computer and click **Write to device**.



4. Before clicking button of **All write to device**, you must enter correct password that is the same as initial password in SY110SA. It will allow you to set the value of management parameter setting to device.
5. System will **remove all data of cards in the device** before writing data to the device.

Record data

1. **Read from device :**
System will get the punch card record from device according to number of records.
2. **Print preview :** Preview the report of punch card record.
3. **Read from file:** Read the punch card data file. **(Card data file)**
4. **Write to file:** Save the punch card data to file. **(Card data file)**
5. **Clear screen data:** Clean all data on screen.

Record no. from:
 to:

1 Read from device

2 Print preview

3 Read from file

4 Write to file

5 Clear screen data

Record data [X]

Detailed View

Record no.	Card no.	Date/Time
▶ 0001	Open the door manually	2005/08/19 15:42:40
0002	0002	2005/08/19 16:07:38
0003	0010	2005/08/19 16:07:38
0004	0003	2005/08/19 16:07:30
0005	0004	2005/08/19 16:07:30
0006	0005	2005/08/19 16:07:28
0007	0006	2005/08/19 16:07:28
0008	0007	2005/08/19 16:07:26
0009	0008	2005/08/19 16:07:26
0010	0009	2005/08/19 16:07:24
0011	0008	2005/08/19 16:07:14
0012	0009	2005/08/19 16:07:12
0013	Open the door manually	2005/08/19 16:08:28
0014	Open the door manually	2005/08/19 16:08:24
0015	Open the door manually	2005/08/19 16:08:16
0016	Open the door manually	2005/08/19 16:22:54

Record no. from:
 to:

Read from device

Print preview

Read from file

Write to file

Clear screen data

View mode Communication to approve.

☞ The Language Setting

The system provides three kinds of language which are **English**、**Chinese (Simplified)**、**Chinese (Traditional)** to the software.

