

SY330NT -V5

Multi-Door Network Controller

(Build-in TCP/IP)

• Use LCD display reader can show card holder name.

► SY330NT-PV5 (PCB)



2 / 4	25,360	55,510
Wiegand	RS485	TCP/IP

▼ SY330NT-SV5 (LCM case)



ACCESS Controller
SYRIS Security System

■ Feature

- Stand alone or Networking system.
- Card capacity : 25,360.
- Entry/Exit record capacity : 55,510 circularly.
- Support to setup alarm system.
- Advanced programmable functions for different level within groups to maximize management control.
- Support multiple proximity, keypad, biometrics, smart card and RS485/ Wiegand reader.
- Versatile software features support wide range functions.
- Capability of connecting external backup power supply for emergency.
- Can be off-line use or on-line use.
- Externally programmable interface.
- Built-in Buzzer / Built-in Watchdog to prevent system from halting.
- Built-in Anti-Tamper trigger for protecting.
- Use LCD display reader can show card holder name. (English: 12 Char word or Chinese:6 Char word)

► Ordering Information

Item	Type
Standard	
■ SY330NT4-N-SV5	4 Door Network Controller (TCP/IP, LCM case, V5)
■ SY330NT4-N-PV5	4 Door Network Controller (TCP/IP, PCB, V5)
Custom Products	
■ SY330NT2-N-SV5	2 Door Network Controller (TCP/IP, LCM case, V5)
■ SY330NT2-N-PV5	2 Door Network Controller (TCP/IP, PCB, V5)

■ Specification

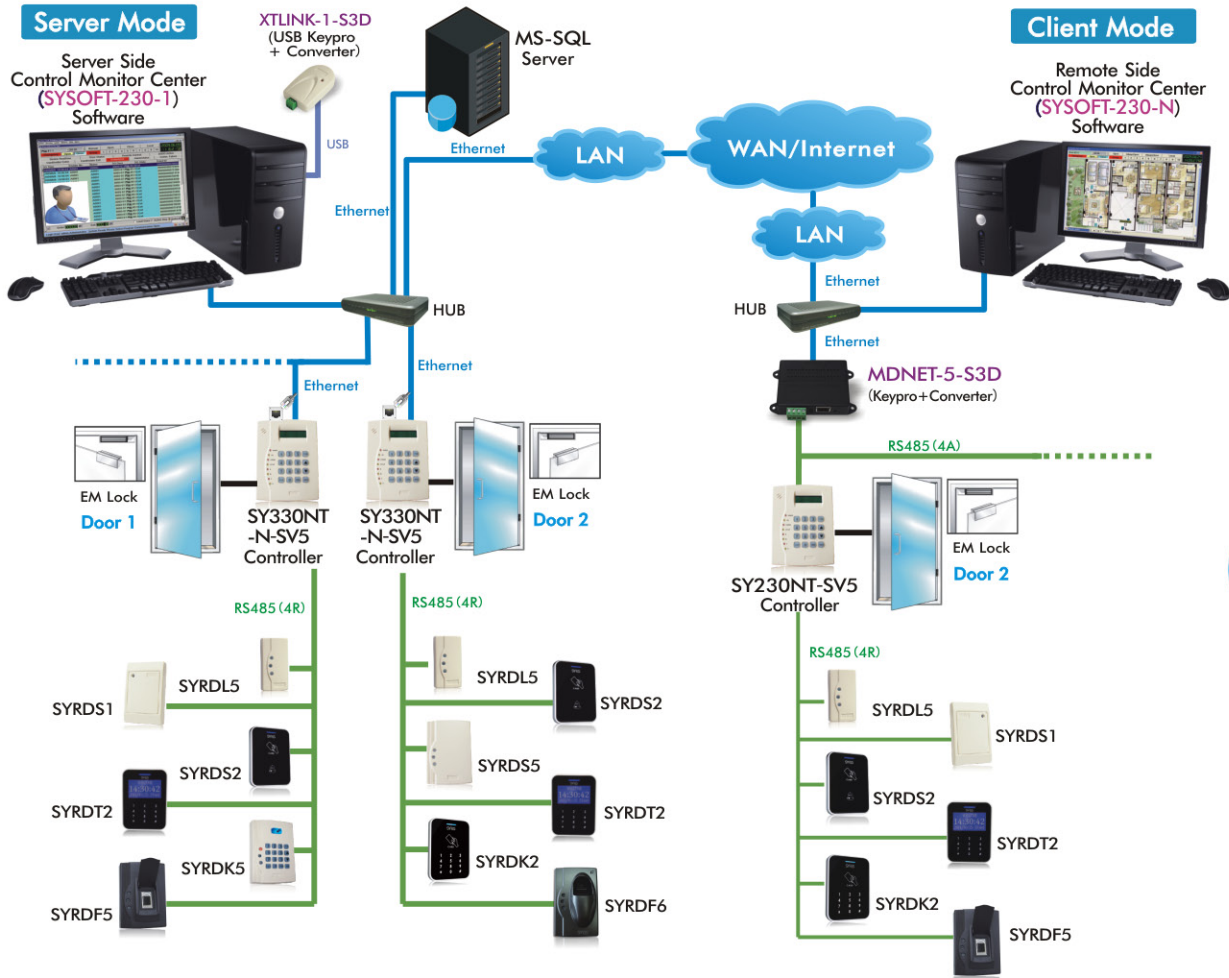
Item	SY330NT2		SY330NT4	
	- N -		- N -	
Specs	SV5	PV5	SV5	PV5
Door Control	2 Doors		4 Doors	
Number of Reader	4 (2 In / 2 Out)		8 (4 In/4 Out)	
Capacity of Records	55,510			
Number of Cards	25,360			
Communication	Wiegand x 2/4 , RS485 x 2 , TCP/IP			
Relay Output	2 Relays		4 Relays	
Input Points	Normally 4		Normally 8	
	DI 5~ DI 8 shared with W3~ W4, expandable to 128			
Wiegand Input Points	2		4	
	compatible with 26/32/34/35/37/42/50/66 bits			
Baud Rate	115,200 bps (4,800 ~ 230,400bps)			
Timer	32 Time			
Timer zone	60 Time Zone			
Group and APP Set / Holidays	64 Group / 366 Holidays			
Controller ID	0001~9999			
Anti-Passback	Up to 3 level of local control or group Anti-passback (through the site)			
LCD Display	16X2 Character / 8X2 Character (PCB)			
Keypad	16 Keys			
LED Indicator	5/8 LED			
Anti-Tamper	Built-in			
Beep Tone	Built-in Buzzer (Max 0.5W)			
Operating Temperature	-20°C ~ +70°C			
Storage Temperature	-40°C ~ +80°C			
Input Voltage	8V~24V DC / 0.5~2W			
Dimensions (WxHxD)	PCB	122.5 x 117 x 25mm		
	LCM case	137 x 180 x 54mm		

❖ This specification is preliminary and subject to change without prior notice.

SY330NT -V5

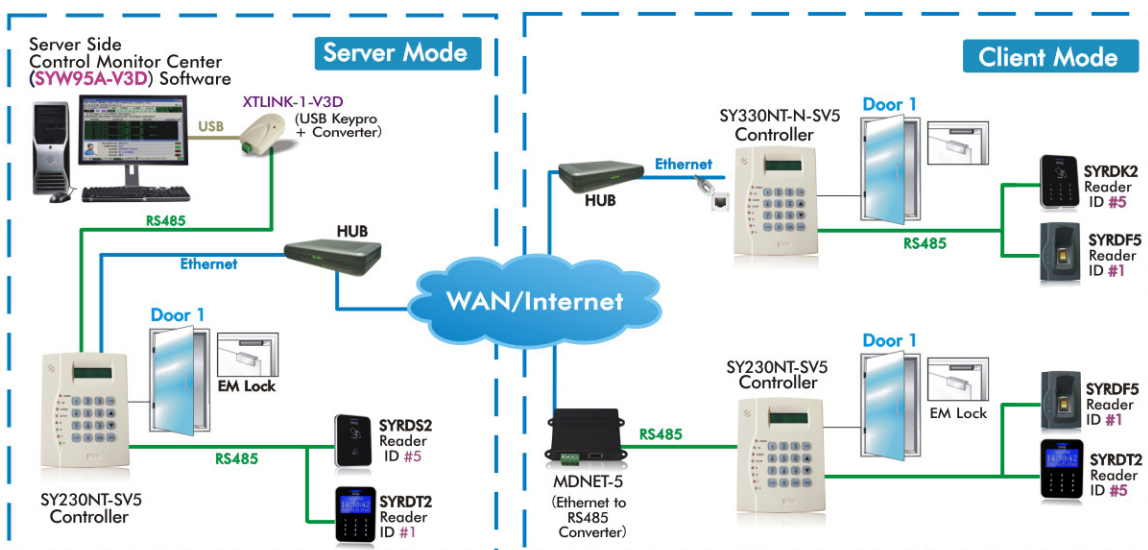
Multi-Door (Build-in TCP/IP) Network Controller

SYSOFT-230 Serial System Network Diagram



SYRIS
ACCESS Controller
SYRIS Security System

SYW95A Serial System Network Diagram



Copyright © 2013 SYRIS Technology Corp.